

 24 MIESIĄCE GWARANCJI
24 MONTHS WARRANTY
24 MONATE GARANTIE
ГАРАНТИЯ 24 МЕСЯЦА



PRODUCT CATALOGUE
TRAILERS





Human-friendly technology

table of contents

4	Single axle trailer	45	Transshipping trailer
7	Double axle trailer	48	Power push trailer
15	Three axle trailer	50	Biomass trailer
17	Tandem type trailer	51	Long transportation trailer
23	Monocoque trailer	52	Hook lift trailer
28	Dump trailer	55	Low-loading trailer
32	Manure spreader	57	Vehicle trailer
36	Bale transportation trailer	62	Feed mixer
42	Animal transportation trailer	66	Slurry tank

single axle trailer





- Single axle transfers weight on tractor and ensures better trailer manoeuvrability
- Hydraulic tipping cylinder secured to upper frame with ball bearing and seated in lower frame cradle.
- Frame with tarpaulin cover and operator platform providing protection against adverse atmospheric conditions (optional equipment)

Technical details

PRONAR T671:

Technically allowable total weight:	7400	[kg]
Allowable total weight:	6855	[kg]
Empty weight	1855	[kg]
Load capacity:	5000*	[kg]
Load volume:	8.2	[m ²]
Loading space:	8.2	[m ³]
Loading box inside length:	4010	[mm]
Loading box inside width:	conical: 2010/2060	[mm]
Dimensions: length/width/height:	5630/2240/2080	[mm]
Sidewall height:	500+500	[mm]
Sidewall height:	3/2	[mm]
Floor/wall thickness (mm) :	1045	[mm]
Platform height, measured from the ground:	1530	[mm]
Wheel track:	1045	[mm]
Suspension:	rigid	
Hitch-ring load:	1100	[kg]
Tires:	400/60-15.5	
Maximum speed:	30	[km/h]
Tipping system:	3-side	
Number of telescopic cylinder sections:	4	
Telescopic cylinder (piston stroke/oil requirement/working pressure)	1540/8L/200bar	
Minimum tractor power requirement:	36.4/26.7	[hp/kW]
Tipping angle (backwards/sides):	50/46	[°]



Technical details:	PRONAR T655	PRONAR 654	PRONAR 654/1	
Technically allowable total weight:	3500	4300	5500	[kg]
Allowable total weight:	2980	3780	4990	[kg]
Load capacity:	2000*	2500*	3500*	[kg]
Empty weight:	980	1280	1490	[kg]
Load volume:	1.6	2.5	6.2	[m ³]
Loading space:	4.1	6.2	6.2	[m ²]
Loading box inside length:	2910	3310	3310	[mm]
Loading box inside width:	1410	1860	1860	[mm]
Dimensions: length/width/height:	4425/1595/1270	4825/2045/1320	4825/2045/2060	[mm]
Sidewall height:	400	400	500+500	[mm]
Floor/wall thickness (mm) :	3/2	3/2	3/2	[mm]
Platform height, measured from the ground:	855	920	1020	[mm]
Wheel track:	1150	1500	1500	[mm]
Suspension:	rigid	rigid	rigid	
Hitch-ring load:	480	600	750	[kg]
Tires:	10,0/75-15,3	10/75-15,3	11,5/80-15,3	
Maximum speed:	30	40	30	[km/h]
Tipping system:	3-side	3-side	3-side	
Number of telescopic cylinder sections:	4	4	4	
Telescopic cylinder (piston stroke/oil requirement/working pressure)	1300mm/8L/160bar	1300mm/8L/160bar	1300mm/8L/160bar	
Minimum tractor power requirement:	20.8/15.3	26/19	31.2/23	[hp/kW]
Tipping angle (backwards/sides):	50/46	50/46	50/46	[°]

* technically allowable total weight with reduced speed to 30 km/h





double axle trailer

Technical details:	PRONAR T653	PRONAR 653/1*	PRONAR 653/2*	PRONAR 653/3*	
Allowable total weight:	5950	7105	8120	8380	[kg]
Load capacity	4000	5000	6000	6000	[kg]
Empty weight:	1950	2105	2120	2380	[kg]
Load volume:	4.1	8,2	8.2	8.2	[m ³]
Loading space:	8.2	8,2	8.2	8.2	[m ²]
Loading case inside length:	4010	4010	4010	4010	[mm]
Loading case inside width:	conical: 2010/2060	conical: 2010/2060	conical: 2010/2060	conical: 2010/2060	[mm]
Dimensions: length/width/height:	6140/2230/1585	6140/2230/2130	6140/2230/2170	6130/2190/2181	[mm]
Sidewall height:	500	500+500	500+500 (option)	500+500	[mm]
Floor/wall thickness (mm) :	3/2	4/2	4/2	4/2	[mm]
Platform height, measured from the ground:	1070	1120	1120	1145	[mm]
Wheel track:	1600	1600	1600	1640	[mm]
Suspension:	Leaf springs	parabolic springs	parabolic springs	parabolic springs	
Tires:	10.0/75-15.3	11.5/80-15.3	11.5/80-15.3	14,0/65-16	
Maximum speed:	30	30	30	40	[km/h]
Tipping system :	3-side	3-side	3-side	3-side	
Telescopic cylinder (piston stroke/ oil requirement/working pressure)	1300mm/8L/160bar	1300mm/8L/160bar	1300mm/8L/160bar	1300mm/8L/160bar	
Minimum tractor power requirement:	36.4/26.7	41.6/30.6	46.8/34.4	46.8/34.4	[hp/kW]
Tipping angle (backwards/sides):	42/46	42/46	42/46	42/46	[°]

* technical data for side walls and extensions 500+500mm



- Profiled sides with industrial durability guarantee long trailer use.
- Rigid, distortion resistant structure reinforced with longitudinal transverse profiles
- Rear couplings for second trailer and rear manual PRONAR hitch
- Precision ball bearing with pin protecting trailer tipping
- Watertight trailer body



24 24 MIESIĄCE GWARANCJI
24 MONTHS WARRANTY
24 MONATE GARANTIE
ГАРАНТИЯ 24 МЕСЯЦА

double axle trailer PRONAR T672 | T672/1 | T672/2



Technical details:

	PRONAR T672*	PRONAR T672/1**	PRONAR T672/2**	
Allowable total weight:	10990	13160	14000	[kg]
Load capacity:	8000	10000	10400	[kg]
Empty weight:	2990	3160	3600	[kg]
Load volume:	9.8	11.8	11.8	[m ³]
Loading space:	9.8	9.8	9.8	[m ²]
Loading case inside length:	4440	4440	4440	[mm]
Loading case inside width:	conical: 2190/2240	conical: 2190/2240	conical: 2190/2240	[mm]
Dimensions: length/width/height:	6455/2390/2243	6455/2390/2500	6455/2390/2580	[mm]
Sidewall height:	500+500	600+600 (option)	600+600 (option)	[mm]
Floor/wall thickness (mm) :	4/2	5/2.5	5/2.5	[mm]
Platform height, measured from the ground:	1215	1320	1345	[mm]
Wheel track:	1730	1700	1700	[mm]
Suspension:	parabolic springs	parabolic springs	parabolic springs	
Tires:	400/60-15.5	15.0/70-18	385/65 R22.5 RE	
Maximum speed:	40	30	40	[km/h]
Tipping system:	3-side	3-side	3-side	
Telescopic cylinder (piston stroke/ oil requirement/working pressure)	1700/13L/200bar	1700/13L/200bar	1700/13L/200bar	
Minimum tractor power requirement:	62.4/45.8	72.8/53.5	78/57.3	[hp/kW]
Tipping angle (backwards/sides):	50/46	50/46	50/46	[°]

* technical data for side walls and extensions 500+500mm

** technical data for side walls and extensions 600+600 mm

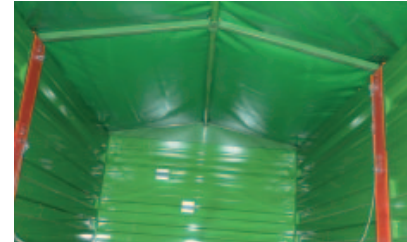
- Load box adapted to EUROPALET transport
- Spare wheel with securing bracket in standard equipment
- Crank handbrake
- High bodywork tightness
- Frame with tarpaulin cover and operator platform providing protection against adverse atmospheric conditions (optional equipment)



Technical details:
PRONAR T680

Allowable total weight:	18000	[kg]
Load capacity:	13100	[kg]
Empty weight:	4900	[kg]
Load volume:	17.2	[m ³]
Loading space:	12.3	[m ²]
Loading case inside length:	5100	[mm]
Loading case inside width:	2410*	[mm]
Length:	7500	[mm]
Width:	2550	[mm]
Height:	2800	[mm]
Sidewall height:	800+600	[mm]
Floor/wall thickness:	5/2.5	[mm]
Platform height, measured from the ground:	1390	[mm]
Wheel track:	1900	[mm]
Suspension:	parabolic springs	
Tires:	385/65 R22.5 RE	
Maximum speed:	40	[km/h]
Tipping system:	3-side	
Piston stroke:	1980	[mm]
Oil requirement:	18	[l]
Working pressure:	200	[bar]
Minimum tractor power requirement:	109.2/80.3	[hp/kW]
Tipping angle (backwards/sides):	47/47	[°]

* width adjusted to EUROPALLET transportation



- Wheel chocks+racks
- Loading case suitable for EUROPALLET transportation
- Rear couplings for second trailer and rear manual PRONAR hitch
- Precision ball bearing with pin protecting trailer tipping
- Watertight trailer body





- Portal door system (opening as gate)
- Resistant and water resistant plywood sides reducing risk of losses resulting from harmful atmospheric conditions
- Aluminium fittings with rubber seals enabling transport of e.g. oilseed rape
- Side and rear whole width pouring channel preventing the pouring of materials under trailer wheels
- Rolled cover with operator's platform



Technical details:	PRONAR T680P	
Allowable total weight:	18000	[kg]
Load capacity:	13160	[kg]
Empty weight:	4840	[kg]
Load volume:	19.5	[m ³]
Loading space:	12.7	[m ²]
Loading case inside length:	5250	[mm]
Loading case inside width:	2410*	[mm]
Length:	7270	[mm]
Width:	2550	[mm]
Height:	3250	[mm]
Sidewall height:	1540	[mm]
Sidewalls material:	waterproof plywood	[mm]
Floor/wall thickness:	5/18	[mm]
Platform height, measured from the ground:	1390	[mm]
Wheel track:	1900	[mm]
Suspension:	parabolic springs	
Tires:	385/65 R22.5 RE	
Maximum speed:	40	[km/h]
Tipping system:	3-side	
Piston stroke:	1980	[mm]
Oil requirement:	18	[l]
Working pressure:	200	[bar]
Minimum tractor power requirement:	109.2/80.3	[hp/kW]
Tipping angle (backwards/sides):	47/47	[°]

* width adjusted to EUROPALLET transportation



Technical details:

PRONAR T680H

Allowable total weight:	18000	[kg]
Load capacity:	12980	[kg]
Empty weight:	5020	[kg]
Load volume:	20.3	[m ³]
Loading space:	12.1	[m ³]
Loading case inside length:	5020	[mm]
Loading case inside width:	2420*	[mm]
Length:	7270	[mm]
Width:	2550	[mm]
Height:	3070	[mm]
Sidewall height:	800+900	[mm]
Floor/wall thickness (mm) :	5/2.5	[mm]
Platform height, measured from the ground:	1390	[mm]
Wheel track:	1900	[mm]
Suspension:	parabolic springs	
Tires:	385/65 R22.5 RE	
Maximum speed:	40	[km/h]
Tipping system :	3-side	
Piston stroke:	1980	[mm]
Oil requirement:	18	[l]
Working pressure:	200	[bar]
Minimum tractor power requirement:	109.2/80.3	[hp/kW]
Tipping angle (backwards/sides):	47/47	[°]

* width adjusted to EUROPALET transportation



- High bodywork tightness
- Hydraulically opening side wall
- Load box adapted to EUROPALET transport
- Ball bearing facilitating tipping the load box to the rear and to the sides



24 24 MIESIĄCE GWARANCJI
24 MONTHS WARRANTY
24 MONATE GARANTIE
ГАРАНТИЯ 24 МЕСЯЦА

double axle trailer

PRONAR T680U



Technical details:

	PRONAR T680U	
Allowable total weight (technical):	20000	[kg]
Allowable total weight:	18000	[kg]
Load capacity:	13030	[kg]
Empty weight:	4970	[kg]
Load volume:	17,2	[m ³]
Loading space:	12,3	[m ²]
Loading case inside length:	5100	[mm]
Loading case inside width:	2410*	[mm]
Length/Width/Height:	7500/2550/3100	[mm]
Sidewall height:	800+600	[mm]
Floor/wall thickness:	5/2,5	[mm]
Platform height, measured from the ground:	1390	[mm]
Wheel track:	1900	[mm]
Suspension:	parabolic springs	
Tires:	385/65 R22,5 RE	
Maximum speed:	40	[km/h]
Tipping system:	3-side	
Telescopic cylinder (piston stroke/ oil requirement/working pressure):	1980/18L/200bar	
Minimum tractor power requirement:	109,2/80,3	[hp/kW]
Tipping angle (backwards/sides):	47/47	[°]

* width adjusted to EUROPALLET transportation





Technical details:	PRONAR PT606*	PRONAR PT608*	PRONAR PT610**	PRONAR PT612***	
Allowable total weight:	8900	11600	14200	16300	[kg]
Load capacity:	6000	8460	10290*	12000	[kg]
Empty weight:	2900	3140	3910*	4200	[kg]
Load volume:	10.1	11	13.2	15.4	[m ³]
Loading space:	10.1	11	11	11	[m ²]
Loading case inside length:	4190	4545	4545	4545	[mm]
Loading case inside width ****	2420	2420	2420	2420	[mm]
Dimensions: length/width/height:	6390/2550/2200	6720/2550/2300	6720/2550/2520	6720/2550/2720	[mm]
Sidewall height:	500+500 (option)	500+500 (option)	600+600 (option)	600+800 (option)	[mm]
Floor/wall thickness (mm) :	4/2	4/2	5/2.5	5/2.5	[mm]
Platform height, measured from the ground:	1160	1220	1270	1270	[mm]
Wheel track:	1900	1900	1900	1900	[mm]
Suspension:	parabolic springs	parabolic springs	parabolic springs	parabolic springs	
Tires:	14.0/65-16	14.0/65-16	385/65 R22.5 RE	385/65 R22.5 RE	
Maximum speed:	40	40	40	40	[km/h]
Tipping system :	3-side	3-side	3-side	3-side	
Cargo grips (on the floor):	8				[pcs]
Telescopic cylinder (piston stroke/ oil requirement/working pressure)	1540mm/8L/200bar	1700mm/13L/200bar	1700/13L/200bar	1980/18L/200bar	
Minimum tractor power requirement:	46.8/34.4	62.4/45.8	78/57.3	89/65.7	[hp/kW]
Tipping angle (backwards/sides):	50/46	50/46	50/46	50/46	[°]

* technical data for side walls and extensions 500+500mm
 ** technical data for side walls and extensions 600+600 mm
 *** technical data for side walls and extensions 600+800 mm
 **** width adjusted to EUROPALLET transportation



three axle trailer





PRONAR T780

three axle trailer

24 24 MIESIACE GWARANCJI
 24 MONTHS WARRANTY
 24 MONATE GARANTIE
 ГАРАНТИЯ 24 МЕСЯЦА

Technical details:

PRONAR T780

Allowable total weight:	24000	[kg]
Empty weight:	7700	[kg]
Loading capacity:	16300	[kg]
Load volume:	26	[m ³]
Loading space:	18,55	[m ²]
Loading case inside length:	7696	[mm]
Loading case inside width:	2410*	[mm]
Length/Width/Height	10087/2548/ 2800	[mm]
Sidewall height:	800+600	[mm]
Floor/wall thickness	5/2.5	[mm]
Platform height, measured from the ground:	1390	[mm]
Wheel track:	1900	[mm]
Suspension:	parabolic springs	
Tires:	385/65 R22.5 RE	
Maximum speed:	40	[km/h]
Tipping system :	3-side	
No. of telescopic servo-motor:	2	
Number of telescopic cylinder sections:	5	
Piston stroke:	2990	[mm]
Oil requirement:	68	[l]
Working pressure:	200	[bar]
Minimum tractor power requirement:	150/110.2	[hp/kW]
Tipping angle (backwards/sides):	47/45	[°]



* width adjusted to EUROPALLET transportation





tandem type trailer

Technical details:	PRONAR T663/1	PRONAR T663/2	PRONAR T663/3	PRONAR T663/4	
Allowable total weight (construction):	14000	11000	14000	14000	[kg]
Allowable total weight:	13290	9700*	13660	14000	[kg]
Load capacity:	10000	7000**	10000	10420	[kg]
Empty weight:	3290	2700***	3660	3580	[kg]
Load volume:	11,8	9,8	11,8	11,8	[m ³]
Loading space:	9,8	9,8	9,8	9,8	[m ²]
Loading case inside length:	4440	4440	4440	4440	[mm]
Loading case inside width:	trapezoid: 2190/2240	trapez: 2190/2240	trapez: 2190/2240	trapez: 2190/2240	[mm]
Overall dimensions (length/width/height):	6116/2390/2484	6121/2390/2094	6154/2390/2579	6230/2390/2445	[mm]
Sidewall height:	600+600	500+500	600+600	600+600	[mm]
Floor/wall thickness (mm) :	5/2,5	4/2	5/2,5	5/2,5	[mm]
Platform height, measured from the ground:	1250	1060	1320	1185	[mm]
Wheel track:	1700	1650	1700	1800	[mm]
Suspension:	Leaf springs	parabolic springs	Leaf springs	parabolic springs	
Hitch-ring load:	1860	1465	1880	2000	[kg]
Tires:	15,0/70-18	11,5/80-15,3	385/65 R22,5 (15R22,5) RE	15,0/70-18	
Maximum speed:	30	30	40	30	[km/h]
Tipping system :	3-side	3-side	3-side	3-side	
Telescopic cylinder (stroke / oil demand / pressure)	1700mm/13L/200bar	1700mm/13L/200bar	1700mm/13L/200bar	1830mm/15L/200bar	
Minimum tractor power requirement:	67,6/49,7	57,2/42	72,8/53,5	67,6/49,7	[hp/kW]
Tipping angle (backwards/sides):	50/46	50/46	50/46	50/45	[°]

- Sides tipping sideways and downwards
- Rigid distortion resistant structure
- Hydraulic system and platform adapted to tip in three directions
- Central bolting at floor edges
- Ergonomic upper catches of sides and side wall extensions

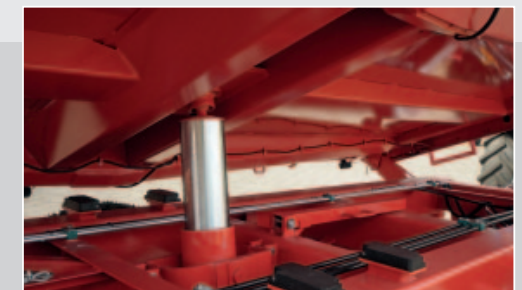


* total allowable weight in other specification than standard
 ** homologated load volume dependant on specification and optional equipment
 *** empty weight differs depending on optional equipment





- Design load capacity 15.7 t
- Exceptionally high design speed – 40km/h
- Frame with tarpaulin cover and operator platform providing protection against adverse atmospheric conditions (optional equipment)



Technical details:

	PRONAR T683	
Allowable total weight (construction):	20000	[kg]
Allowable total weight:	20000*	[kg]
Load capacity:	15300**	[kg]
Empty weight:	4700	[kg]
Load volume:	17,3	[m ³]
Loading space:	12,3	[m ³]
Loading case inside length:	5100	[mm]
Loading case inside width:	2420***	[mm]
Overall dimensions (length/width/height):	6800/2550/2790	[mm]
Sidewall height:	800+600	[mm]
Floor/wall thickness (mm) :	5/2,5	[mm]
Platform height, measured from the ground:	1350	[mm]
Wheel track:	1960	[mm]
Suspension:	parabolic springs	
Hitch-ring load:	2000	[kg]
Tires:	385/65 R22,5 Regenerated	
Maximum speed:	40	[km/h]
Tipping system :	3-side	
Telescopic cylinder (stroke/oil demand/pressure):	1980/18L/200bar	
Minimum tractor power requirement:	104/76,4	[hp/kW]
Tipping angle (backwards/sides):	50/46	[°]

* allowable total weight may differ depending on local regulations
 ** the value may differ dependant on local regulations and equipment
 *** width adjusted to EUROPALLET transportation

Technical details:	PRONAR T683U	PRONAR T683P	
Allowable total weight (construction):	20000	20000	[kg]
Allowable total weight:	20000*	20000*	[kg]
Load capacity:	15230**	15360**	[kg]
Empty weight:	4770	4640	[kg]
Load volume:	17,3	17,2	[m ³]
Loading space:	12,3	12,3	[m ²]
Loading case inside length:	5100	5100	[mm]
Loading case inside width:	2420***	2420***	[mm]
Overall dimensions (length/width/height):	6800/2550/2790	6800/2550/2790	[mm]
Sidewall height:	800+600	800+600	[mm]
Floor/wall thickness (mm) :	5/2,5	5/2,5	[mm]
Platform height, measured from the ground:	1350	1350	[mm]
Wheel track:	1960	1960	[mm]
Suspension:	parabolic springs	parabolic springs	
Hitch-ring load:	2000	2000	[kg]
Tires:	385/65 R22,5 RE	385/65 R22,5 RE	
Maximum speed:	40	40	[km/h]
Tipping system :	3-side	3-side	
Telescopic cylinder (stroke / oil demand / pressure):	1980 mm/18 L/200 bar	1980 mm/18 L/200 bar	
Minimum tractor power requirement:	104/76,4	104/76,4	[hp/kW]
Tipping angle (backwards/sides):	50/46	50/46	[°]



* allowable total weight may differ depending on local regulations
 ** the value may differ dependant on local regulations and equipment
 *** width adjusted to EUROPALLET transportation





Technical details:

	PRONAR T683H	
Allowable total weight (construction):	20000	[kg]
Allowable total weight:	20000*	[kg]
Load capacity:	15180**	[kg]
Empty weight:	4820	[kg]
Load volume:	20,3	[m ³]
Loading space:	12,1	[m ²]
Loading case inside length:	5020	[mm]
Loading case inside width:	2420***	[mm]
Overall dimensions (length/width/height):	7270/2550/3070	[mm]
Sidewall height:	800+900	[mm]
Floor/wall thickness (mm) :	5/2,5	[mm]
Platform height, measured from the ground:	1350	[mm]
Wheel track:	1960	[mm]
Suspension:	Leaf springs	
Hitch-ring load:	2000	[kg]
Tires:	385/65 R22,5 RE	
Maximum speed:	40	[km/h]
Tipping system :	3-side	
Telescopic cylinder (stroke / oil demand / pressure)	1980 mm/18 L/200 bar	
Minimum tractor power requirement:	104/76,4	[hp/kW]
Tipping angle (backwards/sides):	47/47	[°]

* allowable total weight may differ depending on local regulations
 ** the value may differ dependant on local regulations and equipment
 *** width adjusted to EUROPALLET transportation

Technical details:	PRONAR T510	PRONAR T512	
Allowable total weight (construction):	15000	17000	[kg]
Allowable total weight:	14200	16260	[kg]
Load capacity:	10150	12000	[kg]
Empty weight:	4050	4260	[kg]
Load volume:	13,2	15,4	[m ³]
Loading space:	11	11	[m ²]
Loading case inside length:	4545	4545	[mm]
Loading case inside width:	2420*	2420*	[mm]
Overall dimensions (length/width/height):	6139/2550/2452	6139/2550/2652	[mm]
Sidewall height:	600+600	600+800	[mm]
Floor/wall thickness (mm) :	5/2,5	5/2,5	[mm]
Platform height, measured from the ground:	1250	1252	[mm]
Wheel track:	1900	1900	[mm]
Suspension:	parabolic springs	parabolic springs	
Hitch-ring load:	1700	1950	[kg]
Tires:	385/65 R22,5 RE	385/65 R22,5 RE	
Maximum speed:	40	40	[km/h]
Tipping system :	3-side	3-side	
Telescopic cylinder (stroke / oil demand / pressure):	1700mm/15L/200bar	1700mm/16L/200bar	
Minimum tractor power requirement:	74/54,4	84/61,7	[hp/kW]
Tipping angle (backwards/sides):	50/46	50/46	[°]



* width adjusted to EUROPALLET transportation



monocoque trailer



Technical details:	PRONAR T679	
Allowable total weight:	16000	[kg]
Load capacity	12000	[kg]
Empty weight:	4000	[kg]
Load volume with extensions height 580mm/ without extensions:	15.8 / 10.3	[m ³]
Loading space:	10	[m ²]
Loading case inside length:	4500	[mm]
Loading case inside width:	trapezoid: 2200/2250	[mm]
Dimensions: length/width/height:	6259/2550/2866	[mm]
Sidewall height:	1000+580	[mm]
Floor/wall thickness (mm) :	5/4	[mm]
Platform height, measured from the ground:	1240	[mm]
Wheel track:	1860	[mm]
Suspension:	parabolic springs	
Hitch-ring load:	1950	[kg]
Tires:	385/65 R22.5 RE	
Maximum speed:	40	[km/h]
Tipping system:	1-side	
Telescopic cylinder (piston stroke/oil requirement/working pressure):	1980mm/18L/200bar	
Minimum tractor power requirement:	83.2/61	[hp/kW]
Tipping angle (backwards):	50	[°]



- Slide panel opening for grain in rear side
- Design speed of 40km/h
- Frame with tarpaulin cover to side tops (mounted optionally)





Technical details:	PRONAR T669	PRONAR T669/1	
Allowable total weight (technically):	21000	21000	[kg]
Allowable total weight:	20000	20000	[kg]
Load capacity	14320	14000	[kg]
Empty weight:	5680	6000	[kg]
Load volume with Extensions height 580mm / without extensions:	22.7 / 15	22.7 / 15	[m ³]
Loading space:	12.4	12,4	[m ²]
Loading case inside length:	5500	5500	[mm]
Loading case inside width:	trapezoid: 2200/2250	trapezoid: 2200/2250	[mm]
Dimensions: length/width/height:	7255/2550/3160	7255/2550/3160	[mm]
Sidewall height:	1200+580	1200+580	[mm]
Floor/wall thickness (mm):	5/4	5/4	[mm]
Platform height, measured from the ground:	1435	1435	[mm]
Wheel track:	1960	1960	[mm]
Suspension:	parabolic springs	parabolic springs	
Hitch-ring load:	2000	2000	[kg]
Tires:	385/65 R22.5 RE	385/65 R22,5 RE	
Maximum speed:	40	40	[km/h]
Tipping system:	1-side	2-side	
Telescopic cylinder (piston stroke/ oil requirement/working pressure):	2400mm/29L/200bar	2400mm/29L/200bar	
Minimum tractor power requirement:	104/76,4	104/76.4	[hp/kW]
Tipping angle (backwards):	50	50/45	[°]

Technical details:	PRONAR T682	PRONAR T682/1	
Allowable total weight (technically):	33000	33000	[kg]
Allowable total weight:	30000	33000	[kg]
Load capacity:	21000	24000	
Empty weight:	9000	9000	[kg]
Load volume without extensions:	22	22	[m ³]
Load volume with extensions 580mm (option):	32 option	32 option	[m ³]
Loading space:	17,8	17,8	[m ²]
Loading case inside length:	8000	8000	[mm]
Loading case inside width:	trapezoid: 2200/2250	trapezoid: 2200/2250	[mm]
Dimensions: length/width/height:	9900/2550/3330	9900/2550/3330	[mm]
Sidewall height:	1200	1200	[mm]
Floor/wall thickness (mm) :	5/4	5/4	[mm]
Platform height, measured from the ground:	1495	1495	[mm]
Wheel track:	2100	2100	[mm]
Suspension:	parabolic springs	parabolic springs	
Hitch-ring load:	3000	3000	[kg]
Tires:	385/65 R22.5 RE	385/65 R22.5 RE	
Maximum speed:	40	40	[km/h]
Tipping system:	1-side	1-side	
Hydraulic supply:	seperate tank, pump	seperate tank, pump	
Telescopic cylinder (piston stroke/ oil requirement/working pressure):	2990mm/72L/200bar	2990mm/72L/200bar	
Minimum tractor power requirement:	182/133.8	182/133.8	[hp/kW]
Tipping angle (backwards):	50	50	[°]



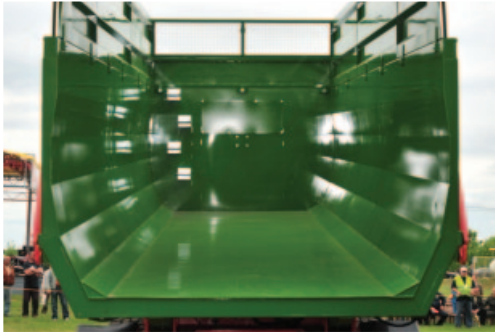
- Maximum design gross weight 33 000kg
- Drawbar with shock absorber leaf spring with height adjustment
- Triple axle suspension type on parabolic leaf springs with ADR torsion mechanism
- Load box raised backwards with the aid of two powerful hydraulic cylinders





monocoque trailer

PRONAR T700 | T700M



- Maximum design gross weight 24 000kg
- 34m³ load volume
- Hydraulic straight drawbar support as standard



Technical details:	PRONAR T700*	PRONAR T700M**	
Allowable total weight (technically)	24000	24000	[kg]
Allowable total weight:	21000	23000	[kg]
Load capacity	14430	16040	[kg]
Empty weight:	6570	6960	[kg]
Load volume with extensions -additional equipment /without extensions-standard equipment	34.3 option / 23	35 / 23	[m ³]
Loading space:	14.7	14,7	[m ³]
Loading case inside length:	6694	6694	[mm]
Loading case inside width:	2180/2240	2242/2302	[mm]
Dimensions: length/width/height:	8500/2550/3900	8500/2550/3750	[mm]
Sidewall height:	1500+830 (option)	1500+830	[mm]
Floor/wall thickness (mm):	4/4	4/4	[mm]
Platform height, measured from the ground:	1475	1325	[mm]
Wheel track:	2000	2100	[mm]
Suspension:	parabolic springs	parabolic springs	
Hitch-ring load:	3000	3000	[kg]
Tires:	550/60-22.5	550/60-22.5	
Maximum speed:	40	40	
Tipping system:	1-side	1-side	[km/h]
Telescopic cylinder (piston stroke/ oil requirement/working pressure)	2990mm/40L/200bar	2990mm/40L/200bar	
Minimum tractor power requirement:	124.8/91.7	124.8/91.7	[hp/kW]
Tipping angle (backwards):	55	55	[°]

* technical data for side walls and extensions (1500+830)

** technical data for side walls and extensions (1500+800)



dump trailer





- Long-lasting frame profile
- Maximum design gross weight 24000 kg
- Increased box tipping angle 60°



Technical details:

PRONAR T701

Allowable total weight (technically):	24000	[kg]
Allowable total weight:	21000	[kg]
Load capacity:	14840	[kg]
Empty weight:	6160	[kg]
Load volume:	10,44	[m³]
Loading space:	13,5	[m³]
Loading case inside length (upper/bottom side):	5600	[mm]
Loading case inside width:	2410	[mm]
Dimensions: Length /Width/Height:	7360/2550/2330	[mm]
Sidewall height:	800	[mm]
Floor/wall thickness (mm) :	10/8	[mm]
Platform height, measured from the ground:	1475	[mm]
Wheel track:	2060	[mm]
Suspension:	parabolic springs	
Hitch-ring load:	3000	[kg]
Tires:	385/65 R22.5 RE	
Maximum speed:	40	[km/h]
Tipping system:	2 telescopic cylinders, 1-side tipping	
Telescopic cylinder (piston stroke/ oil requirement/working pressure)	1980mm/36L/200bar	
Piston stroke:	1980	[mm]
Oil requirement:	36	[l]
Working pressure:	200	[bar]
Minimum tractor power requirement:	124.8/91.7	[hp/kW]
Tipping angle (backwards):	60	[°]



Technical details:

PRONAR T679/2

Allowable total weight:	16350	[kg]
Load capacity:	12000	[kg]
Empty weight:	4350	[kg]
Load volume:	7.7	[m ³]
Loading space:	10.9	[m ²]
Loading case inside length (upper/bottom side):	4625/4500	[mm]
Loading case inside width:	2410	[mm]
Dimensions: Length /Width/Height:	6230/2546/2080	[mm]
Sidewall height:	700	[mm]
Floor/wall thickness (mm):	10/8	[mm]
Platform height, measured from the ground:	1240	[mm]
Wheel track:	1860	[mm]
Suspension:	parabolic springs	[mm]
Hitch-ring load:	2000	[kg]
Tires:	385/65 R22.5 RE	
Maximum speed:	40	[km/h]
Tipping system:	1-side	
Telescopic cylinder (piston stroke/ oil requirement/working pressure):	2150mm/28L/200bar	
Minimum tractor power requirement:	83.2/61	[hp/kW]
Tipping angle (backwards):	55	[°]
Oil requirement:	36	[l]
Working pressure:	200	[bar]
Minimum tractor power requirement:	124.8/91.7	[hp/kW]
Tipping angle (backwards):	60	[°]



- Extraordinarily resistant box, due to the application of HARDOX materials.
- Reliable and wear resistant wheel axles and brakes
- Possibility of equipping with wide profile tyre
- Parabolic springs





T679/2 PRONAR



manure spreader





Technical details:	PRONAR N262	PRONAR N262/1	
Permissible total weight:	18660	21200*	[kg]
Loading capacity:	12000	14000*	[kg]
Empty weight:	6660	7200**	[kg]
Load volume:	11.3	14	[m ³]
Loading space:	8.9	11,1	[m ²]
Internal length of Loading space:	4500	5600	[mm]
Internal width of Loading space:	trapez: 1955/1995	trapezoid: 1955/1995	[mm]
Length:	8000	9000	[mm]
Width:	2510	2550	[mm]
Height:	3740***	3740***	[mm]
Sidewall height:	1265****	1265****	[mm]
Floor/wall thickness (mm) :	4/3	4/3	[mm]
Platform height, measured from the ground:	1530	1530	[mm]
Wheel track:	1900	1940	[mm]
Suspension:	parabolic springs	parabolic springs	
Hitch-ring load:	2200	2200	
Tires:	550/60-22.5	600/50-22.5	[kg]
Construction speed:	40	40	
PTO range:	1000	1000	[km/h]
Minimum tractor power requirement / adaptor type:	127.3/93.6	127.3/93.6	[rpm]
Adapter type / max spreading width:	AH20/25	AH20/25	[hp/kW]
Minimum tractor power requirement:	182/133.8	147.4/108.3	[-/m]

* designed technical specification and homologated specification can differ

** empty weight differs depending on optional equipment

*** high with protective netting

**** with protective wooden batten





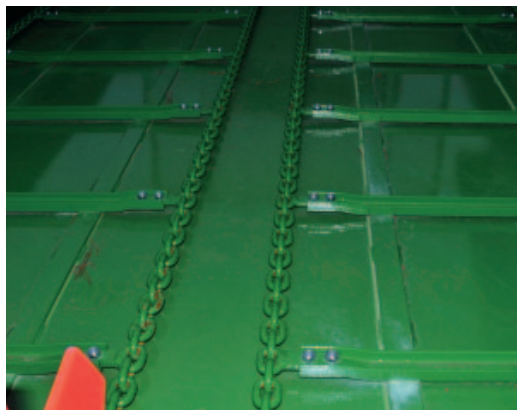
PRONAR N161

manure spreader

Technical details:

PRONAR N161

Permissible total weight:	8200	[kg]
Loading capacity:	6000	[kg]
Empty weight:	2200	[kg]
Load volume:	4.1	[m ³]
Loading space:	7.6	[m ²]
Internal length of Loading space:	4000	[mm]
Internal width of Loading space:	1900	[mm]
Length:	5780	[mm]
Width:	2230	[mm]
Height:	2750	[mm]
Sidewall height:	600	[mm]
Floor/wall thickness (mm) :	3/2,5	[mm]
Platform height, measured from the ground:	1150	[mm]
Wheel track:	1660	[mm]
Suspension:	Single axle, rigid	
Hitch-ring load:	1500	[kg]
Tires:	500/50-17	
Construction speed:	25	[km/h]
PTO range:	68/50	[hp/kW]
Minimum tractor power requirement/adaptor type:	540	[rpm]
Adapter type / max spreading width:	AH21 / 2.4	[- /m]



- Horizontal adapter with 2 beaters





Technical details:	PRONAR N162/1	PRONAR N162/2	
Permissible total weight:	13000	15100	[kg]
Loading capacity:	from 7580 to 8400*	from 9540 to 10140*	[kg]
Empty weight:	from 4600 to 5420**	from 4960 to 5560**	[kg]
Load volume:	9	9	[m ³]
Loading space:	8,5	8,5	[m ²]
Internal length of Loading space:	4400	4400	[mm]
Internal width of Loading space:	1930	1930	[mm]
Length/Width/Height	7420/2510/3430***	7455/2440/3285***	[mm]
Sidewall height:	1040****	1040****	[mm]
Floor/wall thickness:	3/3	3/3	[mm]
Platform height, measured from the ground:	1460	1315	[mm]
Wheel track:	1900	1820	[mm]
Suspension:	tandem - parabolic springs	tandem - parabolic springs	
Hitch-ring load:	2000	2100	[kg]
Tires:	600/50-22,5	500/50-17	
Construction speed:	25	25	[km/h]
Minimum tractor power requirement	85/62,5 with AV40	105/77,2 with AV40	[-/m]
/ adaptor type:	95/69,8 with AV20	115/84,6 with AV20	[-/m]
PTO range:	1000	1000	[rpm]
Adapter type / max spreading width:	AV40/6 AV20/12	AV40/6 AV20/12	[-/m]

- * designed technical specification and homologated specification can differ
- ** empty weight differs depending on optional equipment
- *** high with protective netting
- **** with protective wooden batten





bale transportation trailer

24 24 MIESIACE GWARANCJI
24 MONTHS WARRANTY
24 MONATE GARANTIE
ГАРАНТИЯ 24 МЕСЯЦА

bale transportation trailer

PRONAR TB4



Technical details:

PRONAR TB4		
Allowable total weight:	10500	[kg]
Loading capacity:	7000	[kg]
Empty weight:	3500	[kg]
Load volume:	17,5	[m ³]
Volume:	12 beles of dimensions 1200x1200	[mm]
Loading platform length:	6910	[mm]
Loading platform width:	2550	[mm]
Dimensions: length/width/height:	8940/2720/1980	[mm]
Loading platform height:	1060	[mm]
Floor thickness:	4	[mm]
Platform height, measured from the ground:	930	[mm]
Wheel track:	1900	[mm]
Suspension:	parabolic springs	
Hitch-ring load:	1350	[kg]
Tires:	400/60-15,5	
Maximum speed:	30	[km/h]
Minimum tractor power requirement:	100/73	[KM/kW]



Technical details:	PRONAR T022M	PRONAR T025M	PRONAR T024M	PRONAR T023M	PRONAR T026M	
Allowable total weight (constructional):	11000	13000	13000	16000	19000	[kg]
Allowable total weight:	10000	12000	12000	15000	18000	[kg]
Loading capacity:	7360	9040	8700	11300	13720	[kg]
Empty weight:	2640	2960	3300	3700	4280	[kg]
Loading space:	16.4 (17.7*)	16.4 (17.7*)	17,4	24 (26.2*)	24 (26.2*)	[m ²]
Loading platform length:	6495	6495	7170	9695	9695	[mm]
Loading space length:	6740 (7270*)	6740 (7270*)	-	9880 (10770*)	9880 (10770*)	[mm]
Loading platform width:	2517/2410**	2517/2410**	2517/2410**	2517/2410**	2517/2410**	[mm]
Dimensions: length /width/height:	9135***/2550/2830	9135*** /2550/2860	9290/2550/2740	11995***/2550/2830	11995***/2550/2860	[mm]
Loading platform height:	1680	1680	1680	1680	1680	[mm]
Floor thickness:	4	4	4	4	4	[mm]
Platform height, measured from the ground:	1150	1180	1060	1150	1180	[mm]
Wheel track:	1730	1820	1820	1730	1820	[mm]
Suspension:	parabolic springs	parabolic springs	tandem - parabolic springs	parabolic springs	parabolic springs	
Tires:	400/60-15,5	500/50-17	15,0/70-18	400/60-15,5	500/50-17	
Maximum speed:	40	40	40	40	40	[km/h]
Minimum tractor power requirement:	67,6/49,7	72,8/53,5	62,5/45,9	83,2/61	93,6/68,8	[hp/kW]

* with pulled out rear frame extending the platform length
 ** EURO pallets transportation width
 *** standard platform length

- 4 mm thick floor, highly resistant to deformation
- loading platform with raised edges protecting the cargo from slipping
- holes used for fastening belts on side ladders and sides of the loading platform
- two systems of side ladders mounting available

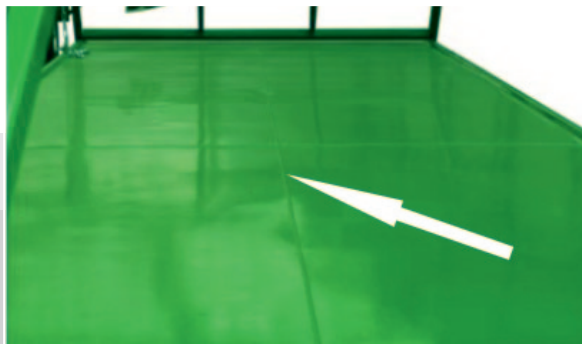
bale transportation trailer



Flush bolts and 2 point mounting system of side ladders



Rear under-ride guard integrated with rear lights



Single central weld improves aesthetic and user properties as well as durability of the trailer



Raised, rounded side profiles protect cargo from slipping and wrapped bales from tearing apart

Technical details:	PRONAR T022	PRONAR T025	
Allowable total weight (constructional):	11000	13000	[kg]
Allowable total weight:	10000	12000	[kg]
Loading capacity:	7360	9040	[kg]
Empty weight:	2640	2960	[kg]
Loading space:	16,4 (17,7*)	16,4 (17,7*)	[m ²]
Loading platform length:	6495	6495	[mm]
Loading space length:	6740 (7270*)	6740 (7270*)	[mm]
Loading platform width:	2435**	2435**	[mm]
Dimensions: length/width/height:	9135***/2500/2780	9135*** /2500/2860	[mm]
Loading platform height:	1680	1680	[mm]
Floor thickness:	3	3	[mm]
Platform height, measured from the ground:	1100	1180	[mm]
Wheel track:	1730	1820	[mm]
Suspension:	parabolic springs	parabolic springs	
Tires:	400/60-15,5	500/50-17	
Maximum speed:	40	40	[km/h]
Minimum tractor power requirement:	67,6/49,7	72,8/53,5	[hp/kW]

* with pulled out rear frame extending the platform length

** EURO pallets transportation width

*** standard platform length

- Platform width adapted to EUROPALET transport
- Adjustable rear frame extending load area
- Design speed of 40km/h
- Tandem parabolic leaf spring suspension
- T025 - Increased - in comparison to T022 - axle track and load capacity

Technical details:	PRONAR T023	
Allowable total weight (constructional):	16000	[kg]
Allowable total weight:	15000	[kg]
Loading capacity:	11300	[kg]
Empty weight:	3700	[kg]
Loading space:	24 (26,2*)	[m ²]
Loading platform length:	9695	[mm]
Loading space length:	9880 (10770*)	[mm]
Loading platform width:	2435**	[mm]
Dimensions: length/width/height:	11995***/2500/2780	[mm]
Loading platform height:	1680	[mm]
Floor thickness:	3	[mm]
Platform height, measured from the ground:	1100	[mm]
Wheel track:	1730	[mm]
Suspension:	parabolic springs	
Tires:	400/60-15,5	
Maximum speed:	40	[km/h]
Minimum tractor power requirement:	83,2/61	[hp/kW]

* with pulled out rear frame extending the platform length

** EURO pallets transportation width

*** standard platform length

- Platform width adapted to EUROPALET transport
- Front axle turns on turntable
- Parabolic leaf spring suspension





PRONAR T024

PRONAR T026



Technical details:	PRONAR T024	
Allowable total weight (constructional):	13000	[kg]
Allowable total weight:	12000	[kg]
Loading capacity:	8900	[kg]
Empty weight:	3100	[kg]
Loading space:	17,4	[m ²]
Loading platform length:	7170	[mm]
Loading platform width:	2435*	[mm]
Dimensions: length/width/height:	9290/2500/2750	[mm]
Loading platform height:	1680	[mm]
Floor thickness:	3	[mm]
Platform height, measured from the ground:	1110	[mm]
Wheel track:	1750	[mm]
Suspension:	parabolic springs	
Hitch-ring load:	1925	[kg]
Tires:	15.0/70-18TL	
Maximum speed:	40	[km/h]
Minimum tractor power requirement:	62.5/45.9	[hp/kW]

* EURO pallets transportation width

- Platform width adapted to EUROPALET transport
- Built on tandem type chassis
- Load capacity 9 t

Technical details:	PRONAR T026	
Allowable total weight (constructional):	19000	[kg]
Allowable total weight:	18000	[kg]
Loading capacity:	13720	[kg]
Empty weight:	4280	[kg]
Loading space:	24 (26,2*)	[m ²]
Loading platform length:	9695	[mm]
Loading space length:	9880 (10770*)	[mm]
Loading platform width:	2435**	[mm]
Dimensions: length /width/height:	11995***/2500/2860	[mm]
Loading platform height:	1680	[mm]
Floor thickness:	3	[mm]
Platform height, measured from the ground:	1180	[mm]
Wheel track:	1820	[mm]
Suspension:	parabolic springs	
Tires:	500/50-17	
Maximum speed:	40	[km/h]
Minimum tractor power requirement:	93.6/68.8	[hp/kW]

* with pulled out rear frame extending the platform length

** EURO pallets transportation width

*** standard platform length

- Platform width adapted to EUROPALET transport
- Increased - in comparison to T023 - axle track and load capacity
- Design speed of 40km/h



animal transportation trailer





- Wooden floor impregnated with deep penetrating wood protection
- Lighting system
- Tarpaulin cover frame together with transverse connections

Technical details:	PRONAR T046	PRONAR T046/1	
Allowable total weight:	5500	8000	[kg]
Load capacity:	3700	5360	[kg]
Empty weight:	1800	2640	[kg]
Loading space:	9.01*	14.1	[m ²]
Loading case inside length:	4160	5960	[mm]
Loading case inside width:	2360	2360	[mm]
Dimensions (Length, Width/Height)	6100/2515/2780	7980/2515/3012	[mm]
Sidewall height:	1350	1350	[mm]
Floor thickness (impregnated wood)/sidewalls (waterproof plywood):	30/18	30/18	[mm]
Platform height, measured from the ground:	700	945	[mm]
Wheel track:	2100	2100	[mm]
Suspension:	rigid	tandem with leaf springs	
Hitch-ring load:	600	1000	[kg]
Tires:	11,5/80 15,3	11,5/80 15,3	
Maximum speed:	40	40	[km/h]
Minimum tractor power requirement:	28,6/21	41,6/30,6	[hp/kW]

* surface without inner wheel arches

- Load platform from water resistant anti-slip plywood
- Springs facilitating opening and closing of rear tail ramp
- Sides from water resistant plywood foil covered both sides, thickness. 18 mm





- Hydraulically lowered load box
- Sidewalls of metal sheet profile, thickness 3 mm
- 12 t permitted total gross weight



Technical details:

PRONAR T046/2	
Allowable total weight:	12000 [kg]
Load capacity:	8500 [kg]
Empty weight:	3500 [kg]
Loading space:	14** [m ²]
Loading case inside length:	6990 [mm]
Loading case inside width:	2300 [mm]
Loading case inside height:	2100*
Dimensions (Length/Width/Height)	8920/2530/2800 [mm]
Sidewall height:	1400 [mm]
Floor thickness (impregnated wood)/ sidewalls (waterproof plywood):	4/3 [mm]
Platform height, measured from the ground (transport position/loading position):	660/130 [mm]
Wheel track:	2200 [mm]
Suspension:	hydraulic
Hitch-ring load:	1500 [kg]
Tires:	14,0/65 - 16
Maximum speed:	40 [km/h]
Minimum tractor power requirement:	65/47,8 [hp/kW]

* height from the ground to the highest point of the canvas cover frame

** surface without inner wheel arches





transshipping trailer

Technical details:
PRONAR T740

Allowable total weight (construction):	25000	[kg]
Allowable total weight:	23000	[kg]
Loading capacity:	15300	[kg]
Empty weight:	7700	[kg]
Load volume:	28	[m ³]
Unloading efficiency:	200-400	[t/h]
Loading case inside length:	6015	[mm]
Loading case inside width:	2492	[mm]
Dimensions (Length/Width/Height)	9142/2900/3645	[mm]
Sidewall height:	1440+340	[mm]
Thickness of floor/sidewalls/extensions:	4/4/3	[mm]
Distance from base to the platform:	3400	[mm]
Wheel track:	2200	[mm]
Suspension:	Tandem type with passive steering axle on parabolic springs	
Hitch-ring load:	3000	[kg]
Tires:	700/50-26,5	
Maximum speed:	40	[km/h]
Minimum tractor power requirement:	165/121,3	[hp/kW]
Hydraulically folded conveyor:	-	
Diameter:	430	[mm]
Length:	5170	[mm]
Height of the edge of unloading port:	4550-4850	[mm]



- 28 m³ load volume
- Rapid trans-shipment
- Tandem parabolic leaf spring suspension



24 24 MIESIACE GWARANCJI
24 MONTHS WARRANTY
24 MONATE GARANTIE
ГАРАНТИЯ 24 МЕСЯЦА

transshipping trailer

PRONAR T743



Technical details:

	PRONAR T743	
Allowable total weight (construction):	36000	[kg]
Allowable total weight:	33000	[kg]
Loading capacity:	22700	[kg]
Empty weight:	10300*	[kg]
Load volume:	34	[m ³]
Unloading capacity:	200-400	[t/h]
Loading case inside length:	7265	[mm]
Loading case inside width:	2492	[mm]
Dimensions (Length/Width/Height)	10392/2900/3660	[mm]
Sidewall height:	1440+340	[mm]
Thickness of floor/sidewalls/extensions:	4/4/3	[mm]
Distance from base to the platform:	3415	[mm]
Wheel track:	2200	[mm]
Suspension:	Tandem type with passive steering axle on parabolic springs	
Hitch-ring load:	3000	[kg]
Tires:	700/50-26,5	
Maximum speed:	40	[km/h]
Minimum tractor power requirement:	220/161,7	[hp/kW]
Hydraulically folded conveyer:	-	
Diameter:	430	[mm]
Length:	5170	[mm]
Height of the edge of unloading port:	4565-4865	[mm]

* approximate data

- 34 m³ load volume
- Rapid trans-shipment
- Tridem parabolic leaf spring suspension

Technical details:

	PRONAR T900	
Allowable total weight (construction):	35000	[kg]
Allowable total weight:	33000	[kg]
Loading capacity:	23500	[kg]
Empty weight:	9500	[kg]
Load volume:	36.57	[m ³]
Loading space:	19.7	[m ²]
Loading case inside length:	8320	[mm]
Loading case inside width:	2370	[mm]
Length/Width/Height:	10510/2595/3543	[mm]
Sidewall height:	2000	[mm]
Floor/wall thickness (mm) :	6/4	[mm]
Platform height, measured from the ground:	1500	[mm]
Wheel track:	2200	[mm]
Suspension:	parabolic springs	
Hitch-ring load:	3000	[kg]
Tires:	550/60-22,5	
Maximum speed:	40 [km/h]	[km/h]
Unloading system:	movable + tipping	
Oil requirement:	40	[l]
Working pressure:	200	[bar]
Minimum tractor power requirement:	182/133.8	[hp/kW]
Movable wall tipping angle:	55	[°]



- Innovative unloading system
- 33,000kg permitted total gross weight
- Double conduit pneumatic brake system
- Tridem suspension on parabolic leaf springs with central axle rigid and two axles active





power push trailer

PRONAR T902



- Tandem suspension on parabolic leaf springs with front axle rigid and rear axle active
- Drawbar with shock absorber leaf spring with height adjustment
- Hydraulically raised rear tailgate with automatic closure

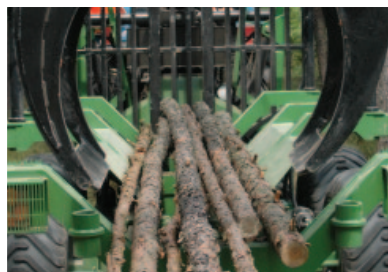
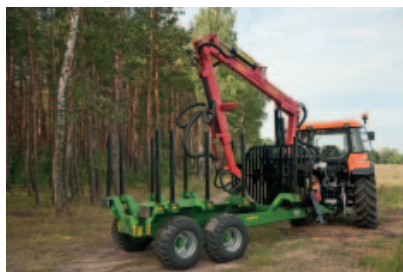


Technical details:	PRONAR T902	
Allowable total weight (construction):	24000	[kg]
Allowable total weight:	23000	[kg]
Loading capacity:	16000	[kg]
Empty weight:	7000	[kg]
Load volume:	30,8	[m ³]
Loading space:	16.8	[m ²]
Loading case inside length:	7100	[mm]
Loading case inside width:	2370	[mm]
Length/Width/Height:	9100/2550/3500	[mm]
Sidewall height:	2000	[mm]
Floor/wall thickness (mm):	4/4	[mm]
Platform height, measured from the ground:	1500	[mm]
Wheel track:	2200	[mm]
Suspension:	parabolic springs	
Hitch-ring load:	3000	[kg]
Tires:	550/60 - 22.5	
Maximum speed:	40	[km/h]
Unloading system:	movable + tipping	
Oil requirement:	30	[l]
Working pressure:	200	[bar]
Minimum tractor power requirement:	124.8/91.7	[hp/kW]
Movable wall tipping angle:	55	[°]



Technical details:	PRONAR T400	
Allowable total weight (technically):	23000	[kg]
Allowable total weight:	22000	[kg]
Load capacity:	14550	[kg]
Empty weight:	7450	[kg]
Load volume:	40	[m ³]
Loading space:	16.84	[m ²]
Loading case inside length:	8000	[mm]
Loading case inside width:	trapezoid 2080/2130	[mm]
Dimensions: length/width/height:	10100/2900/3950	[mm]
Sidewall height:	2260	[mm]
Loading case thickness (sides):	0,75	[mm]
Distance from base to the platform:	1690	[mm]
Wheel track:	2200	[mm]
Axle base:	1810	[mm]
Suspension:	Tandem on parabolic springs with passive steered axle	
Hitch-ring load:	2000	[kg]
Tires:	700/50-26.5	
Maximum speed:	40	[km/h]
Minimum tractor power requirement:	160/118	[hp/kW]





Technical details:	PRONAR T644/1	
Allowable total weight (construction):	13000	[kg]
Permissible total weight:	12200	[kg]
Load capacity:	8000	[kg]
Empty weight:	4200	[kg]
Load volume:	10.5*	[m ³]
Side posts number:	10	
Loading case inside length:	3470 (4310*)	[mm]
Loading case inside width:	1810	[mm]
Dimensions: Length/Width/Height:	6440*/2100/3300**	[mm]
Height of Loading space:	1440	[mm]
Crane working diameter:	6900	[mm]
Crane load capacity in maximum working diameter:	450	[kg]
Rotation angle of the crane:	200(left)+200(right)	[°]
Wheel track:	1670	[mm]
Suspension:	Tandem oblong balance lever with ball bearings	
Drawbar rotation angle - to the left / to the right	24°/24°	
Hitch-ring load:	2000 [kg]	[kg]
Tires:	400/60-15.5 145A8 Flot+	
Construction speed:	30	[km/h]
Minimum tractor power requirement:	65/47.8	[hp/kW]
Maximum working pressure of the hydraulic system:	180	bar

* with rear frame pulled out

** height with folded crane

- Crane on telescopic support with rotating grab
- Operated with hydraulic manifold from tractor
- Load capacity 8,000kg



Technical details:	PRONAR T185	
Permissible total weight:	15000	[kg]
Load capacity:	12130 *	[kg]
Trailer kerb weight:	2870	[kg]
Length without a container:	5940	[mm]
Length with the shortest/longest container:	6415/6782	[mm]
Width without a container:	2360	[mm]
Width with a container (min/max):	2360/2550	[mm]
Attachment dimensions of the container:		
Hook length: (min/max):	1450/1570	[mm]
Rolls track:	1070	[mm]
Permissible dimensions of the container:		
Length: (min/max):	4100/5050***	[mm]
Width:	max 2550	[mm]
Height:	max 2000	[mm]
Height of the trailer (without/with) container:	2512/2898**	[mm]
Container maximum tipping angle/oil requirement:	46/15	[° / l]
Wheel track:	1830	[mm]
Suspension:	tandem with oblong balance lever	
Hitch-ring load:	2000	[kg]
Tires:	500/50-17	
Construction speed:	40	[km/h]
Minimum tractor power requirement:	78/57.3	[hp/kW]

* with the weight of the container
 ** with container height 2000 mm
 *** size including hook



- For the transport of containers up to 5.05m length
- Maximum gross weight 15,000 kg
- Tandem suspension with longitudinal rocker arms





hook lift trailer

PRONAR T285



- For the transport of containers up to 6.4m length
- Maximum gross weight 21,000 kg
- Tandem with oblong balance lever



Technical details:

	PRONAR T285	
Permissible total weight:	21000	[kg]
Load capacity *:	16360 *	[kg]
Trailer kerb weight:	4640	[kg]
Lenght without a container:	7313	[mm]
Lenght with the shortest/longest container:	7413/8413	[mm]
Width without a container:	2550	[mm]
Width with a container (min/max):	2550	[mm]
Attachement dimensions of the container:		
Hook lenght: (min/max):	1450/1570	[mm]
Rolls track:	1060	[mm]
Permissible dimensions of the container:		
Lenght (min/max):	5400/6400	[mm]
Width:	max 2550	[mm]
Height:	max 2500	[mm]
Height of the trailer (without/with) container:	2981/3650**	[mm]
Container maximum tipping angle/oil requirement:	53/18	[°/l]
Wheel track:	1990	[mm]
Suspension:	tandem with oblong balance lever	
Hitch-ring load:	3000	[kg]
Tires:	385/65 R22.5 RE	
Construction speed:	40	[km/h]
Minimum tractor power requirement:	110/80.8	[KM/kW]

* with the weight of the container

** with container height 2500 mm



Technical details:	PRONAR T285/1	
Permissible total weight (technically):	24000	[kg]
Permissible total weight:	23000	[kg]
Load capacity:	17760 *	[kg]
Trailer kerb weight:	5240	[kg]
Lenght without a container:	7313	[mm]
Lenght with the shortest/longest container:	7413/8413	[mm]
Width without a container:	2550	[mm]
Width with a container (min/max):	2550	[mm]
Attachment dimensions of the container:		
Hook lenght: (min/max):	1450/1570	[mm]
Rolls track:	1060	[mm]
Permissible dimensions of the container:		
Lenght: (min/max):	5400/6400	[mm]
Width:	max 2550	[mm]
Height:	max 2500	[mm]
Height of the trailer (without/with) container:	2981/3650**	[mm]
Container maximum tipping angle/oil requirement:	53/18	[°/l]
Wheel track:	2000	[mm]
Suspension:	parabolic springs	
Hitch-ring load:	3000	[kg]
Tires:	445/65 R22,5 RE	
Construction speed:	40	[km/h]
Minimum tractor power requirement:	125/92	[KM/kW]

* with the weight of the container

** with container height 2500 mm





Technical details:

PRONAR PB3100

Allowable total weight (on road):	24000	[kg]
Allowable total weight (construction):	27000	[kg]
Load capacity (on road)	~18000	[kg]
Load capacity (construction)	~21000	[kg]
Empty weight:	~6000	[kg]
Load volume:	-	[m ³]
Loading space of the straight part of platform + enlargings:	16.5 (+ 3)	[m ²]
Loading space of the complete platform + enlargings:	20.5 (+3)	[m ²]
Length of the straight part of the platform:	6500	[mm]
Length of the complete platform:	8500	[mm]
Length of ramps:	2200	[mm]
Ramps angle:	15	degrees
Width of floor:	2540	[mm]
Width of floor with enlargings:	3000	[mm]
Overall dimensions (length/width/height):	11500/2550/2750	[mm]
Floor material:	wooden planks 45 mm	[mm]
Platform height, measured from the ground:	900	[mm]
Drawbar towing eye height:	830	[mm]
Axles:	BPW	
Number of axles:	3	[pcs]
Axle load (on road):	8000	[kg]
Axle load (construction):	9000	[kg]
Braking system:	pneumatic with EBS	
Suspension:	mechanical BPW	
Tires:	235/75 R17.5 (143/141J)	
Maximum speed:	100	[km/h]
Hydraulic ramps:	yes	
Loading hitches:	14	[pcs]
Side barriers:	yes	

PB3100 trailer is designed for agragation with truck

Optional equipment:

- Hydraulically driven lift
- Widened floor
- Steel box for extra boards
- warning beacon.



Technical details:
PRONAR RC2100

Allowable total weight (construction):	20000	[kg]
Allowable total weight:	19000	[kg]
Load capacity:	14700	[kg]
Empty weight:	4300	[kg]
Load volume:	-	[m³]
Loading space of the straight part of platform		[m²]
+ enlarging:	14.0 (+ 2.7)*	
Loading space of the complete platform + enlarging:	17.9 (+ 3.4)*	[m²]
Length of the straight part of the platform:	5500*	[mm]
Length of the complete platform:	7020*	[mm]
Length of ramps:	1900	[mm]
Width of floor:	2540	[mm]
Width of floor with enlargings:	3040**	[mm]
Overall dimensions (length/width/height):	9160/2550/2500	[mm]
Material of the floor:	wooden planks	[mm]
	45 mm	
Platform height, measured from the ground:	935	[mm]
Axles:	ADR/ATW	
Number of axles:	2	[pcs]
Axle load:	8000	[kg]
Drawbar towing hitch load:	3000	[kg]
Braking system:	double line pneumatic with ALB	
Suspension:	parabolic springs	
Tires:	215/75 R 17.5 (135/133J)	
Maximum speed:	40	[km/h]
Hydraulic drawbar support	straight / folded	
Drawbar hitch:	ball hitch K80	
Mechanically lowered ramps	yes	
Load holders:	11	[pcs]
Side barriers:	yes	
Minimum tractor power requirement:	104/76.4	KM/kW

* with folded ramps

** with additional equipment

- Height of platform from ground 970 mm
- Total platform length 7 m
- Load capacity 14.7 t
- Hydraulic or mechanical loading ramps





low-loading trailer

PRONAR RC2100-1 | RC2100-2



Technical details:	PRONAR RC2100-1	
Allowable total weight (construction):	20000	[kg]
Allowable total weight:	19000	[kg]
Load capacity:	14500	[kg]
Empty weight:	4500	[kg]
Load volume:	-	[m ³]
Loading space of the straight part of platform + enlarging:	15.3 (+ 3.0)*	[m ²]
Loading space of the complete platform + enlarging:	19.2 (+ 3.8)*	[m ²]
Length of the straight part of the platform:	6000*	[mm]
Length of the complete platform:	7520*	[mm]
Length of ramps:	1900	[mm]
Width of floor:	2540	[mm]
Width of floor with enlargings:	3040**	[mm]
Overall dimensions (length/width/height):	9590/2550/2500	[mm]
Material of the floor:	wooden planks 45 mm	[mm]
Platform height, measured from the ground:	935	[mm]
Number of axles:	2	[pcs]
Axle load:	8000	[kg]
Drawbar towing hitch load:	3000	[kg]
Braking system:	double line pneumatic with manual braking force regulator	
Suspension:	parabolic springs	
Tires:	215/75 R 17.5 (135/133J)	
Maximum speed:	40	[km/h]
Hydraulic drawbar support	straight / folded	
Drawbar hitch:	ball hitch K80	
Mechanically lowered ramps	yes	
Load holders:	11	[pcs]
Side barriers:	yes	
Minimum tractor power requirement:	104/76.4	KM/kW

* with folded ramps

** with additional equipment



Technical details:	PRONAR RC2100-2	
Allowable total weight (construction):	20000	[kg]
Allowable total weight:	19000	[kg]
Load capacity:	14900	[kg]
Empty weight:	4100	[kg]
Load volume:	-	[m ³]
Loading space of the straight part of platform:	14	[m ²]
Loading space of the complete platform:	17.9	[m ²]
Length of the straight part of the platform:	5500*	[mm]
Length of the complete platform:	7020*	[mm]
Length of ramps:	1900	[mm]
Width of floor:	2540	[mm]
Overall dimensions (length/width/height):	9450/2550/2460	[mm]
Material of the floor:	wooden planks 45 mm	[mm]
Platform height, measured from the ground:	930	[mm]
Number of axles:	2	[pcs]
Axle load:	8000	[kg]
Drawbar towing hitch load:	3000	[kg]
Braking system:	single line hydraulic	
Suspension:	parabolic springs	
Tires:	215/75 R 17.5 (135/133J)	
Maximum speed:	40	[km/h]
Drawbar support:	mechanical straight / folded	
Drawbar hitch:	rotary ø50	
Mechanically lowered ramps	yes	
Load holders:	10	[pcs]
Side barriers:	yes	
Minimum tractor power requirement:	104/76.4	KM/kW

* with folded ramps



Technical details:	PRONAR PC2300	
Permissible total weight:	18000	[kg]
Load capacity:	13500	[kg]
Empty weight:	4600	[kg]
Loading space of the straight part of platform + enlargings:	14,0 [+2,5]	[m ²]
Loading space of the complete platform + enlargings:	17,9 [+3,2]	[m ²]
Length of the straight part of the platform:	5500	[mm]
Length of the complete platform:	7020	[mm]
Length of ramps:	1900	[mm]
Ramps angle:	11,5	degrees
Width of floor:	2540	[mm]
Width of floor with enlargings:	3000	[mm]
Overall dimensions (length/width/height):	9500/2550/2500	[mm]
Material of the floor:	wooden planks 45 mm	[mm]
Platform height, measured from the ground:	950	[mm]
Drawbar towing eye height:	1000 [±110]	[mm]
Axles:	ATW	
Number of axles:	2	[pcs]
Axle load:	9000	[kg]
Braking system:	pneumatic with EBS	
Suspension:	pneumatic / mechanical	
Tires:	235/75 R17,5 (143/141J)	
Construction speed:	100	[km/h]
Hydraulically lowered ramps:	no	
Load holders:	9	[pcs]
Side barriers:	yes	
Support legs:	3	[pcs]





central axle tandem truck trailer

PRONAR PC2100



Technical details:

	PRONAR PC2100	
Permissible total weight:	18000	[kg]
Load capacity:	12300	[kg]
Empty weight:	5700	[kg]
Load volume:	12	[m ³]
Loading space:	12.3	[m ²]
Internal length of loading space:	5100	[mm]
Internal width of loading space:	2410*	[mm]
Sidewall height:	1000	[mm]
Overall dimensions (length/width/height):	7610/2550/2780	[mm]
Floor/wall thickness (mm) :	5 Hardox / 4 Domex	[mm]
Platform height, measured from the ground:	1540	[mm]
Axle brand:	BPW	
Number of axles:	2	[pcs]
Axle load:	9000	[kg]
Breaking system	pneumatic with EBS	
Suspension:	pneumatic	
Tires:	385/65 R 22.5 (160J.K)	
Construction speed:	100	[km/h]
Tipping system:	3-side	
Telescopic cylinder:	6/1875/22/300	
Number of telescopic cylinder sections:	6	[pcs]
Piston stroke:	1875	[mm]
Oil requirement:	22	[l]
Working pressure:	300	[bar]

* EURO pallets transportation width



- Super resistant Domex sidewalls and Hardox floor
- Knorr-Bremse pneumatic break system
- Load capacity 12.3t
- Design speed of 100 km/h





- Extradurable Domex sideboards and Hardox floor
- Pneumatic braking system
- Load volume 12.8t
- Designed speed 100km/h

Technical details:

Technical details:	PRONAR PC2100/1	
Permissible total weight:	18000	[kg]
Load capacity:	1285	[kg]
Empty weight:	5150	[kg]
Load volume:	12	[m ³]
Loading space:	12.3	[m ²]
Internal length of loading space:	5100	[mm]
Internal width of loading space:	2410*	[mm]
Sidewall height:	1000	[mm]
Overall dimensions (length/width/height):	7610/2550/2780	[mm]
Floor/wall thickness (mm) :	4 Hardox / 3 Domex	[mm]
Platform height, measured from the ground:	1540	[mm]
Axle brand:	BPW	
Number of axles:	2	[pcs]
Axle load:	9000	[kg]
Breaking system	pneumatic with EBS	
Suspension:	pneumatic	
Tires:	385/65 R 22.5 (160J,K)	
Construction speed:	100	[km/h]
Tipping system:	3-way	
Left sidewall (hydraulic):	opened / closed hydraulically	
Telescopic cylinder:	6/1875/22/300	
Number of telescopic cylinder sections:	6	[pcs]
Piston stroke:	1875	[mm]
Oil requirement:	22	[l]
Working pressure:	300	[bar]

* EURO pallets transportation width





central axle tandem truck trailer

PRONAR PC2200



Technical details:

	PRONAR PC2200	
Permissible total weight:	18000	[kg]
Load capacity:	13200	[kg]
Empty weight:	4800	[kg]
Load volume:	57	[m ³]
Loading space:	19.3	[m ²]
Internal length of loading space:	7800	[mm]
Internal width of loading space*:	2480*	[mm]
Internal sidewall height:	2970	[mm]
Sides and tailgate height	600	[mm]
Overall dimensions (length/width/height):	10210 ± 300/2550/4000	[mm]
Floor/wall thickness (mm) :	27 plywood / 25 Al	[mm]
Platform height, measured from the ground:	990	[mm]
Axle brand:	BPW	
Axles number:	2	[pcs]
Axle load:	9000	[kg]
Breaking system:	pneumatic with EBS	
Suspension:	pneumatic	
Tires:	265/70 R19.5 (160J)	
Construction speed:	100	[km/h]

* EURO pallets transportation width



- Movable side curtains and roof
- Width of load box adapted to EUROPALET transport
- BPW pneumatic suspension
- Design speed of 100km/h



Technical details:	PRONAR VMP-5S	
Permissible total weight:	3800	[kg]
Loading capacity:	2200	[kg]
Empty weight:	1600	[kg]
Container capacity:	5	[m ³]
Maximum length of container:	2990	[mm]
Maximum width of container:	2190	[mm]
Container height:	1430	[mm]
Container floor diameter::	1700	[mm]
Dimensions (Length/Width/Height)	3880/2190/2130	[mm]
Container floor/sidewall/extensions thickness	12/6	[mm]
Platform height, measured from the ground:	695	[mm]
Wheel track:	1500	[mm]
Suspension:	rigid	
Hitch-ring load:	800	[kg]
Tires:	10.0/75-15.3	
Construction speed:	15	[km/h]
Weighting system:	3-points	
Feeding system:	lateral with window on sidewall	
Number of mixer rotations (PTO ratio 540 RPM):	33	[rpm]
Minimum tractor power requirement:	50/36.7	[hp/kW]

- ideal for herds up to 40 cows
- extremely rigid and wear resistant container body
- feeding window on the right side of the container facilitates easy and seamless feed application
- ergonomic design of feed wagon auger allows for shorter feed cutting and mixing
- 4 high quality knives guarantee long and defectless operation
- 2 manually operated knives inside the container
- top ring keeps feed inside
- 3 point weighing system below the container floor
- large visible and adjustable LCD display
- balcony and ladders on both sides of the wagon
- power requirement min. 50HP/36.7kW





Technical details:

PRONAR VMP-5T

Permissible total weight:	3800	[kg]
Loading capacity:	2200	[kg]
Empty weight:	1600	[kg]
Container capacity:	5	[m ³]
Maximum length of container:	2990	[mm]
Maximum width of container:	2190	[mm]
Container height:	1430	[mm]
Container floor diameter:	1700	[mm]
Dimensions (Length/Width/Height)	3880/2190/2130	[mm]
Container floor/sidewall/extensions thickness	12/6	[mm]
Platform height, measured from the ground:	695	[mm]
Wheel track:	1500	[mm]
Suspension:	rigid	
Hitch-ring load:	800	[kg]
Tires:	10.0/75-15.3	
Construction speed:	15	[km/h]
Weighting system:	3-points	
Feeding system:	lateral with window on sidewall	
Number of mixer rotations (PTO ratio 540 RPM):	33	[rpm]
Minimum tractor power requirement:	50/36.7	[hp/kW]



Technical details:

PRONAR VMP-10

Permissible total weight:	7700	[kg]
Loading capacity:	4000	[kg]
Empty weight:	3700	[kg]
Container capacity:	10*	[m ³]
Container loading surface	7.1	[m ²]
Maximum length of container:	3530	[mm]
Maximum width of container:	2490	[mm]
Container height:	1588**	[mm]
Container floor diameter:	1960	[mm]
Dimensions (Length/Width/Height)	4860/2550/2670	[mm]
Container floor/sidewall/extensions thickness	20/8/8	[mm]
Platform height, measured from the ground:	820	[mm]
Wheel track:	1700	[mm]
Suspension:	rigid	
Hitch-ring load:	1300	[kg]
Tires:	30x11.5-14.5 RE	
Construction speed:	25	[km/h]
Weighting system:	4-points	
Feeding system:	lateral with window on sidewall	
Number of mixer rotations (PTO ratio 540 RPM):	25	[rpm]
Minimum tractor power requirement:	60/44.1	[hp/kW]

* Container capacity with extension 250mm

** Internal height of the container without extension

- To serve herd of cows numbering 50 - 60 animals
- Possibility of setting cutting knives in 3 positions
- Possibility of increasing container volume by 2 m³ (to 12 m³ total volume)



VMP-10 - two symmetrical feeding windows on both sides of the wagon.





Technical details:

		PRONAR VMP-10S	
Permissible total weight:	7700	[kg]	
Loading capacity:	4000	[kg]	
Empty weight:	3700	[kg]	
Container capacity:	10*	[m ³]	
Maximum length of container:	3530	[mm]	
Maximum width of container:	2490	[mm]	
Container height:	1588**		
Container floor diameter:	1960	[mm]	
Dimensions (Length/Width/Height)	4860/2490/2700	[mm]	
Container floor/sidewall/extensions thickness	20/8/8	[mm]	
Platform height, measured from the ground:	820	[mm]	
Wheel track:	1700	[mm]	
Suspension:	rigid		
Hitch-ring load:	1300	[kg]	
Tires:	30/11.5-14.5 RE		
Construction speed:	25	[km/h]	
Weighting system:	4-points		
Feeding system:	lateral with window on sidewall		
Number of mixer rotations (PTO ratio 540 RPM):	25	[rpm]	
Minimum tractor power requirement:	60/44.1	[hp/kW]	

* Container capacity with extension 250mm

** Internal height of the container without extension

Technical details:	PRONAR T314	PRONAR T315	PRONAR T315	
Allowable total weight:	5800	7200	8650	[kg]
Loading capacity:	4400	5500	6600	[kg]
Empty weight:	1400	1700	2050	[kg]
Tank capacity:	4000	5000	6000	[l]
Tank length:	2840	3460	4120	[mm]
Tank diameter:	1400	1400	1400	[mm]
Tank plate thickness:	5	5	5	[mm]
Dimensions (length, width, height):	5350/2050/2380	5965/2300/2430	6708/2400/2610	[mm]
Tank mounting:	on the suspension frame	on the suspension frame	on the suspension frame	
Filling system / discharge system:	Pneumatic underpressure/overpressure	Pneumatic underpressure/overpressure	Pneumatic underpressure/overpressure	
Wheel track:	1650	1770	1860	[mm]
Suspension:	one axle, rigid	one axle, rigid	one axle, rigid	
Hitch-ring load:	1000	1300	1400	[kg]
Tires:	400/60-15,5	500/50x17	500/60-22,5	
Maximum speed:	40	40	40	[km/h]
Minimum tractor power requirement:	45 / 33	54,38/40	65,26/48	[HP/kW]
PTO range:	540	540	540	[rpm]
Maximum compressor efficiency:	4350	6150	6150	[L/min]
Maximim filling time:	4	4	5	[min]



SINGLE AXLE TRAILER

T671 Standard equipment:

Loading box with universal system of sidewalls opening
Central locking mechanism
Chassis frame: conical
Drawbar: rigid to couple with lower hitch of the tractor
Drawbar towing hitch: rigid with Ø50 towing eye
Drawbar support: straight with folded steel wheel
Braking system: single line pneumatic or double line pneumatic or hydraulic
Crank handbrake
Lighting system 12 V with rear electrical socket
Tipping system with cut-off valve
Three side tipping cylinder
Side walls and extensions made of PRONAR profiles 500mm with rim 70mm
Side walls and extensions made of PRONAR profiles 500mm with rim 70mm
Three side tipping cylinder
PF500mm+500mm profile sidewalls
Sidewalls fastening string
Rear grain damper, locked in the rear wall
Wheel chocks + racks (2 pcs)
Ladder and steps facilitating the access to the loading box
Chassis color red RAL3000 PRONAR
Sidewalls color green RAL6010 PRONAR
Mechanical support of the loading box
Additional equipment (optional) :
No PF 500mm side extensions
Tarpaulin with frame
Drawbar: rigid to coupling with upper hitch of the tractor
Drawbar with rigid towing eye Ø40
Drawbar with rotary towing eye Ø50
Made for 40km/h
Parking handbrake with lever
Rear manual hitch, rigid
Rear coupling for second trailer
Grain chute spout
Tires 400/60-15.5 Flotation+
Tires 15.0/70 - 18 (used for 40km/h)
Spare wheel (separately) 400/60-15.5
Spare wheel (separately) 400/60-15.5 Flotation+
Spare wheel (separately) 15.0/70 - 18
Slow-moving vehicle triangle
Auger for unloading grain with efficiency of 30 t/h

T655 Standard equipment:

Loading box with universal system of sidewalls opening
Central locking mechanism
Chassis frame: conical
Drawbar: rigid to couple with lower hitch of the tractor
Drawbar towing hitch: rigid with Ø50 towing eye
Drawbar support: straight with folded steel wheel
Braking system: single line pneumatic or double line pneumatic or hydraulic
Crank handbrake
12V lighting system
Tipping system with cut-off valve
Three side tipping cylinder
Side walls made of PRONAR profiles 400 mm
Wheel chocks + racks (2 pcs)
Chemically hardened painting materials, UV-resistant
Chassis frame color black RAL9005
Sidewalls color orange RAL 2008
Mechanical support of the loading box
Additional equipment (optional) :
Drawbar: rigid to couple with upper hitch of the tractor
Drawbar with rigid towing eye Ø40
Drawbar with rotary towing eye Ø50
Sidewall extensions made of profile PP 400mm with ladder
No braking system (non-braked axle)
Overrun brake system
Parking handbrake with lever
Chassis frame color red RAL 3000 PRONAR
Sidewalls color green RAL 6010 PRONAR
Spare wheel (separately) 10.0/75-15.3
Slow-moving vehicle warning triangle

T654 Standard equipment:

Loading box with universal system of sidewalls opening
Central locking mechanism
Chassis frame: conical
Drawbar: rigid to couple with lower hitch of the tractor
Drawbar towing hitch: rigid with Ø50 towing eye
Drawbar support: straight with folded steel wheel
Braking system: single line pneumatic or double line pneumatic or hydraulic
Lighting system 12 V with rear electrical socket
Crank handbrake
Tipping system with cut-off valve
Three side tipping cylinder
Side walls made of PRONAR profiles 400 mm
Sidewalls fastening string
Wheel chocks + racks (2 pcs)
Chassis color red RAL3000 PRONAR
Sidewalls color green RAL6010 PRONAR
Mechanical support of the loading box
Additional equipment (optional) :
Drawbar: rigid to couple with upper hitch of the tractor
Drawbar with rigid towing eye Ø40
Drawbar with rotary towing eye Ø50
Sidewall extensions made of profile PP 400mm with ladder
No braking system (non-braked axle)
Overrun brake system
Grain chute spout
Rear grain damper, locked in the rear wall
Parking handbrake with lever
Rear sockets for hydraulic installation and brakes for second trailer
Rear manual hitch, rigid
Spare wheel (separately) 10.0/75-15.3
Slow-moving vehicle triangle



T654/1 Standard equipment:

Loading box with universal system of sidewalls opening
 Central locking mechanism
 Chassis frame: conical
 Drawbar: rigid to couple with lower hitch of the tractor
 Drawbar towing hitch: rigid with Ø50 towing eye
 Drawbar support: straight with folded steel wheel
 Braking system: single line pneumatic or double line pneumatic or hydraulic
 Crank handbrake
 Lighting system 12 V with rear electrical socket
 Tipping system with cut-off valve
 Three side tipping cylinder
 Side walls and extensions made of PRONAR profiles 500mm + 500mm with rim 70mm
 Sidewalls fastening string
 Wheel chocks + racks (2 pcs)
 Chassis color red RAL3000 PRONAR
 Sidewalls color green RAL6010 PRONAR
 Ladder and steps facilitating the access to the loading box
 Rear grain damper, locked in the rear wall
 Mechanical support of the loading box
Additional equipment (optional) :
 No PF 500mm side extensions
 Drawbar towing hitch: rigid for coupling with upper hitch of the tractor
 Drawbar with rigid towing eye Ø40mm
 Drawbar with rotary towing eye Ø50mm
 Parking handbrake with lever
 Overrun brake system
 Rear manual hitch, rigid
 Rear sockets for hydraulic installation and brakes for second trailer
 Grain chute spout
 Rear grain damper
 Tires 12.5/80-15.3
 Tires 14.0/65-16
 Spare wheel (separately) 11.5/80-15.3
 Spare wheel (separately) 12.5-15.3
 Spare wheel (separately) 14.0/65-16
 Slow-moving vehicle triangle

DOUBLE AXLE TRAILER

T653 Standard equipment:

Loading box with universal system of sidewalls opening
 Central locking mechanism
 Drawbar V type: rigid with Ø40mm towing eye
 Braking system: single line, double line pneumatic or hydraulic
 Crank handbrake
 Lighting system 12 V with rear electrical socket
 Rear manual hitch, rigid
 Rear coupling for second trailer
 Tipping system with cut-off valve
 Three side tipping cylinder
 Side walls made of PRONAR profiles 500mm with rim 70mm
 Rear grain damper, locked in the rear wall
 Wheel chocks + racks (2 pcs)
 Chemically hardened painting materials, UV-resistant
 Chassis color red RAL 3000 PRONAR
 Sidewalls color green RAL 6010 PRONAR
 Mechanical support of the loading box
 Sidewalls fastening string
 Conical shape of loading box
 Rear mudguards
 Ladder
Additional equipment (optional) :
 Drawbar V type: rigid with Ø50 towing eye
 Drawbar Y type: rigid with Ø40 towing eye
 Parking handbrake with lever
 Tarpaulin with frame
 Grain chute spout
 Spare wheel hanger
 Tires 11.5/80-15.3
 Sidewall extensions 1000 mm made of wire netting Ø8
 Sidewall extensions 1000 mm made of wire netting Ø30
 Spare wheel (separately) 10.0/75-15.3
 Spare wheel (separately) 11.5/80-15.3
 Slow-moving vehicle triangle

T653/1 Standard equipment:

Loading box with universal system of sidewalls opening
 Central locking mechanism
 Drawbar V type: rigid with Ø40mm towing eye
 Rotating turntable
 Braking system: single line, double line pneumatic or hydraulic
 Crank handbrake
 Lighting system 12 V with rear electrical socket
 Rear manual hitch, rigid
 Rear coupling for second trailer
 Tipping system with cut-off valve
 Three side tipping cylinder
 Side walls made of PRONAR profiles 500mm with rim 70mm
 Rear grain damper, locked in the rear wall
 Wheel chocks + racks (2 pcs)
 Chemically hardened painting materials, UV-resistant
 Chassis color red RAL 3000 PRONAR
 Sidewalls color green RAL 6010 PRONAR
 Rear mudguards
 Ladder and steps facilitating the access to the loading box
 Mechanical support of the loading box
 Conical shape of loading box
Additional equipment (optional) :
 Side wall extensions made of PRONAR profiles 500mm with rim 70mm
 Drawbar Y type: rigid with Ø40 towing eye
 Parking handbrake with lever
 Tarpaulin with frame
 Rolled tarpaulin with frame
 Grain chute spout
 Spare wheel hanger
 Tires 14.0/65-16
 Sidewall extensions 1000 mm made of wire netting Ø8
 Sidewall extensions 1000 mm made of wire netting Ø30
 Spare wheel (separately) 11.5/80-15.3
 Spare wheel (separately) 14.0/65-16
 Operator's platform
 Slow-moving vehicle triangle
 Auger for unloading grain with efficiency 30 of t/h

T653/2 Standard equipment:

Drawbar V type: rigid with Ø40mm towing eye
 Braking system: single line, double line pneumatic or hydraulic
 Crank handbrake
 Lighting system 12 V with rear electrical socket
 Rear manual hitch, rigid
 Rear coupling for second trailer
 Tipping system with cut-off valve
 Three side tipping cylinder
 Side walls made of PRONAR profiles 500mm with rim 70mm
 Rear grain damper, locked in the rear wall
 Chemically hardened painting materials , UV-resistant
 Wheel chocks + racks (2 pcs)
 Chassis color red RAL 3000 PRONAR
 Sidewalls color green RAL 6010 PRONAR
 Rear mudguards
 Ladder and steps facilitating the access to the loading box
 Mechanical support of the loading box
 Conical shape of loading box

Additional equipment (optional) :

Drawbar V type: rigid with Ø50 towing eye
 Side wall extensions made of PRONAR profiles 500mm with rim 70mm
 Drawbar Y type: rigid with Ø40 towing eye
 Parking handbrake with lever
 Tarpaulin with frame
 Rolled tarpaulin with frame
 Grain chute spout
 Spare wheel hanger
 Tires 14.0/65-16
 Sidewall extensions 1000 mm made of wire netting Ø8
 Sidewall extensions 1000 mm made of wire netting Ø30
 Spare wheel (separately) 11.5/80-15.3
 Spare wheel (separately) 14.0/65-16
 Operator's platform
 Slow-moving vehicle triangle
 Auger for unloading grain with efficiency of 30 t/h *

T653/3 Standard equipment:

Drawbar V type: rigid with Ø40mm towing eye
 Braking system: single line, double line pneumatic or hydraulic
 Crank handbrake
 Lighting system 12 V with rear electrical socket
 Rear manual hitch, rigid
 Rear coupling for second trailer
 Tipping system with cut-off valve
 Three side tipping cylinder
 Side walls made of PRONAR profiles 500mm with rim 70mm
 Rear grain damper, locked in the rear wall
 Chemically hardened painting materials , UV-resistant
 Wheel chocks + racks (2 pcs)
 Chassis color red RAL 3000 PRONAR
 Sidewalls color green RAL 6010 PRONAR
 Rear mudguards
 Ladder and steps facilitating the access to the loading box
 Mechanical support of the loading box
 Conical shape of loading box

Additional equipment (optional) :

Drawbar V type: rigid with Ø50 towing eye
 Side wall extensions made of PRONAR profiles 500mm with rim 70mm
 Drawbar Y type: rigid with Ø40 towing eye
 Parking handbrake with lever
 Braking system: double line pneumatic with ALB
 Tarpaulin with frame
 Rolled tarpaulin with frame
 Grain chute spout
 Spare wheel hanger
 Front mudguards
 Sidewall extensions 1000 mm made of wire netting Ø8
 Sidewall extensions 1000 mm made of wire netting Ø30
 Operator's platform
 Slow-moving vehicle triangle
 Auger for unloading grain with efficiency of 30 t/h

T672 Standard equipment:

Loading box with universal system of sidewalls opening
 Central locking mechanism
 Chassis frame- rectangular
 Drawbar V type: rigid with Ø40 towing eye
 Rotating turntable
 Braking system: single line, double line pneumatic or hydraulic
 Crank handbrake
 Lighting system 12 V with rear electrical socket
 Rear manual hitch, amortized
 Rear coupling for second trailer
 Tipping system with cut-off valve
 Three side tipping cylinder
 Side walls made of PRONAR profiles 500mm with rim 70mm
 Sidewalls fastening string
 Rear grain damper, locked in the rear wall
 Chemically hardened painting materials , UV-resistant
 Wheel chocks + racks (2 pcs)
 Chassis color red RAL3000 PRONAR
 Sidewalls color green RAL 6010 PRONAR
 Rear mudguards
 Ladder and steps facilitating the access to the loading box
 Rear lamps with protective grating
 Mechanical support of the loading box
 Conical shape of loading box
 PF500 mm+500 mm profile sidewalls
Additional equipment (optional) :
 Drawbar V type: rigid with Ø50 towing eye
 Drawbar Y type: rigid with Ø40 towing eye
 Braking system: double line pneumatic with automatic braking speed controller
 Rolled tarpaulin with frame
 Operator's platform
 Grain chute spout
 Spare wheel hanger on the wall *
 Tires 12.5/80-18 ** (Under-axle spacers are needed)
 Tires 15.0/70-18** (Under-axle spacers are needed)
 Under-axle spacers for a set of optional Tires
 Side walls extensions made of PRONAR profiles 500mm with rim 70mm
 Middle sidewall extension made of PRONAR profile 500mm
 Sidewall extensions 1000 mm made of wire netting 30mm
 Sidewall extensions 1000 mm made of wire netting 8mm
 Springs supporting of opening side walls
 Rear automatic hitch UNIMAR
 Rear automatic hitch RO*400A4600
 Spare wheel (separately) 400/60-15.5
 Spare wheel (separately) 12.5/80-18
 Spare wheel (separately) 15.0/70-18 16PR
 Slow-moving vehicle triangle
 Auger for unloading grain with efficiency of 30 t/h **

T672/1 Standard equipment:

Loading box with universal system of sidewalls opening
Reinforced floor pan with walls central locking mechanism
Drawbar V type: rigid with Ø40 towing eye
Braking system: single line, double line pneumatic or hydraulic
Crank handbrake
Lighting system 12 V with rear electrical socket
Rear manual hitch, amortized
Rear coupling for second trailer
Tipping system with cut-off valve
Three side tipping cylinder
Side walls made of PRONAR profiles 600mm with rim 70mm
Sidewalls fastening string
Rear grain damper, locked in the rear wall
Chemically hardened painting materials, UV-resistant
Wheel chocks + racks (2 pcs)
Chassis color red RAL3000 PRONAR
Sidewalls color green RAL 6010 PRONAR
Rear mudguards
Ladder and steps facilitating the access to the loading box
Rear lamps with protective grating
Mechanical support of the loading box
Conical shape of loading box

Additional equipment (optional) :

Drawbar V type: rigid with Ø50 towing eye
Drawbar Y type: rigid with Ø40 towing eye
Braking system: double line pneumatic with automatic braking speed controller
Rolled tarpaulin with frame
Operator's platform
Sidewalls extension made of profile PF 600mm with rim 70mm
Middle sidewall extension made of PRONAR profile 600mm
Sidewall extensions 1000 mm made of wire netting 30mm
Sidewall extensions 1000 mm made of wire netting 8mm
Grain chute spout
Spare wheel hanger on the wall
Tires 385/55 R22.5
Tires 385/55 R22.5 RE
Tires 500/50 - 17
Springs supporting of opening side walls
Rear automatic hitch UNIMAR
Rear automatic hitch RO*400A4600
Spare wheel (separately) 15.0/70-18 16PR
Spare wheel (separately) 385/55 R22.5
Spare wheel (separately) 385/55 R22.5 RE
Spare wheel (separately) 500/50 -17
Slow-moving vehicle triangle
Auger for unloading grain with efficiency of 30 t/h

T672/2 Standard equipment:

Loading box with universal system of sidewalls opening
Loading box with universal system of sidewalls opening
Reinforced floor pan with walls central locking mechanism
Drawbar V type: rigid with Ø40 towing eye
Braking system: single line, double line pneumatic or hydraulic
Braking system: single line, double line pneumatic or hydraulic
Axles 60 km/h
Crank handbrake
Lighting system 12 V with rear electrical socket
Rear manual hitch, amortized
Rear coupling for second trailer
Tipping system with cut-off valve
Load volume:
Side walls made of PRONAR profiles 600mm with rim 70mm
Sidewalls fastening string
Rear grain damper, locked in the rear wall
Chemically hardened painting materials, UV-resistant
Wheel chocks + racks (2 pcs)
Chassis color red RAL3000 PRONAR
Sidewalls color green RAL 6010 PRONAR
Rear mudguards
Ladder and steps facilitating the access to the loading box
Rear lamps with protective grating
Mechanical support of the loading box
Conical shape of loading box
Load volume:

Additional equipment (optional) :

Drawbar V type: rigid with Ø50 towing eye
Drawbar Y type: rigid with Ø40 towing eye
Braking system: double line pneumatic with automatic braking speed controller
Rolled tarpaulin with frame
Operator's platform
Sidewalls extension made of profile PF 600mm with rim 70mm
Middle sidewall extension made of PRONAR profile 600mm
Sidewall extensions 1000 mm made of wire netting 30mm
Sidewall extensions 1000 mm made of wire netting 8mm
Grain chute spout
Tires 385/65 R22.5
Tires 425/65 R22.5
Springs supporting of opening side walls
Rear automatic hitch UNIMAR
Rear automatic hitch RO*400A4600
Spare wheel (separately) 385/65 R22.5 (15 R22.5) RE
Spare wheel (separately) 385/65 R22.5 (15 R22.5)
Spare wheel (separately) 425/65 R22.5
Slow-moving vehicle triangle
Auger for unloading grain with efficiency 30 t/h

T680 Standard equipment:

Loading case with universal walls opening system
Reinforced floor pan with central sidewalls locking mechanism
Drawbar V type: fixed with Ø40 towing eye
Braking system: single line, double line pneumatic or hydraulic
Axles for 60 km/h
Crank handbrake
Rear couplings for second trailer
Tipping system with cut-off valve
Telescopic servo-motor of 3-side tipping system
PF800 mm+600 mm profile sidewalls
Sidewalls fastening string
Rear grain damper
Wheel chocks + racks
Plastic rear mudguards
Ladder
Chemically hardened painting materials, UV-resistant
Spare wheel support available for: 385/65 R22,5 and 425/65 R22,5
Chassis color red RAL3000 PRONAR
Clearance lights
The construction of container suitable for EUROPALLET transport
Additional equipment (optional) :
Drawbar V type: fixed with Ø50 towing eye
Drawbar Y type: fixed with Ø40 towing eye
Braking system: double line pneumatic with braking speed controller
Operator's platform
Complete rolled cover with frame
No beam for spare wheel
Grain chute spout
Grain slide system (side and rear pipes)
Tires 385/65 R22.5
Tires 425/65 R22.5 (4 wheels)
Tires 550/45 R22.5 (4 wheels)
Tires 550/45 R22.5 (4 wheels)
Side under-ride guards
Plastic front mudguards
Additional plastic rear mudguards
Rear automatic hitch UNIMAR
Rear automatic hitch ROCKINGER 400A4600
Spare wheel (separately) 425/65 R22.5
Spare wheel (separately) 550/45 R22.5
Spare wheel (separately) 500/60 R22.5
Spare wheel 385/65 R22.5 with beam
Three grain chute spouts with blockade
Slow-moving vehicle triangle
Auger for unloading grain with efficiency 30 t/h

T680P Standard equipment:

Loading case with special walls opening system
 Reinforced floor pan with central sidewalls locking mechanism
 V Drawbar hitch: fixed with Ø40 towing eye
 Braking system: single line, double line pneumatic or hydraulic
 Axles for 60 km/h
 Crank handbrake
 Rear couplings for second trailer
 Tipping system with cut-off valve
 Telescopic servo-motor of 3-side tipping system
 Segmented sidewalls with middle posts
 Right-sidewall height 800+740 mm, swing and collapsible opening system
 Left-sidewall height 1540 mm, door like opening system
 Rear wall height 1540mm, swing and collapsible opening system
 Rear grain damper
 Wheel chocks + racks
 Chassis color red RAL3000 PRONAR
 Spare wheel support available for: 385/65 R22,5 and 425/65 R22,5
 Plastic rear mudguards
 Ladder
 Frame for the cover
 The construction of container suitable for EUROPALET transport
 Both sides foiled 18 mm plywood waterproof walls
 Walls colour- plywood foiled - dark brown
 Clearance lights

Additional equipment (optional):

Drawbar V type: fixed with Ø50 towing eye
 Drawbar Y type: fixed with Ø40 towing eye
 Braking system: double line pneumatic with braking speed controller
 Operator's platform
 Complete rolled cover with frame
 No beam for spare wheel
 Grain chute spout
 Grain slide system (side and rear pipes)
 Tires 385/65 R22.5
 Tires 425/65 R22.5 (4 wheels)
 Tires 550/45 R22.5 (4 wheels)
 Tires 550/45 R22.5 (4 wheels)
 Side under-ride guards
 Plastic front mudguards
 Additional plastic rear mudguards
 Rear automatic hitch UNIMAR
 Rear automatic hitch ROCKINGER 400A4600
 Spare wheel (separately) 425/65 R22.5
 Spare wheel (separately) 550/45 R22.5
 Spare wheel (separately) 500/60 R22.5
 Spare wheel 385/65 R22.5 with beam
 Three grain chute spouts with blockade
 Slow-moving vehicle triangle JEST W KARCIE
 Auger for unloading grain with efficiency 30 t/h

T680H Standard equipment:

Loading case with universal walls opening system
 Reinforced floor pan with central wall locking mechanism
 Drawbar V type: fixed with Ø40 towing eye
 Braking system: single line, double line pneumatic or hydraulic
 Crank handbrake
 Rear couplings for second trailer
 Axles for 60 km/h
 Tipping system with cut-off valve
 Telescopic servo-motor of 3-side tipping system
 Sidewall rubber sealing
 Left sidewall height 1700 mm driven hydraulically
 Right lower sidewall height 800 mm swing and collapsible system
 Rear lower sidewall height 800 mm swing and collapsible system
 Rear grain damper
 Chemically hardened painting materials , UV-resistant
 Wheel chocks + racks
 Chassis color red RAL3000 PRONAR
 Sidewalls color green RAL 6010 PRONAR
 Plastic rear mudguards
 Ladder
 Construction of container suitable for EUROPALET transport
 Beam for spare wheel
 Spare wheel support available for: 385/65 R22,5 and 425/65 R22,5

Additional equipment (optional) :

Drawbar V type: fixed with Ø50 towing eye
 Drawbar Y type: fixed with Ø40 towing eye
 Braking system: double line pneumatic with braking speed controller
 Complete rolled cover with frame
 Operator's platform
 No beam for spare wheel
 Right sidewall extension 500 mm
 Grain chute spout
 Two grain chute spouts
 Tires 385/65 R22.5
 Tires 425/65 R22.5 (4 wheels)
 Tires 550/45 R22.5 (4 wheels)
 Tires 550/45 R22.5 (4 wheels)
 Side under-ride guards
 Plastic front mudguards
 Plastic rear mudguards
 Rear automatic hitch UNIMAR
 Rear automatic hitch ROCKINGER 400A4600
 Spare wheel (separately) 425/65 R22.5
 Spare wheel (separately) 550/45 R22.5
 Spare wheel (separately) 500/60 R22.5
 Spare wheel 385/65 R22.5 with beam
 Slow-moving vehicle triangle
 Auger for unloading grain with efficiency 30 t/h

T680U Standard equipment:

Loading case with universal walls opening system
 Reinforced floor pan with central sidewalls locking mechanism
 Replaceable rubber seals, placed in slots at the floor plate, with three sides of the floor, ensuring the tightness of the trailer
 Construction of container suitable for EUROPALET transport
 Chassis frame made of steel rectangular profiles
 V Drawbar hitch: fixed with Ø40 towing eye
 Management system: ball turntable rotating frame
 Braking system: single line, double line pneumatic or hydraulic
 Axles for 60 km/h
 Crank handbrake
 Lighting system 12 V with rear electrical socket
 Coiled connecting cable for the lighting installation
 Rear couplings for second trailer
 Tipping system with cut-off valve
 Telescopic servo-motor of 3-side tipping system
 PF800 mm + 600 mm profile sidewalls
 Sidewalls fastening string
 Rear grain damper
 Wheel chocks + racks
 Chemically hardened painting materials , UV-resistant
 Chassis color red RAL3000 PRONAR
 Sidewalls color green RAL 6010 PRONAR
 Plastic rear mudguards
 Ladder
 Beam for spare wheel
 Spare wheel support available for: 385/65 R22,5
 Clearance lights

Additional equipment (optional):

V V Drawbar hitch: fixed with Ø50 towing eye
 Y Drawbar hitch: fixed with Ø40 towing eye
 Braking system: double line pneumatic with braking speed controller
 Complete rolled cover with frame
 Operator's platform
 Sidewalls made of profiles 600mm
 Sidewalls extensions made of profile PF800 mm instead of 600 mm
 Grain chute spout
 Tires 385/65 R22.5 (4 wheels)
 Tires 425/65 R22.5 (4 wheels)
 Tires 550/45 R22.5 (4 wheels)
 Tires 500/60 R22.5 (4 wheels)
 Side under-ride guards
 Rear automatic hitch UNIMAR
 Rear automatic hitch ROCKINGER 400A4600
 Spare wheel (separately) 425/65 R22.5
 Spare wheel (separately) 550/45 R22.5
 Spare wheel (separately) 500/60 R22.5
 Spare wheel 385/65 R22,5 with beam
 Without beam
 Plastic front mudguards
 Additional rear plastic mudguards
 Tool box
 Slow-moving vehicle triangle
 Auger for unloading grain with efficiency 30 t/h

**PT606 Standard equipment:**

Loading box with universal system of sidewalls opening
 Loading box with universal system of sidewalls opening
 Reinforced floor pan with walls central locking mechanism
 Drawbar V type: rigid with Ø40 towing eye
 Braking system: single line, double line pneumatic or hydraulic
 Braking system: single line, double line pneumatic or hydraulic
 Crank handbrake
 Lighting system 12 V with rear electrical socket
 Rear manual hitch, rigid
 Rear coupling for second trailer
 Tipping system with cut-off valve
 Three side tipping cylinder
 Side walls made of PRONAR profiles 500mm with rim 60mm
 Rear mudguards
 Wheel chocks + racks (2 pcs)
 Ladder and steps facilitating the access to the loading box
 Chemically hardened painting materials , UV-resistant
 Tension slat of the sidewalls
 Chassis color red RAL3000 PRONAR
 Sidewalls color orange RAL 2008 PRONAR
 Loading box adapted to transport europallets
 Mechanical support of the loading box
 Rear grain damper

Additional equipment (optional):

Drawbar V type: rigid with Ø50 towing eye
 Drawbar Y type: rigid with Ø40 towing eye
 Braking system: double line pneumatic with automatic braking speed controller
 Overrun brake system
 Tension slat of the sidewall extensions 2pcs.
 Tarpaulin with frame
 Rolled tarpaulin with frame
 Side walls extensions made of PRONAR profiles 500mm with rim 60mm
 Grain chute spout
 Operator's platform
 Rear manual, amortized hitch
 Rear manual hitch MH31-3 V. Orlandi
 Rear automatic hitch IH31-3 V. Orlandi
 Tires 400/60-15,5
 Water tank (30L) with soap dispenser
 Toolbox (~50L)
 Front mudguards
 Spare wheel hanger on the wall
 Spare wheel hanger with winch
 Spare wheel (separately) 14.0/65-16
 Spare wheel (separately) 400/60 - 15.5
 The chute along the entire width of the trailer
 Slow-moving vehicle triangle
 Auger for unloading grain with efficiency 30 t/h

PT608 Standard equipment:

Loading box with universal system of sidewalls opening
 Loading box with universal system of sidewalls opening
 Reinforced floor pan with walls central locking mechanism
 Drawbar V type: rigid with Ø40 towing eye
 Braking system: single line, double line pneumatic or hydraulic
 Braking system: single line, double line pneumatic or hydraulic
 Crank handbrake
 Lighting system 12 V with rear electrical socket
 Rear manual hitch, amortized
 Rear coupling for second trailer
 Tipping system with cut-off valve
 Three side tipping cylinder
 Side walls made of PRONAR profiles 500mm with rim 60mm
 Rear mudguards
 Rear grain damper, locked in the rear wall
 Wheel chocks + racks (2 pcs)
 Ladder and steps facilitating the access to the loading box
 Tension slat of the sidewalls
 Chemically hardened painting materials , UV-resistant
 Chassis color red RAL3000 PRONAR
 Sidewalls color green RAL6010 PRONAR
 Rear lamps with protective grating
 Loading box adapted to transport europallets
 Mechanical support of the loading box

Additional equipment (optional):

Drawbar V type: rigid with Ø50 towing eye
 Drawbar Y type: rigid with Ø40 towing eye
 Braking system: double line pneumatic with automatic braking speed controller
 Rolled tarpaulin with frame
 Operator's platform
 Sidewalls extension made of profile PF 500mm with rim 60mm
 Middle sidewall extension made of profile PF 500mm
 Springs supporting of opening side walls
 Grain chute spout
 Rear automatic hitch UNIMAR
 Rear automatic hitch RO*400A4600
 Tension slat of the sidewall extensions 2pcs.
 Tires 12.5/80-18
 Tires 15.0/70-18
 Tires 385/55 R22.5
 Tires 385/55 R22.5 RE
 Spare wheel (separately) 14.0/65-16
 Spare wheel (separately) 12.5/80-18
 Spare wheel (separately) 15.0/70-18
 Spare wheel (separately) 385/55 R22.5
 Spare wheel (separately) 385/55 R22.5 RE
 Front mudguards
 Additional rear plastic mudguards
 Toolbox
 Side underrun protection
 The chute along the entire width of the trailer
 Slow-moving vehicle triangle
 Auger for unloading grain with efficiency of 30 t/h

PT610 Standard equipment:

Loading box with universal system of sidewalls opening
 Loading box with universal system of sidewalls opening
 Reinforced floor pan with walls central locking mechanism
 Drawbar V type: rigid with Ø40 towing eye
 Braking system: single line, double line pneumatic or hydraulic
 Braking system: single line, double line pneumatic or hydraulic
 Axles 60 km/h
 Crank handbrake
 Lighting system 12 V with rear electrical socket
 Rear manual hitch, amortized
 Rear coupling for second trailer
 Tipping system with cut-off valve
 Three side tipping cylinder
 Side walls made of PRONAR profiles 600mm with rim 70mm
 Rear mudguards
 Rear grain damper, locked in the rear wall
 Wheel chocks + racks (2 pcs)
 Ladder and steps facilitating the access to the loading box
 Chemically hardened painting materials , UV-resistant
 Tension slat of the sidewalls
 Chassis color red RAL3000 PRONAR
 Sidewalls color green RAL6010 PRONAR
 Rear lamps with protective grating
 Loading box adapted to transport europallets

Additional equipment (optional):

Drawbar V type: rigid with Ø50 towing eye
 Drawbar Y type: rigid with Ø40 towing eye
 Braking system: double line pneumatic with automatic braking speed controller
 Rolled tarpaulin with frame
 Operator's platform
 Sidewalls extension made of profile PF 600mm with rim 70mm
 Middle sidewall extension made of profile PF 600mm
 Springs supporting of opening side walls
 Grain chute spout
 Rear automatic hitch UNIMAR
 Rear automatic hitch RO*400A4600
 Tires 385/55 R22.5
 Tires 385/55 R22.5 RE
 Tires 385/65 R22.5
 Spare wheel (separately) 385/55 R22.5 RE
 Spare wheel (separately) 385/55 R22.5
 Spare wheel (separately) 385/65 R22.5 RE
 Spare wheel (separately) 385/65 R22.5
 Front mudguards
 Additional rear plastic mudguards
 Toolbox
 Side underrun protection
 The chute along the entire width of the trailer
 Slow-moving vehicle triangle
 Auger for unloading grain with efficiency of 30 t/h

PT612 Standard equipment:

Loading box with universal system of sidewalls opening
Loading box with universal system of sidewalls opening
Reinforced floor pan with walls central locking mechanism
Drawbar V type: rigid with Ø40 towing eye
Braking system: single line, double line pneumatic or hydraulic
Braking system: single line, double line pneumatic or hydraulic
Axles 60 km/h
Crank handbrake
Lighting system 12 V with rear electrical socket
Rear manual hitch, amortized
Rear coupling for second trailer
Tipping system with cut-off valve
Three side tipping cylinder
Side walls made of PRONAR profiles 600mm with rim 60mm
Rear mudguards
Rear grain damper, locked in the rear wall
Wheel chocks + racks (2 pcs)
Chemically hardened painting materials , UV-resistant
Ladder and steps facilitating the access to the loading box
Tension slat of the sidewalls
Chassis color red RAL3000 PRONAR
Sidewalls color green RAL6010 PRONAR
Rear lamps with protective grating
Loading box adapted to transport europallets
PF600 mm + 800 mm profile sidewalls

Additional equipment (optional) :

Drawbar V type: rigid with Ø50 towing eye
Drawbar Y type: rigid with Ø40 towing eye
Load volume:
Rolled tarpaulin with frame
Operator's platform
Sidewalls extension made of profile PF 800mm with rim 60mm
Sidewall extension made of profile PF600 mm with rim 60mm
Springs supporting of opening side walls
Grain chute spout
Tires 385/55 R22.5
Tires 385/55 R22.5 RE
Tires 385/65 R22.5
Rear automatic hitch UNIMAR
Rear automatic hitch RO*400A4600
Spare wheel (separately) 385/55 R22.5 RE
Spare wheel (separately) 385/55 R22.5
Spare wheel (separately) 385/65 R22.5 RE
Spare wheel (separately) 385/65 R22.5
Front mudguards
Additional rear plastic mudguards
Toolbo x
Side underrun protection
The chute along the entire width of the trailer
Slow-moving vehicle triangle
Auger for unloading grain with efficiency of 30 t/h

THREE AXLE TRAILER

T780 Standard equipment:

V-type drawbar rigid to couple with a 40 mm towing eye
Axles for 60km/h
Braking system: double line pneumatic with automatic braking speed controller or hydraulic
Crank handbrake
Lighting system
Tipping system with cut-off valve
Two telescopic servo-motors of 3-side tipping system
Sidewalls made of profile PF 800+600 with middle post
Central locking mechanism
Rear grain damper
Rear electrical connection
Springs facilitating opening sidewalls
Plastic mudguards
Ladder
Chemically hardened painting materials , UV-resistant
Wheel chocks + racks
Chassis color red RAL 3000 PRONAR
Sidewalls color orange RAL 6010 PRONAR
Additional equipment (optional):
Y-type drawbar with rigid 40mm eye
Rear couplings for second trailer
Operator's platform
Rolled cover complete with frame
Sidewall extensions 800mm (instead of 600mm)
Left- or right-sidewall grain chute (1 piece)
Toolbox
Side under-ride guards
Grain slide system (side and rear pipes)
Grain chute spout
Rear automatic hitch UNIMAR
Rear automatic hitch ROCKINGER 400A4600
Spare wheel beam**
Tires 385/65R22.5
Wheel with Tires 425/65 R22.5 ET= -30
Wheel with Tires 550/45 R22.5 Flotation
Spare wheel (separately) 385/65 R22.5 (15 R22.5) RE
Spare wheel (separately) 385/65 R22.5 (15 R22.5)
Spare wheel (separately) 425/65 R22.5
Spare wheel (separately) 550/45 R22.5 Flotation
Slow-moving vehicle triangle
A grain unloading auger with 30 t/h output

TANDEM TYPE TRAILER

T663/1 Standard equipment:

Loading case with universal system of opening walls
Reinforced floor panel with Central locking mechanism
Type of chassis: Rectangular with closed profiles
Universal rigid drawbar to connect with the lower or the upper hitch of the tractor
Drawbar towing hitch: with fixed Ø50 towing eye
Drawbar towing hitch: with fixed Ø50 towing eye
Drawbar support: hydraulic supporting leg (scissor)
Drawbar support: hydraulic supporting leg (scissor)
Drawbar support: hydraulic supporting leg (scissor)
Drawbar support: hydraulic supporting leg (scissor)
Braking system: single or double pneumatic line
Parking brake with manual crank
Lighting installation 12V with rear electrical outlet
Coiled connecting cable lighting system
Tipping system with cut-off valve
Telescopic servo-motor of 3-side tipping system
Sidewalls and extensions made of profile PF600mm+600mm, 70 mm from the rim, with hinges and locks
Closed spaces, walls protected by laser weld
Sidewalls fastening string
Convertible chute grain, locking in the rear wall
Rear mudguards
Two wheel chocks placed in galvanized pockets
Two-component paints chemically hardened for high durability and resistance to UV
Chassis color red RAL 3000 PRONAR
Sidewalls color green RAL 6010 PRONAR
Ladder and steps onboard to facilitate access to tonneau
The trapezium shape of the box body (chest expands by 50 mm in the rearward direction)
Additional equipment (optional) :
Drawbar towing hitch: with towing eye Ø40
Additional Sidewalls extensions made of profile PF600mm
Braking system: double line pneumatic with ALB
Lighting installation on the sides
Rolled canvas cover with frame
Operator's platform
The back chute with a width-like damper
Springs facilitating opening the sides
Manual rear hitch, amortized
Automatic rear hitch UNIMAR
Rear automatic hitch AH 31H-4
Rear automatic hitch AH 38H-4
Rear couplings for second trailer
Spare wheel holder
Wheels with tires 385/55 R22,5
Wheels with tires 385/55 R22,5 Regenerowane
Wheels with tires 500/50-17
Spare wheel (separately) 500/50-17
Spare wheel (separately) 15.0/70-18
Spare wheel (separately) 385/55 R22.5
Spare wheel (separately) 385/55 R22.5 regenerated
Side security (protectors)JEST W KARCIE
Additional plastic front fenders - the wheels of a wheelset tandem
Slow-moving vehicle triangle
A grain unloading auger with 30 t/h output

T663/2 Standard equipment:

Loading case with universal system of opening walls
 Reinforced floor panel with Central locking mechanism
 Type of chassis: Rectangular with closed profiles with rigid drawbar
 Universal rigid drawbar to connect with the lower or the upper hitch of the tractor
 Drawbar towing hitch: with fixed Ø50 towing eye
 Drawbar towing hitch: with fixed Ø50 towing eye
 Type the drawbar support: hydraulic scissor lift with movable foot support and hydraulic protection lock
 Braking system: single or double pneumatic line
 Crank handbrake
 Lighting installation 12V with rear electrical outlet
 Coiled connecting cable lighting system
 Tipping system with cut-off valve
 Telescopic servo-motor of 3-side tipping system
 Sidewalls and extensions made of profile PF500mm+500mm, 70 mm from the rim, with hinges and locks
 Closed spaces, walls protected by laser weld
 Sidewalls fastening string
 Convertible chute grain, locking in the rear wall
 Rear mudguards
 Two wheel chocks placed in galvanized pockets
 Two-component paints chemically hardened for high durability and resistance to UV
 Chassis color red RAL 3000 PRONAR
 Sidewalls color green RAL 6010 PRONAR
 Ladder and steps onboard to facilitate access to tonneau
 The trapezium shape of the box body (chest expands by 50 mm in the rearward direction)

Additional equipment (optional):

Drawbar hitch: fixed with towing eye Ø40 mm
 Silo-type sidewalls extensions with hydraulically driven tailgate (only on 400/60 – 15,5 tires)
 Additional extensions made of profile PF500mm
 Braking system: double line pneumatic with ALB
 Manufactured with pneumatic brake for 40 km/h (DMC=10000kg)
 Clearance lighting
 Rolled cover complete with frame
 Operator's platform
 Grain chute spout
 Springs facilitating opening the sides
 Rear manual hitch, amortized
 Rear couplings for second trailer
 Base for wheel axles 400/60-15.5 kpl.
 Tires 12.5/80 – 15.3
 Tires 14.0/65 - 16
 Tires 400/60-15,5 (Base for wheel axles)
 Spare wheel (separately) 11.0/65-16
 Spare wheel (separately) 12.5/80-15.3
 Spare wheel (separately) 14.0/65-16
 Spare wheel (separately) 400/60-15.5
 Slow-moving vehicle triangle
 A grain unloading auger with 30 t/h output

T663/3 Standard equipment:

Loading case with universal system of opening walls
 Reinforced floor panel with Central locking mechanism
 Type of chassis: Rectangular with closed profiles with rigid drawbar
 Universal rigid drawbar to connect with the lower or the upper hitch of the tractor
 Drawbar towing hitch: with fixed Ø50 towing eye
 Drawbar towing hitch: with fixed Ø50 towing eye
 Type the drawbar support: hydraulic scissor lift with movable foot support and hydraulic protection lock
 Braking system: single or double pneumatic line
 Crank handbrake
 Lighting installation 12V with rear electrical outlet
 Coiled connecting cable lighting system
 Tipping system with cut-off valve
 Telescopic servo-motor of 3-side tipping system
 Sidewalls and extensions made of profile PF500mm+500mm, 70 mm from the rim, with hinges and locks
 Closed spaces, walls protected by laser weld
 Sidewalls fastening string
 Convertible chute grain, locking in the rear wall
 Rear mudguards
 Two wheel chocks placed in galvanized pockets
 Two-component paints chemically hardened for high durability and resistance to UV
 Chassis color red RAL 3000 PRONAR
 Sidewalls color green RAL 6010 PRONAR
 Ladder and steps onboard to facilitate access to tonneau
 The trapezium shape of the box body (chest expands by 50 mm in the rearward direction)

Additional equipment (optional) :

Drawbar hitch: fixed with towing eye Ø40 mm
 Silo-type sidewalls extensions with hydraulically driven tailgate
 Additional extensions made of profile PF600mm
 Braking system: double line pneumatic with ALB
 Clearance lighting
 Rolled cover complete with frame
 Operator's platform
 Grain chute spout
 Springs facilitating opening the sides
 Rear manual hitch, amortized
 Rear couplings for second trailer
 Base for wheel axles 400/60-15.5 kpl.
 Tires 385/65 R22,5
 Tires 500/45-22,5
 Tires 500/45 R22,5
 Spare wheel (separately) 11.0/65-16
 Spare wheel (separately) 12.5/80-15.3
 Spare wheel (separately) 14.0/65-16
 Spare wheel (separately) 400/60-15.5
 Slow-moving vehicle triangle
 A grain unloading auger with 30 t/h output

T663/4 Standard equipment:

Loading case with universal system of opening walls
 Reinforced floor panel with Central locking mechanism
 Type of chassis: Rectangular with closed profiles with rigid drawbar
 Universal rigid drawbar to connect with the lower or the upper hitch of the tractor
 Drawbar towing hitch: with fixed Ø50 towing eye
 Drawbar towing hitch: with fixed Ø50 towing eye
 Type the drawbar support: hydraulic scissor lift with movable foot support and hydraulic protection lock
 Braking system: single or double pneumatic line
 Crank handbrake
 Lighting installation 12V with rear electrical outlet
 Coiled connecting cable lighting system
 Tipping system with cut-off valve
 Telescopic servo-motor of 3-side tipping system
 Sidewalls and extensions made of profile PF600mm+600mm, 70 mm from the rim, with hinges and locks
 Closed spaces, walls protected by laser weld
 Sidewalls fastening string
 Convertible chute grain, locking in the rear wall
 Rear mudguards
 Two wheel chocks placed in galvanized pockets
 Two-component paints chemically hardened for high durability and resistance to UV
 Chassis color red RAL 3000 PRONAR
 Sidewalls color green RAL 6010 PRONAR
 Ladder and steps onboard to facilitate access to tonneau
 The trapezium shape of the box body (chest expands by 50 mm in the rearward direction)

Additional equipment (optional):

Drawbar hitch: fixed with towing eye Ø40 mm
 Additional extensions made of profile PF600mm
 Braking system: double line pneumatic with ALB
 Clearance lights
 Cover complete with frame
 Operator's platform
 Grain chute spout
 Springs facilitating opening the sides
 Rear couplings for second trailer
 Rear manual hitch, amortized
 Rear automatic hitch UNIMAR
 Rear automatic hitch AH 31H-4
 Rear automatic hitch AH 38H-4
 Wheel with tire 385/65R22,5
 Wheel with tire 500/45-22,5
 Wheel with tire 500/45R22,5
 Spare wheel (separately) 385/65 R22.5 (15 R22.5)
 Spare wheel (separately) 385/65 R22.5 (15 R22.5) Regenerowane
 Spare wheel (separately) 500/45-22,5
 Spare wheel (separately) 500/45R22,5
 Side security (protectors)
 Additional plastic front fenders - the wheels of a wheelset tandem
 Slow-moving vehicle triangle
 A grain unloading auger with 30 t/h output

T683 Standard equipment:

Loading case with universal system of opening walls
Reinforced floor panel with Central locking mechanism
The chassis frame welded using closed rectangular profiles made of S355 steel
Type the drawbar support: hydraulic scissor lift with movable foot support and hydraulic protection lock
Universal rigid drawbar to connect with the lower or the upper hitch of the tractor
Drawbar towing hitch: with fixed Ø50 towing eye
Drawbar towing hitch: with fixed Ø50 towing eye
Axles on 60 km/h
Braking system: single or double pneumatic or hydraulic line
Crank handbrake
Lighting installation 12V with rear electrical outlet
Coiled connecting cable lighting system
Tipping system with cut-off valve
Telescopic servo-motor of 3-side tipping system
The side walls shared with central pillar
Sidewalls and extensions made of profile PF800mm+600mm, 70 mm from the rim, with hinges and locks
Closed spaces, walls protected by laser weld
Sidewalls fastening string
Convertible chute grain, locking in the rear wall
Foldable rear bumper
Folding beam lighting with grilles protecting the lamp from damage
Handle with hanger hydraulic hoses for fittings of plug to the tractor
Two wheel chocks placed in galvanized pockets
Two-component paints chemically hardened for high durability and resistance to UV
Chassis color red RAL 3000 PRONAR
Sidewalls color green RAL 6010 PRONAR

Rear mudguards
Ladder and steps onboard to facilitate access to tonneau

Additional equipment (optional) :

Drawbar towing hitch: fixed with towing eye Ø40mm to connect with the lower or the upper hitch of the tractor
Drawbar towing hitch: rigid ball-type K80mm
Extensions made of profile PF600mm
Sidewalls extensions made of profile PF800mm instead of standard sidewall extensions PF600mm
No shared walls and on extension (without the post side)
The springs supporting opening of the side walls
Braking system: double line pneumatic with ALB
Operator's platform
Rolled cover complete with frame
Grain chute spout
Rear automatic hitch UNIMAR
Rear automatic hitch RO*400A5100
Rear couplings for second trailer
Sidewalls hydraulic locking system
Side under-ride guards
Tires 385/65R22,5
Tires 425/65R22,5
Tires 445/65R22,5
Tires 445/65R22,5 (18R22,5) Regenerowane
Tires 550/60-22,5
Tires 500/60R22,5 JEST W KARCIE
Tires 550/45 R22,5
Tires 560/60 R22,5
Tires 560/45 R22,5 JEST W KARCIE
Spare wheel (separately) 385/65 R22.5
Spare wheel (separately) 385/65 R22.5 Regenerated
Spare wheel (separately) 425/65 R22.5
Spare wheel (separately) 445/65 R22.5
Spare wheel (separately) 445/65 R22.5 Regenerated
Spare wheel (separately) 550/60-22.5
Spare wheel (separately) 550/45 R22.5
Spare wheel (separately) 560/60 R22.5
Spare wheel (separately) 500/60R22,5
Spare wheel (separately) 560/45 R22,5
Slow-moving vehicle triangle
A grain unloading auger with 30 t/h output

T683U Standard equipment:

Loading case with universal system of opening walls
Platform equipped with a special sealing system
Replaceable rubber seals, placed in slots at the floor plate, with three sides of the floor, ensuring the tightness of the trailer (especially useful when transporting of rape) and removable adhesive EPDM gaskets for other routes wall, turn and floor plate.
Reinforced floor panel with Central locking mechanism
The construction of container suitable for transport EUROPALET
Type of chassis: Rectangular with closed profiles
Drawbar support: hydraulic supporting leg (scissor)
Drawbar support: hydraulic supporting leg (scissor)
Drawbar support: hydraulic supporting leg (scissor)
Drawbar support: hydraulic supporting leg (scissor)
Axles on 60 km/h
Universal rigid drawbar to connect to the lower or upper hitch of the tractor, amortized with the rubber springs
Drawbar towing hitch: rotary with towing eye 50mm
Braking system: single or double pneumatic or hydraulic line
Crank handbrake
Lighting installation 12V with rear electrical outlet
Coiled connecting cable lighting system
Tipping system with cut-off valve
Telescopic servo-motor of 3-side tipping system
The side walls shared with central pillar
Sidewalls and extensions made of profile PF600mm+600mm, 70 mm from the rim, with hinges and locks
Closed spaces, walls protected by laser weld
Convertible chute grain, locking in the rear wall
Handle with hanger hydraulic hoses for fittings of plug to the tractor
Two wheel chocks placed in galvanized pockets
Two-component paints chemically hardened for high durability and resistance to UV
Chassis color red RAL 3000 PRONAR
Sidewalls color green RAL 6010 PRONAR
Rear mudguards
Ladder and steps onboard to facilitate access to tonneau
Side marker lights
Folding beam lighting with grilles protecting the lamp from damage
The rear cover, EC type-approval, folding

Additional equipment (optional) :

Rigid drawbar hitch eye Ø40mm according to DIN 11026 to connect with the upper hitch tractor
Attach rigid drawbar eye ball K80mm to connect with the ball hitch of the tractor
Extensions made of profile PF600mm
Sidewalls extensions made of profile PF800mm instead of standard sidewall extensions PF600mm
Braking system: double line pneumatic with ALB
Combined Brake system (pneumatic two-wire + with electric hydraulic safety valve and regulator of braking forces)
Operator's platform
Rolled cover complete with frame
Grain chute spout
Toolbox
Rear automatic hitch UNIMAR
Rear automatic hitch RO*400A5100
Rear couplings for second trailer
Side under-ride guards
Tires 385/65R22,5
Tires 425/65R22,5
Tires 445/65R22,5
Tires 445/65R22,5 (18R22,5) Regenerated
Tires 550/60-22,5
Tires 500/60R22,5
Tires 550/45 R22,5
Tires 560/60 R22,5
Tires 560/45 R22,5
Spare wheel (separately) 385/65 R22.5
Spare wheel (separately) 385/65 R22.5 Regenerated
Spare wheel (separately) 425/65R22,5
Spare wheel (separately) 445/65R22,5
Spare wheel (separately) 445/65R22,5 (18R22,5) Regenerated
Spare wheel (separately) 550/60-22,5
Spare wheel (separately) 500/60R22,5
Spare wheel (separately) 550/45 R22,5
Spare wheel (separately) 560/60 R22,5
Spare wheel (separately) 560/45 R22,5
Slow-moving vehicle triangle
A grain unloading auger with 30 t/h output

T683P Standard equipment:

Loading case with universal system of opening walls
Reinforced floor panel with Central locking mechanism
The chassis frame welded using closed rectangular profiles made of S355 steel
Drawbar support: hydraulic supporting leg (scissor)
Drawbar support: hydraulic supporting leg (scissor)
Drawbar support: hydraulic supporting leg (scissor)
Drawbar support: hydraulic supporting leg (scissor)
Universal rigid drawbar to connect with the lower or the upper hitch of the tractor
Drawbar towing hitch: with fixed Ø50 towing eye
Drawbar towing hitch: with fixed Ø50 towing eye
Axles on 60 km/h
Braking system: single or double pneumatic or hydraulic line
Crank handbrake
Lighting installation 12V with rear electrical outlet
Coiled connecting cable lighting system
Tipping system with cut-off valve with wide ropes
Telescopic servo-motor of 3-side tipping system
Handle with hanger hydraulic hoses for fittings of plug to the tractor
The walls of plywood on both sides foiled gr: 18 mm, with a rim made from aluminum profiles, with hinges and locks
The wall left, with central pillars, not divided, 1540mm height, tilt and opening system
Right wall with the central post, shared, 800mm +740 mm in height, the system - tilt
The rear wall, 1540mm height, not divided, 1540mm height, the system-tilt
Convertible chute grain, locking in the rear wall
Two wheel chocks placed in galvanized pockets
Rack cover
Mudguards Rear Wheel - Plastic
Two-component paints chemically hardened for high durability and resistance to UV
Chassis color red RAL 3000 PRONAR
The colors of the walls - plywood foiled - dark brown
Ladder and steps onboard to facilitate access to tonneau
Folding beam lighting with grilles protecting the lamp from damage
The rear cover, EC type-approval, folding
The construction of container suitable for transport EUROPALET

Additional equipment (optional) :

Rigid drawbar hitch eye Ø40mm according to DIN 11026 to connect with the upper hitch tractor
Attach rigid drawbar eye ball K80mm to connect with the ball hitch of the tractor
Braking system: double line pneumatic with ALB
Operator's platform
Rolled canvas cover with frame
Grain chute spout
Three baffles grain chute, locked in the rear wall
Rear automatic hitch UNIMAR
Rear automatic hitch RO*400A5100
Rear couplings for second trailer
Side under-ride guards
Tires 385/65R22,5
Tires 425/65R22,5
Tires 445/65R22,5
Tires 445/65R22,5 (18R22,5) Regenerowane
Tires 500/60R22,5 JEST W KARCIE
Tires 550/60-22,5
Tires 550/45 R22,5
Tires 560/60 R22,5
Tires 560/45 R22,5 JEST W KARCIE
Spare wheel (separately) 385/65 R22.5
Spare wheel (separately) 385/65 R22.5 Regenerated
Spare wheel (separately) 425/65 R22.5
Spare wheel (separately) 445/65 R22.5
Spare wheel (separately) 445/65 R22.5 Regenerated
Spare wheel (separately) 500/60R22,5
Spare wheel (separately) 550/60-22.5
Spare wheel (separately) 550/45 R22.5
Spare wheel (separately) 560/60 R22.5
Spare wheel (separately) 560/45 R22,5
Slow-moving vehicle triangle
A grain unloading auger with 30 t/h output



T683H Standard equipment:

Loading case with universal system of opening walls
 Reinforced floor panel with Central locking mechanism
 The chassis frame welded using closed rectangular profiles made of S355 steel
 Drawbar support: hydraulic supporting leg (scissor)
 Drawbar support: hydraulic supporting leg (scissor)
 Drawbar support: hydraulic supporting leg (scissor)
 Universal rigid drawbar to connect with the lower or the upper hitch of the tractor
 Drawbar towing hitch: with fixed Ø50 towing eye
 Drawbar towing hitch: with fixed Ø50 towing eye
 Braking system: single or double pneumatic or hydraulic line
 Crank handbrake
 Lighting installation 12V with rear electrical outlet
 Coiled connecting cable lighting system
 Tipping system with cut-off valve
 Telescopic servo-motor of 3-side tipping system
 The side walls shared with central pillar
 Walls with the rubber seal
 Walls from PF profiles
 Closed spaces, walls protected by laser weld
 Left wall, 1700mm high, lifted hydraulically
 Right wall, bottom 800mm-tilt system
 Rear wall, bottom 800mm-tilt system
 Convertible chute grain, locking in the rear wall
 Two wheel chocks placed in galvanized pockets
 Two-component paints chemically hardened for high durability and resistance to UV
 Chassis color red RAL 3000 PRONAR
 Sidewalls color green RAL 6010 PRONAR
 Rear mudguards
 Ladder and steps onboard to facilitate access to tonneau
 Side marker lights
 The construction of container suitable for transport EUROPALET
 Folding beam lighting with grilles protecting the lamp from damage
 Axles on 60 km/h
 The rear cover, EC type-approval, folding
Additional equipment (optional) :
 Drawbar hitch: fixed with towing eye Ø40 mm
 Drawbar towing hitch: rigid ball-type K80mm (2 tones)
 Braking system: double line pneumatic with ALB
 500mm raiser for the green forage on the right side of the trailer
 500mm raiser for the green forage on the right side of the trailer
 Operator's platform
 Rolled canvas cover with frame
 Rear automatic hitch UNIMAR
 Rear automatic hitch RO*400A5100
 Rear couplings for second trailer
 Side under-ride guards
 Tires 385/65R22,5
 Tires 425/65R22,5
 Tires 445/65R22,5
 Tires 445/65R22,5 (18R22,5) Regenerated
 Tires 550/60-22,5
 Tires 550/45 R22,5
 Tires 560/60 R22,5
 Tires 500/60R22,5
 Tires 560/45 R22,5
 Spare wheel (Separately) 385/65 R22.5
 Spare wheel (Separately) 385/65 R22.5 Regenerated
 Spare wheel (Separately) 425/65 R22.5
 Spare wheel (Separately) 445/65 R22.5
 Spare wheel (Separately) 445/65 R22.5 Regenerated
 Spare wheel (Separately) 550/60-22.5
 Spare wheel (Separately) 550/45 R22.5
 Spare wheel (Separately) 560/60 R22.5
 Spare wheel (Separately) 500/60R22,5
 Spare wheel (Separately) 560/45 R22,5
 Slow-moving vehicle triangle
 A grain unloading auger with 30 t/h output

PT510 Standard equipment:

Loading case with universal system of opening walls
 Reinforced floor panel with Central locking mechanism
 Chassis type: Rectangular with closed profiles with rigid drawbar
 Universal rigid drawbar to connect with the lower or the upper hitch of the tractor
 Drawbar towing hitch: with fixed Ø50 towing eye
 Drawbar towing hitch: with fixed Ø50 towing eye
 Drawbar support: hydraulic supporting leg (scissor)
 Drawbar support: hydraulic supporting leg (scissor)
 Drawbar support: hydraulic supporting leg (scissor)
 Drawbar support: hydraulic supporting leg (scissor)
 Two-wire pneumatic brake system
 Axles on 60 km/h
 Crank handbrake
 Lighting installation 12V with rear electrical outlet
 Installation of lighting from the side reflectors and lights
 Coiled connecting cable lighting system
 Hydraulic tipping tripartite control valve and shut-off valve
 Telescopic servo-motor of 3-side tipping system
 Rear couplings for second trailer
 Sidewalls and extensions made of profile PF600mm+600mm, 70 mm from the rim, with hinges and locks
 Closed spaces, walls protected by laser weld
 Side walls reinforcement, strips tensioned
 Side strips tensioned, reinforcement raiser
 Convertible chute grain, locking in the rear wall
 Rear mudguards
 Two wheel chocks placed in galvanized pockets
 Support service the load carrying body
 Ladder and steps onboard to facilitate access to tonneau
 Two-component paints chemically hardened for high durability and resistance to UV
 Chassis color red RAL 3000 PRONAR
 Sidewalls color green RAL 6010 PRONAR
 The construction of container suitable for transport EUROPALET
 Folding beam lighting with grilles protecting the lamp from damage
Additional equipment (optional) :
 Drawbar hitch: rigid with towing eye 40 mm
 Type of drawbar hitch: ball type K80 mm
 Sidewall extensions made of profile PF 600mm
 Braking system: double line pneumatic with ALB
 Hydraulic Brake system
 Rolled canvas cover with frame
 Operator's platform
 Rynna do szybra zsykowego
 Front mudguards
 Side protectors (covers)
 Springs facilitating opening the side walls
 Rear manual hitch MH 31H-4
 Rear automatic hitch AH 31H-4
 Rear automatic hitch AH 38H-4
 Tires 385/65 R22,5
 Tires 385/55 R22,5 Regenerated
 Tires 385/55 R22,5
 Tires 500/45-22,5
 Tires 500/45R22,5
 Spare wheel (Separately) 385/65 R22,5 Regenerated
 Spare wheel (Separately) 385/65 R22,5
 Spare wheel (Separately) 385/55 R22.5
 Spare wheel (Separately) 385/55 R22.5 Regenerated
 Spare wheel (Separately) 500/45-22,5
 Spare wheel (Separately) 500/45R22,5
 Slow-moving vehicle triangle
 A grain unloading auger with 30 t/h output

PT512 Standard equipment:

Loading case with universal system of opening walls
 Reinforced floor panel with Central locking mechanism
 Chassis type: Rectangular with closed profiles with rigid drawbar
 Universal rigid drawbar to connect with the lower or the upper hitch of the tractor
 Drawbar towing hitch: rotary with towing eye Ø50mm
 Drawbar support: hydraulic leg scissor-type
 Braking system: double line pneumatic
 Axles on 60 km/h
 Crank handbrake
 Lighting installation 12V with rear electrical outlet
 Installation of lighting from the side reflectors and lights
 Coiled connecting cable lighting system
 Hydraulic tipping tripartite control valve and shut-off valve
 Telescopic servo-motor of 3-side tipping system
 Rear couplings for second trailer
 Sidewalls and extensions made of profile PF600mm+800mm, 60 mm from the rim, with hinges and locks
 Closed spaces, walls protected by laser weld
 Side walls reinforcement, strips tensioned
 Side strips tensioned, reinforcement raiser
 Convertible chute grain, locking in the rear wall
 Rear mudguards
 Two wheel chocks placed in galvanized pockets
 Support service the load carrying body
 Ladder and steps onboard to facilitate access to tonneau
 Two-component paints chemically hardened for high durability and resistance to UV
 Chassis color red RAL 3000 PRONAR
 Sidewalls color green RAL 6010 PRONAR
 The construction of container suitable for transport EUROPALET
 Folding beam lighting with grilles protecting the lamp from damage
Additional equipment (optional) :
 Drawbar hitch: rigid with towing eye 40 mm
 Type of drawbar hitch: ball type K80 mm
 Sidewall extensions made of profile PP 600mm
 Raiser profile 600mm instead of 800mm extensions profile
 Hydraulic Brake system
 Braking system: double line pneumatic with ALB
 Rolled canvas cover with frame
 Operator's platform
 Slide to the chute damper
 Springs facilitating opening the side walls
 Front mudguards
 Side protectors (covers)
 Rear manual hitch MH 31H-4
 Rear automatic hitch AH 31H-4
 Rear automatic hitch AH 38H-4
 Tires 385/65 R22,5
 Tires 385/55 R22,5 Regenerowane
 Tires 385/55 R22,5
 Tires 500/45R22,5
 Spare wheel (Separately) 385/65 R22,5 Regenerated
 Spare wheel (Separately) 385/65 R22,5
 Spare wheel (Separately) 385/55 R22.5
 Spare wheel (Separately) 385/55 R22.5 Regenerated
 Spare wheel (Separately) 500/45R22,5
 Slow-moving vehicle triangle
 A grain unloading auger with 30 t/h output

MONOCOQUE TRAILER

T669 Standard equipment :

Monocoque loading box
Hydraulically lifted tailgate with automatic pressing system
Chassis frame made of rectangular closed profiles
Drawbar- universal rigid to couple with lower or upper hitch of the tractor
Drawbar support: hydraulic scissor-type with movable leg and security hydraulic lock
Drawbar towing hitch- rotary with Ø50mm towing eye
Tandem suspension on parabolic springs
Rigid axles equipped in drum brakes 400x120
Braking system: single line, double line pneumatic or hydraulic
Braking system: single line, double line pneumatic or hydraulic
Crank handbrake
Rear mudguards made of plastic
Wheel chocks + racks (2 pcs)
Lighting system 12 V with side clearance lights and rear electrical socket
Rear protective bumper, folded
Rear lamps with protective grating
Hydraulic cables holder with a hanger for tractor connectors
Tipping system with automatic cut-off valve and safety strings
Folded ladder and steps facilitating the access to the loading box
Windows on the front wall of the loading box
Rear grain damper, locked in the rear wall
Sidewall extensions height 580mm made of steel 2mm thickness
Chemically hardened painting materials , UV-resistant
Chassis color red RAL3000 PRONAR
Sidewalls color green RAL 6010 PRONAR

Additional equipment (optional) :

Drawbar towing hitch: rigid with Ø40mm towing eye in accordance to DIN11026 to couple with upper hitch of the tractor
Drawbar towing hitch: rigid ball-type K80mm to couple with lower hitch of the tractor
Drawbar- amortized, with folded leg or telescopic with a gear
Passively steered rear axle with hydraulic turning blockade
Braking system: double line pneumatic with automatic (ALB) braking speed controller
Rear sockets for hydraulic installation and brakes for second trailer
Rear protective bumper homologated according to directive WE type, folded
Grain chute spout
Sidewall extensions height 580mm made of steel 2mm thickness and mesh window 30x30 on the extension of front wall
Sidewall extensions height 1000mm (instead of 580mm) increasing load volume up to 27,7m³, made of steel 2mm thickness and folded mesh window 30x30 on the extension of front wall
Sidewall extensions height 1000mm (instead of 580mm) increasing load volume up to 27,7m³, made of steel 2mm thickness and folded mesh window 30x30 on the extension of front wall
Sidewall extensions height 1000mm (instead of 580mm) increasing load volume up to 27,7m³, made of steel 2mm thickness and folded mesh window 30x30 on the extension of front wall
Rear automatic hitch UNIMAR
Rear automatic hitch RO*400A4600
Operator's platform for side walls extensions with height 580mm
Tarpaulin with frame for side walls extensions with height 580mm
Front mudguards
Side underrun protection
Toolbox
Tires 385/65R22.5 (15R22.5);
Tires 425/65R22.5 (16.5R22.5);
Tires 445/65R22.5 (18R22.5);
Tires 445/65R22.5 (18R22.5) Regenerated:
Tires 500/60 R22.5;
Tires 550/60-22.5;
Tires 560/60 R22.5;
Tires 600/50-22.5- the width of the trailer exceeds 2550mm:
Tires 600/50-R22.5- the width of the trailer exceeds 2550mm:
Tires 600/55-22.5- the width of the trailer exceeds 2550mm:
Spare wheel (separately) 385/65 R22.5 (15 R22.5) Regenerated
Spare wheel (separately) 385/65 R22.5 (15 R22.5)
Spare wheel (separately) 425/65 R22.5;
Spare wheel (separately) 445/65 R22.5 regenerated:
Spare wheel (separately) 445/65 R22.5;
Spare wheel (separately) 500/60 R22.5;
Spare wheel (separately) 550/60-22.5;
Spare wheel (separately) 560/60 R22.5;
Spare wheel (separately) 600/55-22.5;
Spare wheel (separately) 600/50-22.5;
Spare wheel (separately) 600/50 R22.5;
Slow-moving vehicle warning triangle

T669/1 Standard equipment:

Monocoque loading box with two flaps (right side) with central locking mechanism allowing for tipping backward and to the right
Hydraulically lifted tailgate with automatic pressing system
Chassis frame made of rectangular closed profiles
Drawbar- universal rigid to couple with lower or upper hitch of the tractor
Drawbar support: hydraulic scissor-type with movable leg and security hydraulic lock
Drawbar towing hitch- rotary with Ø50mm towing eye
Tandem suspension on parabolic springs
Rigid axles equipped in drum brakes 400x120
Braking system: single line, double line pneumatic or hydraulic
Braking system: single line, double line pneumatic or hydraulic
Crank handbrake
Rear mudguards made of plastic
Rear protective bumper, folded
Rear lamps with protective grating
Wheel chocks + racks (2 pcs)
Lighting system 12 V with side clearance lights and rear electrical socket
Hydraulic cables holder with a hanger for tractor connectors
Tipping system with automatic cut-off valve and safety strings
Folded ladder and steps facilitating the access to the loading box
Windows on the front wall of the loading box
Rear grain damper, locked in the rear wall
Sidewall extensions height 580mm made of steel 2mm thickness
Chemically hardened painting materials , UV-resistant
Chassis color red RAL3000 PRONAR
Sidewalls color green RAL 6010 PRONAR

Additional equipment (optional) :

Drawbar towing hitch: rigid with Ø40mm towing eye in accordance to DIN11026 to couple with upper hitch of the tractor
Drawbar towing hitch: rigid ball-type K80mm to couple with lower hitch of the tractor
Drawbar- amortized, with folded leg or telescopic with a gear
Passively steered rear axle with hydraulic turning blockade
Braking system: double line pneumatic with automatic (ALB) braking speed controller
Rear sockets for hydraulic installation and brakes for second trailer
Rear protective bumper homologated according to directive WE type, folded
Grain chute spout
Sidewall extensions height 580mm made of steel 2mm thickness and mesh window 30x30 on the extension of front wall
Rear automatic hitch UNIMAR
Rear automatic hitch RO*400A4600
Front mudguards
Side underrun protection
Toolbox
Operator's platform for side walls extensions with height 580mm
Tarpaulin with frame for side walls extensions with height 580mm
Tires 385/65 R22.5 (15R22.5);
Tires 425/65 R22.5 (16.5R22.5);
Tires 445/65 R22.5 (18R22.5);
Tires 445/65 R22.5 (18R22.5) Regenerated:
Tires 500/60 R22.5;
Tires 550/60-22.5;
Tires 560/60 R22.5;
Tires 600/50-22.5- the width of the trailer exceeds 2550mm:
Tires 600/50 R22.5- the width of the trailer exceeds 2550mm:
Tires 600/55-22.5- the width of the trailer exceeds 2550mm:
Spare wheel (separately) 385/65 R22.5 (15 R22.5) Regenerated
Spare wheel (separately) 385/65 R22.5 (15 R22.5)
Spare wheel (separately) 425/65 R22.5;
Spare wheel (separately) 445/65 R22.5 Regenerated
Spare wheel (separately) 445/65 R22.5;
Spare wheel (separately) 500/60 R22.5;
Spare wheel (separately) 550/60 -22.5;
Spare wheel (separately) 560/60 R22.5;
Spare wheel (separately) 600/55-22.5;
Spare wheel (separately) 600/50-22.5;
Spare wheel (separately) 600/50 R22.5;
Slow-moving vehicle triangle

T679 Standard equipment:

Monocoque loading box
Hydraulically lifted tailgate with automatic pressing system
Chassis frame made of rectangular closed profiles
Drawbar- universal rigid to couple with lower or upper hitch of the tractor
Drawbar support: hydraulic scissor-type with manual pump and with ball cut-off valve
Drawbar towing hitch- rotary with Ø50 towing eye
Tandem suspension on parabolic springs
Rigid axles equipped in drum brakes 400x80
Braking system: single line, double line pneumatic or hydraulic
Crank handbrake
Rear mudguards made of plastic
Lighting system 12 V with side clearance lights and rear electrical socket
Tipping system with cut-off valve and safety strings
Wheel chocks + racks (2 pcs)
Hydraulic cables holder with a hanger for tractor connectors
Rear protective bumper homologated according to directive 70/221/EWG (in accordance to 2006/20/WE)
Folded ladder and steps facilitating the access to the loading box
Windows on the front wall of the loading box
Rear grain damper, locked in the rear wall
Sidewall extensions height 580mm made of steel 2mm thickness
Chemically hardened painting materials , UV-resistant
Chassis color red RAL3000 PRONAR
Sidewalls color green RAL 6010 PRONAR

Additional equipment (optional):

Drawbar towing hitch: rigid with Ø40mm towing eye in accordance to DIN11026 to couple with upper hitch of the tractor
Drawbar towing hitch: rigid ball-type K80mm to couple with lower hitch of the tractor
Drawbar support- hydraulic straight leg with cut-off valve
Braking system: double line pneumatic with automatic (ALB) braking speed controller
Rear sockets for hydraulic installation and brakes for second trailer
Grain chute spout
Sidewall extensions height 580mm made of steel 2mm thickness and mesh window 30x30 on the extension of front wall
Rear manual hitch, amortized
Rear automatic hitch UNIMAR
Rear automatic hitch RO*400A3600
Tarpaulin with frame and operator's platform for side walls extensions with height 580mm
Side underrun protection
Tires 385/65R22.5
Tires 425/65R22.5 (16.5R22.5)
Tires 500/60 R22.5
Tires 550/45-22.5
Spare wheel (separately) 385/65 R22.5 (15 R22.5) RE
Spare wheel (separately) 385/65 R22.5 (15 R22.5)
Spare wheel (separately) 425/65 R22.5
Spare wheel (separately) 500/60 R22.5
Spare wheel (separately) 550/45-22.5
Slow-moving vehicle triangle

**T700 Standard equipment:**

Monocoque loading box
 Hydraulically lifted tailgate with automatic pressing system
 Chassis frame made of rectangular closed profiles
 Drawbar- universal rigid, amortized by steel leaf springs with height adjustment, to couple with lower or upper hitch of the tractor
 Drawbar towing hitch- rotary with Ø50 towing eye
 Drawbar support: telescopic with 2-section gear
 Tandem suspenssion on parabolic springs
 Rigid axles equipped in drum brakes 400x120 (FAD)
 Braking system: single line, double line pneumatic or hydraulic
 Braking system: single line, double line pneumatic or hydraulic
 Crank handbrake
 Rear protective bumper homologated according to directive WE type, folded
 Rear lamps with protective grating
 Front and rear mudguards made of plastic
 Wheel chocks + racks (2 pcs)
 Lighting system 12 V with side clearance lights and rear electrical socket
 Tipping system with automatic cut-off valve and safety strings
 Folded ladder and steps facilitating the access to the loading box
 Windows on the front wall of the loading box
 Rear grain damper
 Chemically hardened painting materials , UV-resistant
 Chassis color red RAL3000 PRONAR
 Sidewalls color green RAL 6010 PRONAR

T700 Additional equipment (optional):

Drawbar towing hitch: rigid with towing eye Ø40mm/ Ø50mm to couple with upper / lower hitch of the tractor
 Drawbar towing hitch: rigid ball-type K80mm to couple with lower hitch of the tractor
 Drawbar support- hydraulic straight with cut-off valve
 Drawbar support- hydraulic folded leg with cut-off valve
 Bogie axles with leaf springs and rear axle hydraulic blockade
 Passively steered rear axle with hydraulic turning blockade
 Braking system: double line pneumatic with automatic (ALB) braking speed controller
 Rear sockets for hydraulic installation and brakes for second trailer
 A set of steel mudguards-width does not exceeds 2550mm
 Sidewall extensions height 830mm made of steel 2mm thickness and folded mesh window 30x30 on the extension of front wall
 Grain chute spout:
 Rear manual hitch, amortized
 Rear automatic hitch UNIMAR
 Rear automatic hitch RO*400A4600
 Tires 445/65R22,5 (18R22,5)
 Tires 445/65R22,5 (18R22,5)Regenerated
 Tires 600/50 R22,5 - width of the trailer exceeds 2550mm
 Tires 600/55-22,5 - width of the trailer exceeds 2550mm
 Tires 700/50-26.5 - width of the trailer exceeds 2550mm, only with drum brakes 400x140 (ADR)
 Spare wheel (separately) 550/60-22,5
 Spare wheel (separately) 445/65 R22.5 Regenerated
 Spare wheel (separately) 445/65 R22.5
 Spare wheel (separately) 600/50 R22.5
 Spare wheel (separately) 600/55-22.5
 Spare wheel (separately) 700/50-26.5
 Slow-moving vehicle triangle

T700M Standard equipment:

Monocoque loading box
 Hydraulically lifted tailgate with automatic pressing system
 Chassis frame made of rectangular closed profiles
 Drawbar- universal rigid, amortized by steel leaf springs with height adjustment, to couple with lower or upper hitch of the tractor
 Drawbar towing hitch- rotary with Ø50 towing eye
 Drawbar support: telescopic with 2-section gear
 Tandem suspenssion on parabolic springs
 Rigid axles equipped in drum brakes 400x120 (FAD)
 Braking system: single line, double line pneumatic or hydraulic
 Crank handbrake
 Rear protective bumper homologated according to directive WE type, folded
 Rear lamps with protective grating
 Front and rear mudguards made of plastic
 Wheel chocks + racks (2 pcs)
 Lighting system 12 V with side clearance lights and rear electrical socket
 Tipping system with automatic cut-off valve and safety strings
 Folded ladder and steps facilitating the access to the loading box
 Windows on the front wall of the loading box
 Rear grain damper
 Chemically hardened painting materials , UV-resistant
 Chassis color red RAL3000 PRONAR
 Sidewalls color green RAL 6010 PRONAR

T700M Additional equipment (optional):

Drawbar towing hitch: rigid with towing eye Ø40mm/ Ø50mm to couple with upper / lower hitch of the tractor
 Drawbar towing hitch: rigid ball-type K80mm to couple with lower hitch of the tractor
 Drawbar support- hydraulic straight with cut-off valve
 Drawbar support- hydraulic folded leg with cut-off valve
 Bogie axles with leaf springs and rear axle hydraulic blockade
 Passively steered rear axle with hydraulic turning blockade
 Braking system: double line pneumatic with automatic (ALB) braking speed controller
 Rear sockets for hydraulic installation and brakes for second trailer
 A set of steel mudguards-width does not exceeds 2550mm
 Sidewall extensions height 800mm made of steel 2mm thickness and folded mesh window 30x30 on the extension of front wall
 Side underrun protection
 Tarpaulin retractable aside with frame and operator's platform
 Grain chute spout:
 Rear manual hitch, amortized
 Rear automatic hitch UNIMAR
 Rear automatic hitch UNIMAR
 Rear automatic hitch RO*400A4600
 Tires 445/65R22,5 (18R22,5)
 Tires 445/65R22,5 (18R22,5)Regenerated
 Tires 600/50 R22,5 - width of the trailer exceeds 2550mm
 Tires 600/55-22,5 - width of the trailer exceeds 2550mm
 Tires 700/50-26.5 - width of the trailer exceeds 2550mm, only with drum brakes 400x140 (ADR)
 Spare wheel (separately) 550/60-22,5
 Spare wheel (separately) 445/65 R22.5 Regenerated
 Spare wheel (separately) 445/65 R22.5
 Spare wheel (separately) 600/50 R22.5
 Spare wheel (separately) 600/55-22.5
 Spare wheel (separately) 700/50-26.5
 Slow-moving vehicle triangle

T682 Standard equipment:

Monocoque loading box
 Hydraulically lifted tailgate with automatic pressing system
 Chassis frame made of rectangular closed profiles (steel S355)
 Drawbar- universal rigid, amortized by steel leaf springs, to couple with lower or upper hitch of the tractor
 Drawbar towing hitch- rotary with Ø50 towing eye
 Drawbar support: telescopic with 2-section gear
 Tridem suspenssion on parabolic springs with central rigid axle, front and rear axle passively steered with hydraulic turning blockade
 Drum brakes 400x140
 Braking system: single line, double line pneumatic or hydraulic
 Crank handbrake
 Rear protective bumper homologated according to directive WE type, folded
 Rear lamps with protective grating
 Front and rear mudguards made of plastic
 Wheel chocks + racks (2 pcs)
 Lighting system 12 V with side clearance lights and rear electrical socket
 Hydraulic tipping system with own oil tank, pump and electric distributor steered from tractor's cabin
 Telescopic PTO shaft
 Grain damper in a rear wall
 Two tipping cylinders
 Folded ladder and steps facilitating the access to the loading box
 Windows on the front wall of the loading box
 Rear grain damper
 Chemically hardened painting materials , UV-resistant
 Chassis color red RAL3000 PRONAR
 Sidewalls color green RAL 6010 PRONAR

Additional equipment (optional):

Drawbar towing hitch: rigid with Ø40mm towing eye to couple with upper hitch of the tractor
 Drawbar towing hitch: rigid with Ø50mm towing eye to couple with lower hitch of the tractor
 Drawbar towing hitch: rigid ball-type K80mm to couple with lower hitch of the tractor
 Drawbar support- hydraulic straight with cut-off valve
 Drawbar support- hydraulic folded leg with cut-off valve
 Braking system: double line pneumatic with automatic (ALB) braking speed controller
 Rear sockets for hydraulic installation and brakes for second trailer
 Rear grain chute
 Rear automatic hitch UNIMAR
 Rear automatic hitch RO*400A4600
 Extensions height 580mm enlarging load volume to 32m³ made of steel 2mm
 Extensions height 580mm enlarging load volume to 32m³ made of steel 2mm
 Extensions height 700mm enlarging load volume to 35m³ made of steel 2mm
 Extensions height 700mm enlarging load volume to 35m³ made of steel 2mm
 Tires 385/65R22.5
 Tires 425/65R22.5 (16,5R22.5)
 Tires 445/65R22.5 (18R22.5)
 Tires 445/65R22.5 (18R22.5)Regenerated
 Tires 550/60-22.5 - width of the trailer exceeds 2550mm
 Tires 600/50 R22.5 - width of the trailer exceed 2550mm
 Tires 600/55-22.5 - width of the trailer exceed 2550mm
 Spare wheel (separately) 385/65 R22.5 (15 R22.5) RE
 Spare wheel (separately) 385/65 R22.5 (15 R22.5) (15 R22.5)
 Spare wheel (separately) 425/65 R22.5
 Spare wheel (separately) 445/65 R22.5 Regenerated
 Spare wheel (separately) 445/65 R22.5
 Spare wheel (separately) 550/60-22.5
 Spare wheel (separately) 600/55 R22.5
 Spare wheel (separately) 600/55-22.5
 Slow-moving vehicle triangle

TANDEM TYPE DUMP TRAILER

T679/2 Standard equipment:

Monocoque loading box
Hydraulically driven rear flap height 450 mm
Chassis frame made of rectangular profiles steel S355
Universal rigid drawbar to couple with lower or upper hitch of the tractor
Tandem suspension with parabolic springs, rigid axles equipped in drum brake 400x80
Drawbar towing hitch: rotary with Ø50mm towing eye
Drawbar support: hydraulic scissor-like with ball cut-off valve.
Braking system: double or single line pneumatic or hydraulic
Rear mudguards made of plastic
Crank handbrake
Wheel chocks + racks (2pcs)
Lighting system 12 V with side clearance lights and rear electrical socket
Rear lamps with protective grating
Tipping system with cut-off valve and protective fastening
Hydraulic cable holder with a rack for tractor connectors
Chemically hardened painting materials , UV-resistant
Chassis color red RAL3000 PRONAR
Sidewalls color: yellow RAL1007

Additional equipment (optional):

Drawbar: rigid with Ø40mm towing eye to couple with upper hitch of the tractor
Drawbar towing hitch: rigid ball-type K80mm to couple with lower hitch of the tractor
Loading box made of abrasion resistant steel
Additional swinging tailgate to facilitate setting the thickness of unloading bulk materials
Drawbar support: hydraulic straight with cut-off ball valve
Braking system: double line pneumatic with automatic (ALB) braking speed controller
Rear sockets for hydraulic installation and brakes for second trailer
Rear manual hitch, amortized
Rear automatic hitch RO*400A3600
Additional extensions height 800mm, with swinging tailgate, seal, crossbar, ladder with internal steps
Side underrun protections acc to directive 89/297/WE
Tires 385/65R22.5
Tires 425/65R22.5 (16.5R22.5)
Tires 500/60 R225
Tires 550/45-22.5
Spare wheel (separately) 385/65 R22.5 (15 R22.5) RE
Spare wheel (separately) 385/65 R22.5 (15 R22.5)
Spare wheel (separately) 425/65 R22.5
Spare wheel (separately) 500/60 R22.5
Spare wheel (separately) 550/45-22.5
Slow-moving vehicle triangle

T701 Standard equipment:

Monocoque loading box
Hydraulically driven tailgate height 370mm waived to the bottom
Loading capacity permissible by construction 24000kg
Chassis frame made of rectangular closed profiles
Drawbar- universal rigid, amortized by steel leaf springs, to couple with lower or upper hitch of the tractor
Drawbar with rotary towing eye Ø50
Drawbar support: telescopic with 2-section gear
Tandem suspension with parabolic springs, rigid axles equipped in drum brakes 400x120
Braking system: double or single line pneumatic or hydraulic
Crank handbrake
Rear, filed underrun protection homologated according to Directive 70/221/EWG (in accordance with 2006/20/WE)
Rear and front mudguards made of plastic
Wheel chocks + racks (2pcs)
Tipping system with cut-off valve and protective fastening
Lighting system 12 V with side clearance lights and rear electrical socket
Folded ladder and steps facilitating the access to the loading box
Rear lamps with protective grating
Chemically hardened painting materials , UV-resistant
Chassis color red RAL3000 PRONAR
Sidewalls color: yellow RAL1007

Additional equipment (optional):

Drawbar towing hitch: rigid with towing eye Ø40mm/ Ø50mm to couple with upper and lower hitch of the tractor
Drawbar towing hitch: rigid ball-type K80mm
Loading box with internal width 2410 made of abrasion-resisting steel
Additional swinging tailgate to facilitate setting the thickness of unloading bulk materials for loading box of width 2410
Trapezoid loading box 2196mm/2300mm made of normal steel
Trapezoid loading box 2196mm/2300mm made of abrasion resistant steel.
Hydraulically driven tailgate with gullwing rear door equipped with grain dumper - only for loading box with internal width 2300 mm
Drawbar support: hydraulic straight leg with cut-off ball valve
Bogie axles with leaf springs and rear axle hydraulic blockade
Axles with brakes 400x140 [ADR]
Passively steered rear axle with hydraulic turning blockade
Rear sockets for hydraulic installation and brakes for second trailer
Braking system: double line pneumatic with automatic (ALB) braking speed controller
A set of steel mudguards
Rear manual hitch, amortized
Rear automatic hitch UNIMAR
Rear automatic hitch RO*400A4600
Tires 385/65R22.5
Tires 425/65R22.5 (16.5R22.5)
Tires 445/65 R22.5 (18R22.5)
Tires 445/65 R22.5 (18R22.5) Regenerated
Tires 550/60-22.5
Tires 600/50 R22.5-width of the trailer exceeds 2550mm:
Tires 600/55-22.5-width of the trailer exceeds 2550mm:
Tires 700/50-26.5 – width of the trailer exceeds 2550mm, with brakes 400x140 only (ADR)
Spare wheel (separately) 385/65 R22.5 (15 R22.5) RE
Spare wheel (separately) 385/65 R22.5 (15 R22.5) (15 R22.5)
Spare wheel (separately) 425/65 R22.5
Spare wheel (separately) 445/65 R22.5 Regenerated
Spare wheel (separately) 445/65 R22.5
Spare wheel (separately) 550/60-22.5
Spare wheel (separately) 600/55-22.5
Spare wheel (separately) 600/50 R22.5
Spare wheel (separately) 700/50-26.5
Slow-moving vehicle triangle

MANURE SPREADER

N161 Standard equipment:

Universal loading-body
AH21 adapter with 2 horizontal beaters
Drawbar type: rigid to couple with lower hitch of the tractor
Drawbar towing hitch: rotary with towing eye Ø50mm
Drawbar support: straight with folded steel wheel
Control tractor hydraulic distributor
Braking system: double line pneumatic
Crank handbrake
Lighting system 12V
Wheel chocks + racks (2 pcs.)
Front protective mesh
PTO shaft - standard 6x6
Sidewalls, drawbar, axles and conveyor mechanism color: green RAL6010 PRONAR
Adapter, front mesh color: red RAL3000 PRONAR
Additional equipment (optional) :
Braking system: single line pneumatic or hydraulic braking system
Drawbar type: rigid to couple with upper hitch of the tractor
Drawbar towing hitch: rigid with towing eye Ø40mm to couple with upper hitch of the tractor
PTO shaft standard 6x21
PTO shaft wide-angle 6x6
PTO shaft wide-angle 6x21
Spare wheel (separately) 500/50-17
Slow moving vehicle triangle



N162/2 Standard equipment:

Monocoque loading-body
AV40 adapter with 4 vertical beaters
Drawbar type: rigid to couple with lower or upper hitch of the tractor
Drawbar towing hitch: rotary with towing eye ø50mm
Drawbar support: telescopic mechanical straight leg
Hydraulically driven rear shield of beaters
Control tractor hydraulic distributor
Braking system: double line pneumatic
Single line grease system of the adapter
Crank handbrake
Lighting system 12V
Mudguards
Wheel chocks + racks (2 pcs.)
Front protective mesh
Folded ladder
Sidewalls, drawbar, axles and conveyor mechanism color: green RAL6010 PRONAR
Adapter, mudguards and front mesh color: red RAL3000 PRONAR

Additional equipment (optional):
AV20 adapter with 2 vertical beaters
Hydraulically driven rear sliding wall with indicator
Drawbar towing hitch: rigid with towing eye Ø40mm to couple with upper hitch of the tractor
Drawbar towing hitch: rigid ball type K80 mm to couple with lower hitch of the tractor
PTO shaft - standard 20x6
PTO shaft - standard 21x6
PTO shaft - standard 6x6
PTO shaft - wide angle 20x6
PTO shaft - wide angle 21x6
PTO shaft - wide angle 6x6
Spare wheel (separately) 500/50-17
Slow moving vehicle triangle

N262 Standard equipment:

Monocoque loading-body
AH20 adapter with 2 vertical beaters and 2 spreading discs
Drawbar type: rigid to couple with lower hitch of the tractor
Drawbar towing hitch: rotary with towing eye ø50mm PRONAR
Drawbar support: hydraulic straight leg
Control tractor hydraulic distributor
Braking system: double line pneumatic
Crank handbrake
Wheel chocks + racks (2 pcs)
Hydraulically driven rear sliding wall
Hydraulically driven rear shield of beaters
Front protective mesh
Folded ladder
Mudguards
Lighting system 12V
Single line grease system of the adapter
Rear sliding wall open indicator
Rubber cover of rear shield
Sidewalls, drawbar, axles and conveyor mechanism color: green RAL6010 PRONAR
Rear sliding wall, adapter, mudguards and front mesh color: red RAL3000 PRONAR

N262 Additional equipment (optional) :
Double line pneumatic brakes with ALB
Drawbar type: rigid to couple with upper hitch of the tractor
Drawbar towing hitch: rigid with towing eye Ø40mm to couple with upper hitch of the tractor
Drawbar towing hitch: rigid ball type K80 mm to couple with lower hitch of the tractor
Drawbar towing hitch: rotary with towing eye Ø50mm Scharmuller to couple with lower hitch of the tractor
Control manure spreader hydraulic distributor
Rear under run protections
PTO shaft - standard 20x6
PTO shaft - standard 21x6
PTO shaft - standard 6x6
PTO shaft - wide angle 20x6
PTO shaft - wide angle 21x6
PTO shaft - wide angle 6x6
Tires 600/55-22,5
Spare wheel (separately) 550/60-22.5
Spare wheel (separately) 600/55-22.5
Slow moving vehicle triangle

N262/1 Standard equipment:

Monocoque loading-body
AH20 adapter with 2 vertical beaters and 2 spreading discs
Drawbar type: rigid to couple with lower hitch of the tractor
Drawbar towing hitch: rotary with towing eye ø50mm PRONAR
Drawbar support: hydraulic straight leg
Control tractor hydraulic distributor
Braking system: double line pneumatic
Crank handbrake
Wheel chocks + racks (2 pcs)
Hydraulically driven rear sliding wall
Hydraulically driven rear shield of beaters
Front protective mesh
Folded ladder
Mudguards
Lighting system 12V
Single line grease system of the adapter
Rear sliding wall open indicator
Rubber cover of rear shield
Sidewalls, drawbar, axles and conveyor mechanism color: green RAL6010 PRONAR
Rear sliding wall, adapter, mudguards and front mesh color: red RAL3000 PRONAR

N262/1 Additional equipment (optional) :
Double line pneumatic brakes with ALB
Drawbar type: rigid to couple with upper hitch of the tractor
Drawbar towing hitch: rigid with towing eye Ø40mm to couple with upper hitch of the tractor
Drawbar towing hitch: rigid ball type K80 mm to couple with lower hitch of the tractor
Drawbar towing hitch: rotary with towing eye Ø50mm Scharmuller to couple with lower hitch of the tractor
Control manure spreader hydraulic distributor
Rear under run protections
PTO shaft - standard 20x6
PTO shaft - standard 21x6
PTO shaft - standard 6x6
PTO shaft - wide angle 20x6
PTO shaft - wide angle 21x6
PTO shaft - wide angle 6x6
Tires 600/55-22,5
Spare wheel (separately) 600/50-22.5
Spare wheel (separately) 600/55-22.5
Slow moving vehicle triangle

BALE TRANSPORTATION TRAILER

TB-4 Standard equipment:

Loading platform lifted hydraulically
Unloading bales by tilting back the loading platform
Chassis frame made of closed rectangular profiles
Drawbar type: universal rigid to couple with lower hitch of the tractor
Drawbar towing hitch: rotary with towing eye Ø50 mm
Rigid drawbar with hydraulic steering
Hydraulic bales picking and loading system at the front
Side barriers
Hydraulic steering of a rear ladder
Steering from tractor's cabin
Drawbar support: mechanic
Braking system: double line or single line pneumatic
Crank handbrake
Lighting system 12V
Wheel chocks + racks (2 pcs.)
Chassis color: red RAL3000 PRONAR
Platform color: green RAL6010 PRONAR

TB-4 Additional equipment (optional) :
Drawbar towing hitch: rigid with towing eye Ø40 mm
Drawbar towing hitch: rigid ball type K80 mm
Spare wheel (separately) 400/60-15,5
Spare wheel (separately) 400/60-15,6

TO22M Standard equipment:

Loading platform with profiled side borders
Reinforced platform floor - 4mm
Chassis frame made of open and closed rectangular profiles
Chassis frame adjusted to the rear hitch mounting
Drawbar type: V- type rigid with towing eye Ø40 mm
Steering: rotating turntable
Drawbar: rigid drawbar with Ø40 towing hitch eye
Rounded edges of side ladders (front and rear)
Platform extension
Holes for belt tightening on the platform side
Holes for belt tightening on the side ladders
Braking system: double line pneumatic
Crank handbrake
Lighting system 12V with clearance lights
Rear under-ride guard according to 70/221/EC
Rear electric socket
Wheel chocks + racks (2 pcs.)
Platform color: green RAL6010 PRONAR
Wheel chocks hidden in galvanized pockets

Additional equipment (optional) :

Y-type drawbar : rigid with towing eye Ø40 mm Y-type drawbar : rigid with towing eye Ø40 mm
Braking system: single line pneumatic or hydraulic braking system
Braking system: combined (pneumatic + hydraulic)
Braking system: combined (pneumatic + hydraulic) with electric protection system
Braking system: with over-run brake
Tool box
Overrun side protections acc.to 89/297/EWG
Two belt-rolling devices with trigger
Rear pneumatic brakes couplings for second trailer
Rear manual hitch, rigid*
Rounded edges of side ladders mounted with four screws
Front and rear plastic mudguards with galvanized supports
Spare wheel winch unit
Tires 360/65-16
Spare wheel (separately) 400/60-15,5
Spare wheel (separately) 360/65-16
Slow moving vehicle triangle

TO25M Standard equipment:

Loading platform with profiled side borders
Reinforced platform floor - 4mm
Chassis frame made of open and closed rectangular profiles
Chassis frame adjusted to the rear hitch mounting
Drawbar type: V- type rigid with towing eye Ø40 mm
Steering: rotating turntable
Drawbar: rigid drawbar with Ø40 towing hitch eye
Rounded edges of side ladders (front and rear)
Platform extension
Holes for belt tightening on the platform side
Holes for belt tightening on the side ladders
Braking system: double line pneumatic
Crank handbrake
Lighting system 12V with clearance lights
Rear under-ride guard according to 70/221/EC
Rear electric socket
Wheel chocks + racks (2 pcs.)
Platform color: green RAL6010 PRONAR
Wheel chocks hidden in galvanized pockets

TO25M Additional equipment (optional) :
Y-type drawbar : rigid with towing eye Ø40 mm Y-type drawbar : rigid with towing eye Ø40 mm
Braking system: single line pneumatic or hydraulic braking system
Braking system: combined (pneumatic + hydraulic)
Braking system: combined (pneumatic + hydraulic) with electric protection system
Tool box
Overrun side protections acc.to 89/297/EWG
Two belt-rolling devices with trigger
Rear pneumatic brakes couplings for second trailer
Rear manual hitch, rigid*
Rounded edges of side ladders mounted with four screws
Front and rear plastic mudguards with galvanized supports
Spare wheel winch unit
Tires 520/50-17
Spare wheel (separately) 500/50-17
Spare wheel (separately) 520/50-17
Slow moving vehicle triangle

TO24M , Standard equipment:

Loading platform with profiled side borders
Reinforced platform floor - 4mm
Chassis frame made of closed rectangular profiles
Chassis frame adjusted to the rear hitch mounting
Drawbar type: universal rigid to couple with lower or upper hitch of the tractor
Drawbar towing hitch: rotary with towing eye Ø450 mm
Drawbar support: hydraulic leg scissor-type
Rounded edges of side ladders (front and rear)
Holes for belt tightening on the platform side
Holes for belt tightening on the side ladders
Braking system: double line pneumatic
Crank handbrake
Lighting system 12 V with clearance lights
Rear under-ride guard according to 70/221/EC
Rear electric socket
Wheel chocks + racks (2 pcs.)
Platform color: green RAL6010 PRONAR

Additional equipment (optional) :
Drawbar towing hitch: rigid with towing eye Ø40mm Drawbar towing hitch: rigid with towing eye Ø40mm
Drawbar towing hitch: rigid ball type K80 mm
Braking system: single line pneumatic or hydraulic braking system
Braking system: combined (pneumatic + hydraulic)
Braking system: combined (pneumatic + hydraulic) with electric protection system
Braking system: double line pneumatic with ALB
Tool box
Overrun side protections acc.to 89/297/EWG
Rear manual hitch, rigid*
Two belt-rolling devices with trigger
Rounded edges of side ladders mounted with four screws
Front and rear plastic mudguards with galvanized supports
Tires 500/50-17
Tires 520/50-17
Tires 385/55 R22.5 regenerowane
Tires 385/55 R22.5
Spare wheel (separately) 15.0/70-18TL
Spare wheel (separately) 500/50-17
Spare wheel (separately) 385/55 R22.5 RE
Spare wheel (separately) 385/55 R22.5
Spare wheel (separately) 520/50-17
Slow moving vehicle triangle

TO23M Standard equipment:

Loading platform with profiled side borders
Reinforced platform floor - 4mm
Chassis frame made of open and closed rectangular profiles
Chassis frame adjusted to the rear hitch mounting
Drawbar type: V- type rigid with towing eye Ø40 mm
Steering: rotating turntable
Rounded edges of side ladders (front and rear)
Platform extension
Holes for belt tightening on the platform side
Holes for belt tightening on the side ladders
Braking system: double line pneumatic
Crank handbrake
Lighting system 12V with clearance lights
Rear under-ride guard according to 70/221/EC
Rear electric socket
Wheel chocks + racks (2 pcs.)
Platform color: green RAL6010 PRONAR
Wheel chocks hidden in galvanized pockets

**T023M Additional equipment (optional) :**

Y-type drawbar hitch: rigid with towing eye ø40 mm
 Braking system: single line pneumatic or hydraulic braking system
 Braking system: combined (pneumatic + hydraulic)
 Braking system: combined (pneumatic + hydraulic) with electric protection system
 Tool box
 Overrun side protections acc.to 89/297/EWG
 Two belt-rolling devices with trigger
 Rear manual hitch, rigid*
 Rounded edges of side ladders mounted with four screws
 Front and rear plastic mudguards with galvanized supports
 Spare wheel winch unit
 Tires 360/65-16
 Spare wheel (separately) 400/60-15,5
 Spare wheel (separately) 360/65-16
 Slow moving vehicle triangle

T026M Standard equipment:

Loading platform with profiled side borders
 Reinforced platform floor - 4mm
 Chassis frame made of open and closed rectangular profiles
 Chassis frame adjusted to the rear hitch mounting
 Drawbar type: V- type rigid with towing eye ø40 mm
 Steering: rotating turntable
 Rounded edges of side ladders (front and rear)
 Platform extension
 Holes for belt tightening on the platform side
 Holes for belt tightening on the side ladders
 Braking system: double line pneumatic
 Crank handbrake
 Lighting system 12V with clearance lights
 Rear under-ride guard according to 70/221/EC
 Rear electric socket
 Wheel chocks + racks (2 pcs.)
 Platform color: green RAL6010 PRONAR
 Wheel chocks hidden in galvanized pockets

Wyposażenie dodatkowe (opcjonalne) :

Y-type drawbar hitch: rigid with towing eye ø40 mm
 Braking system: single line pneumatic or hydraulic braking system
 Braking system: combined (pneumatic + hydraulic)
 Braking system: combined (pneumatic + hydraulic) with electric protection system
 Tool box
 Overrun side protections acc.to 89/297/EWG
 Two belt-rolling devices with trigger
 Rear manual hitch, rigid*
 Rounded edges of side ladders mounted with four screws
 Front and rear plastic mudguards with galvanized supports
 Spare wheel winch unit
 Tires 520/50-17
 Spare wheel (separately) 500/50-17 14PR
 Spare wheel (separately) 520/50-17
 Slow moving vehicle triangle

T022 Standard equipment:

Loading platform with flat side borders
 Chassis frame made of open rectangular profiles
 Drawbar type: V- type rigid with towing eye ø40 mm
 Steering: rotating turntable
 Side ladders: front and rear
 Platform extension
 Braking system: double line pneumatic
 Crank handbrake
 Lighting system 12V with clearance lights
 Rear under-ride guard according to 70/221/EC integrated with commercial road lighting system
 Rear electric socket
 Wheel chocks + racks (2 pcs.)
 Platform color: green RAL6010 PRONAR

Additional equipment (optional) :

Y-type drawbar : rigid with towing eye ø40 mm
 Braking system: single line pneumatic or hydraulic braking system
 Braking system: combined (pneumatic + hydraulic)
 Braking system: combined (pneumatic + hydraulic) with electric protection system
 Braking system: with over-run brake (for 8 tones of allowable total weight, 25km/h)
 Overrun side protections acc.to 89/297/EWG
 Tool box
 Front and rear plastic mudguards with galvanized supports
 Rear pneumatic brakes couplings for second trailer
 Rear manual hitch, rigid*
 Spare wheel winch unit
 Tires 360/65-16
 Spare wheel (separately) 400/60-15.5
 Spare wheel (separately) 360/65-16
 Slow moving vehicle triangle

T025 Standard equipment:

Loading platform with flat side borders
 Chassis frame made of open rectangular profiles
 Drawbar type: V- type rigid with towing eye ø40 mm
 Steering: rotating turntable
 Side ladders: front and rear
 Platform extension
 Braking system: double line pneumatic
 Crank handbrake
 Lighting system 12V with clearance lights
 Rear under-ride guard according to 70/221/EC integrated with commercial road lighting system
 Rear electric socket
 Wheel chocks + racks (2 pcs.)
 Wheel chocks hidden in galvanized pockets
 Platform color: green RAL6010 PRONAR

T025 Additional equipment (optional) :

Y-type drawbar : rigid with towing eye ø40 mm
 Braking system: single line pneumatic or hydraulic braking system
 Braking system: combined (pneumatic + hydraulic)
 Braking system: combined (pneumatic + hydraulic) with electric protection system
 Rear pneumatic brakes couplings for second trailer
 Rear manual hitch, rigid*
 Overrun side protections acc.to 89/297/EWG
 Tool box
 Front and rear plastic mudguards with galvanized supports
 Spare wheel winch unit
 Tires 520/50-17
 Spare wheel (separately) 500/50-17
 Spare wheel (separately) 520/50-17
 Slow moving vehicle triangle

T024 Standard equipment:

Loading platform with flat side borders
 Chassis frame made of closed rectangular profiles
 Drawbar type: universal rigid to couple with lower or upper hitch of the tractor
 Drawbar towing hitch: rotary with towing eye ø50 mm
 Drawbar support: hydraulic scissor-type leg
 Side ladders: front and rear
 Braking system: double line pneumatic
 Crank handbrake
 Lighting system 12V with clearance lights
 Rear under-ride guard according to 70/221/EC integrated with commercial road lighting system
 Rear electric socket
 Wheel chocks + racks (2 pcs.)
 Platform color: green RAL6010 PRONAR

T024 Additional equipment (optional) :

Drawbar towing hitch: rigid with towing eye 40mm
 Braking system: single line pneumatic or hydraulic braking system
 Braking system: double line pneumatic with ALB
 Braking system: combined (pneumatic + hydraulic) with electric protection system
 Braking system: combined (pneumatic + hydraulic)
 Rear manual hitch, rigid*
 Overrun side protections acc.to 89/297/EWG
 Tool box
 Front and rear plastic mudguards with galvanized supports
 Tires 500/50-17
 Tires 385/55 R22,5 RE
 Tires 385/55 R22,5
 Spare wheel (separately) 15.0/70-18TL
 Spare wheel (separately) 500/50-17
 Spare wheel (separately) 385/55 R22,5 RE
 Spare wheel (separately) 385/55 R22,5
 Slow moving vehicle triangle

T023 Standard equipment:

Loading platform with flat side borders
 Chassis frame made of open rectangular profiles
 Drawbar type: V- type rigid with towing eye ø40 mm
 Steering: rotating turntable
 Side ladders: front and rear
 Platform extension
 Braking system: double line pneumatic
 Crank handbrake
 Lighting system 12V with clearance lights
 Rear under-ride guard according to 70/221/EC integrated with commercial road lighting system
 Rear electric socket
 Wheel chocks + racks (2 pcs.)
 Wheel chocks hidden in galvanized pockets
 Platform color: green RAL6010 PRONAR

Additional equipment (optional) :

Y-type drawbar hitch: rigid with towing eye ø40 mm
 Braking system: single line pneumatic or hydraulic braking system
 Braking system: combined (pneumatic + hydraulic)
 Braking system: combined (pneumatic + hydraulic) with electric protection
 Rear manual hitch, rigid
 Overrun side protections acc.to 89/297/EWG
 Tool box
 Front and rear plastic mudguards with galvanized supports
 Spare wheel winch unit
 Tires 360/65-16
 Spare wheel (separately) 400/60-15.5
 Spare wheel (separately) 360/65-16
 Slow moving vehicle triangle

T026 Standard equipment:

Drawbar type: V- type rigid with towing eye ø40 mm
Steering: rotating turntable
Side ladders: front and rear
Platform extension
Braking system: double line pneumatic
Crank handbrake
Lighting system 12V with clearance lights
Rear under-ride guard according to 70/221/EC integrated with commercial road lighting system
Rear electric socket
Wheel chocks + racks (2 pcs.)
Wheel chocks hidden in galvanized pockets
Platform color: green RAL6010 PRONAR

Additional equipment (optional) :

Y-type drawbar hitch: rigid with towing eye ø40 mm
Braking system: single line pneumatic or hydraulic braking system
Braking system: combined (pneumatic + hydraulic)
Braking system: combined (pneumatic + hydraulic) with electric protection
Rear manual hitch, rigid*
Overrun side protections acc.to 89/297/EWG
Tool box
Front and rear plastic mudguards with galvanized supports
Spare wheel winch unit
Tires 520/50-17
Spare wheel (separately) 500/50-17
Spare wheel (separately) 520/50-17
Slow moving vehicle triangle

ANIMAL TRANSPORTATION TRAILER

T046 Standard equipment:

Platform with screwed walls
Sidewalls made of double-side laminated plywood 18 mm
Rear side - platform manually opened
Rigid drawbar integrated with frame to couple with lower hitch of the tractor
Drawbar towing hitch: rotary with towing eye 50 mm to couple with lower hitch of the tractor
Drawbar support: supporting wheel
Suspension with rigid axle equipped in drum brake 300x90
Braking system: single or double line pneumatic or hydraulic
Crank handbrake
Lighting system 12V
Loading platform made of waterproof anti-sliding plywood
Springs facilitating opening and closing of the rear door
Unfolding side barriers on the loading platform
Stelaż plandeki wraz z poprzeczkami łączącymi
Laced cover complete with frames
Wheel chocks + racks
Materiały malarskie chemoutwardzalne dwuskładnikowe o wysokiej trwałości i odporności na UV
Platform color: green RAL6010 PRONAR PRONAR

Additional equipment (optional) :

Drawbar towing hitch: fixed upper with 40 mm towing eye (40 km/h version)
Drawbar towing hitch: rigid ball-type K80 mm
Chequer plate floor (4 mm) with two drainage holes
Chequer plate floor with two drainage holes covered with anti-sliding and damping resin
Animal separating inner barrier
Over-run brakes (40 km/h version)
Lever handbrake
Tires 14.0/65-16
Tires 400/60 15.5
Spare wheel (separately) 11.5/80-15.3
Spare wheel (separately) 14.0/65-16
Spare wheel (separately) 400/60-15.5
Slow moving vehicle triangle

T046/1 Standard equipment:

Platform with screwed walls
Wooden floor pretreated with deep-impregnating agent
Sidewalls made of double-side laminated plywood 18 mm
Rear side - platform manually opened
Rigid drawbar integrated with frame to couple with lower hitch of the tractor
Drawbar towing hitch: rotary with towing eye 50 mm to couple with lower hitch of the tractor
Suspension with rigid axles equipped in drum brakes 300x60
Braking system: single or double double line pneumatic or hydraulic
Crank handbrake
Lighting system 12V
Loading platform made of waterproof anti-sliding plywood
Springs facilitating opening and closing of the rear door
Unfolding side barriers on the loading platform
Laced cover complete with frames
Wheel chocks + racks
Platform color: green RAL6010 PRONAR PRONAR

T046/1 Additional equipment (optional) :

Drawbar towing hitch: fixed upper with 40 mm towing eye (40 km/h version)
Drawbar towing hitch: rigid ball-type K80 mm
Chequer plate floor (4 mm) with two drainage holes
Chequer plate floor with two drainage holes covered with anti-sliding and damping resin
Animal separating inner barrier
Over-run brakes (Permissible loading capacity: 8000kg, 40 km/h version)
Lever handbrake
Tires 14.0/65-16
Tires 400/60 15.5
Spare wheel (separately) 11.5/80-15.3
Spare wheel (separately) 14.0/65-16
Spare wheel (separately) 400/60-15.5
Slow moving vehicle triangle

T046/2 Standard equipment:

Chassis frame made of closed rectangular profiles
Universal drawbar integrated with frame to couple with upper or lower hitch of the tractor
Drawbar towing hitch: rotary with towing eye 50 mm to couple with lower hitch of the tractor
Hydraulically lowered loading-body
Hydraulic vibration shock absorbers
Drawbar support: mechanic with a crank
Sealed chequer plate floor with two drainage holes
Sidewalls made of profiles steel 3 mm
Wide-opening of rear door
Braking system: single or double line pneumatic or hydraulic
Crank handbrake
Lighting system
Frame connected with crossbars
Wheel chocks + racks
Swinging gull-wing side doors
Platform color: green RAL6010 PRONAR
Additional equipment (optional) :
Drawbar towing hitch: fixed upper with 40 mm towing eye (40 km/h version)
Drawbar towing hitch: rigid ball-type K80 mm
Drawbar support: hydraulic scissor-type with ball cut-off valve
Side barriers on the loading platform
Chequer plate floor with two drainage holes covered with anti-sliding and damping resin
Animal separating inner barrier
Laced cover
Tires 400/60 15.5 (trailer width 2605mm)
Spare wheel (separately) 14.0/65-16
Spare wheel (separately) 400/60-15.5
Slow moving vehicle triangle



TRANSSHIPPING TRAILER

T740 Standard equipment:

Drawbar: fixed integrated with frame
 Drawbar support: telescopic with 2-section gear
 Drawbar towing hitch: rotary towing eye Ø50mm
 Tandem type suspension with parabolic springs and wheel track 1810mm, with passive steering of rear axle
 Drum brakes 400x140
 Braking system: single or double line pneumatic or hydraulic
 Crank handbrake
 Sidewalls profiles with additional supports and extensions 340mm
 Two-segment front conveyor hydraulically folded with hydraulic safety lock
 Frame of cover with a rope grate
 Hydraulically driven revision hole for load-carrying body cleaning
 Three windows to control the level of loaded material
 Double floor conveyor with two-stage controller of floor conveyor speed
 A set of steel mudguards
 Folded ladder and steps facilitating access to load-carrying body
 Wheel chocks + racks
 Lighting system 12V
 Chassis color red RAL3000 PRONAR
 Load-carrying body color: green RAL6010 PRONAR

Additional equipment (optional) :

Rolled canvas cover
 Braking system: double line pneumatic with automatic (ALB) braking speed controller
 6-point weighing system with LCD
 Printer
 Elastic unloading pipe
 Drawbar towing hitch: rigid ball-type K80mm
 Spare wheel (separately) 700/50-26.5
 Slow-moving vehicle triangle

T743 Standard equipment:

Drawbar: fixed integrated with frame
 Drawbar towing hitch: rigid ball-type K80mm
 Drawbar support: telescopic with 2-section gear
 Tridem suspension with wheel track 1810mm, with rigid central axle. Front and rear axles with active steering
 Hydraulic steering with manual pump filling system
 Steering connection system consistent with ISO 26402 (trailer is not equipped with tractor steering system)
 Drum brakes 400x140
 Braking system: single or double line pneumatic
 Pneumatic parking brake
 Two-segment front conveyor hydraulically folded with hydraulic safety lock
 Sidewalls profiles with additional supports and extensions 340mm
 Frame of cover with a rope grate
 Four revision holes for load-carrying body cleaning
 Hydraulically driven revision hole for load-carrying body cleaning
 Three windows to control the level of loaded material
 Double floor conveyor with two-stage controller of floor conveyor speed
 A set of steel mudguards
 Operator's platform inside loading case
 Folded ladder and steps facilitating access to load-carrying body
 Wheel chocks + racks
 Lighting system 12V
 Chassis color red RAL3000 PRONAR
 Load-carrying body color: green RAL6010 PRONAR

Additional equipment (optional):

Braking system: double line pneumatic with automatic (ALB) braking speed controller
 8-point weighing system with LCD
 Printer
 Elastic unloading pipe
 Rolled canvas cover
 Spare wheel (separately) 700/50-26.5
 Slow-moving vehicle triangle

POWER PUSH TRAILER

T900 Standard equipment:

Sealed movable wall
 Hydraulically driven tailgate with automatic blocking system
 Drawbar with rotary towing eye Ø50
 Drawbar support: telescopic with 2-section gear
 Universal rigid drawbar with leaf spring
 Tridem suspension with wheel track 1810mm, with fixed central axle and front and rear active steering axles
 Hydraulic turning block with manual pump filling system
 Drum brakes 400x140
 Steering connection system consistent with ISO 26402 (trailer is not equipped with a steering system)
 Braking system: double line pneumatic
 Pneumatic handbrake
 Folded rear bumper
 Wheel chocks + racks
 A set of plastic mudguards
 Lighting system with clearance lights
 Hydraulic pipes marked with colors to better identification of their destiny
 Ladder
 Windows on the movable wall
 Grain damper in a rear wall
 Chassis color red RAL3000 PRONAR
 Sidewalls color green RAL6010 PRONAR

Additional equipment (optional):

Drawbar towing hitch: rigid with towing eye Ø40mm/ Ø50mm to couple with upper and lower hitch of the tractor
 Drawbar towing hitch: rigid with towing eye Ø50mm to couple with upper and lower hitch of the tractor
 Drawbar towing hitch: rigid ball-type K80mm
 Drawbar support: hydraulic straight with cut-off ball valve
 Tridem hydraulic axles with six leaf semi-springs, wheel track 1810mm, with fixed central axle and front and rear active steering axles, hydraulically stabilised and controlled with front axle lifting system
 Braking system: double line pneumatic with automatic (ALB) braking speed controller and membrane-spring braking
 Braking system: double line pneumatic with automatic (ALB) braking speed controller and membrane-spring braking cylinders for hydraulic suspension
 A set of plastic mudguards and steel mudguard protecting wheel from upside if the width of the trailer exceeds 2550mm
 Hydraulically driven side flap height 500mm with automatic locking system on the left or right side
 Hydraulically driven side flap height 500mm with automatic locking system on both sides of the trailer
 Grain chute spout:
 Tires 445/65R22.5
 Tires 445/65R22.5Regenerowane
 Tires 600/50-R22.5 - width of the trailer exceeds 2550mm
 Tires 600/55-22.5 - width of the trailer exceeds 2550mm
 Tires 700/50-26.5 - width of the trailer exceeds 2550mm
 Spare wheel (separately) 445/65 R22.5 regenerated
 Spare wheel (separately) 445/65 R22.5
 Spare wheel (separately) 550/60 22.5
 Spare wheel (separately) 600/55-R22.5
 Spare wheel (separately) 600/55-22.5
 Spare wheel (separately) 700/50-26.5
 Slow-moving vehicle triangle

T902 Standard equipment:

Sealed movable wall
 Hydraulically driven tailgate with automatic blocking system
 Drawbar with rotary towing eye Ø50
 Drawbar support: telescopic with 2-section gear
 Universal rigid drawbar with leaf spring
 Tandem suspension with wheel track 1810mm, with fixed front axle and rear active steering axle
 Hydraulic turning block with manual pump filling system
 Steering connection system consistent with ISO 26402 (trailer is not equipped with a steering system)
 Drum brakes 400x140
 Braking system: double line pneumatic
 Crank handbrake
 Folded rear bumper
 A set of plastic mudguards
 Lighting system with clearance lights
 Wheel chocks + racks
 Electric system with lateral commercial road lighting
 Hydraulic pipes marked with colors to better identification of their destiny
 Ladder
 Windows on the movable wall
 Grain damper in a rear wall
 Chassis color red RAL3000 PRONAR
 Sidewalls color green RAL6010 PRONAR

Additional equipment (optional):

Drawbar towing hitch: rigid with towing eye Ø40mm/Ø50mm to couple with upper and lower hitch of the tractor
 Drawbar towing hitch: rigid ball-type K80mm
 Braking system: single line pneumatic or hydraulic braking system
 Braking system: double line pneumatic with automatic (ALB) braking speed controller and membrane-spring braking cylinders for hydraulic suspension
 Braking system: double line pneumatic with automatic (ALB) braking speed controller
 A set of plastic mudguards and steel mudguard protecting wheel from upside if the width of the trailer exceeds 2550mm
 Hydraulically driven side flap height 500mm with automatic locking system on the left or right side
 Hydraulically driven side flap height 500mm with automatic locking system on both sides of the trailer
 Tandem hydraulic axles with four leaf semi-springs, wheel track 1810mm, with fixed front axle and rear active steering axle, hydraulically stabilised and controlled
 Grain chute spout:
 Tires 445/65 R22,5
 Tires 445/65 R22.5Regenerowane
 Tires 600/50-R22.5-pallet transportation width exceed 2550mm
 Tires 600/55-22.5-pallet transportation width exceed 2550mm
 Tires 700/50-26.5 - width of the trailer exceeds 2550mm
 Spare wheel (separately) 445/65 R22.5 regenerated
 Spare wheel (separately) 445/65 R22.5
 Spare wheel (separately) 550/60 22.5
 Spare wheel (separately) 600/55-R22.5
 Spare wheel (separately) 600/55-22.5
 Spare wheel (separately) 700/50-26.5
 Slow-moving vehicle triangle

TRANSPORTATION TRAILER

T400 Standard equipment:

Loading box with bolted walls, adapted to mounting additional spreading rollers, drivetrain of metering rollers and PTO shaft.
Chassis frame made of rectangular closed profiles
Hydraulically driven floor conveyor of 4 chains, drivetrain of the conveyor on both sides
Wooden floor board with metal rails of conveyor's chains
Rear wall lifted hydraulically
Front wall made of vertical aluminium profiles with regulated perforated steel sheet window
Hydraulic steering from tractor distributor
Mechanical locking of the front wall
Drawbar: rigid with shock absorber, adapted to couple with lower hitch of the tractor
Drawbar towing hitch- rotary with Ø50 towing eye
Drawbar support: telescopic mechanical straight leg
Braking system: single line, double line pneumatic or hydraulic
Crank handbrake
Wheel chocks + racks (2 pcs)
Lighting system 12 V
Rear lamps with protective grating
Rear underrun protection, folded
Chemically hardened painting materials , UV-resistant
Mudguards
Sidewall color: natural ALUCYNK
Chassis, drawbar, axles, rear bar and mudguards color: red RAL 3000 PRONAR
Loading box color: green RAL 6010 PRONAR
Additional equipment (optional) :
Drawbar towing hitch: rigid ball-type K80mm
Braking system: pneumatic with ALB
Spreading rollers for green forage with power transmission mechanism and connection shaft
Spreading rollers for chopped corn with power transmission mechanism and connection shaft
Spare wheel separately 700/50-26.5
Slow-moving vehicle triangle

T644/1 Standard equipment:

Frame: rectangular frame with platform over axels
Drawbar support: straight, mechanic
Front barrier separating loading space
Hydraulically driven rear frame with side posts
Hydraulically controlled drawbar with fixed with towing eye 40 mm, DIN11026
Straight on driving drawbar blockade
Crane on telescopic supports with rotary grapple
Hydraulic controller operated by strings from the tractor
Braking system: double line pneumatic
Wheel chocks + racks (2pcs)
Chemically hardened painting materials , UV-resistant.
Paintwork: Chassis green RAL 6010 PRONAR
Paintwork: Crane red RAL 3000 PRONAR
Paintwork: Front barrier and side posts black RAL 9005
Additional equipment (optional) :
Drawbar towing hitch: rotary with towing eye Ø50
Drawbar towing hitch: ball -type K80
Self hydraulic system
PTO shaft: 6x6
PTO shaft 21x6
Two additional side posts on the frame
Wheels 400/60-15,5 156A8 Flot
Slow-moving vehicle triangle

HOOK LIFT TRAILER

T185 Standard equipment:

Chassis frame: rectangular made of closed profiles
Drawbar: rigid, integrated with frame to couple with hitch of the tractor (transport hitch, piton fix)
Drawbar towing hitch: rotary towing eye Ø50
Drawbar support: hydraulic straight leg with cut-off ball valve
Tandem suspension with trailing arms and rigid axles, equipemd in drum brakes 300x135
Braking system: double or single line pneumatic or hydraulic
Hydraulic blocking system of the trailing arms (suspension)
Crank handbrake
Rear bumper with manual setting in 2 positions (depends on length of the container)
Lighting system 12 V without side clearance lights
Tractor should have 3 pairs of hydraulic sockets to control: suspension lock, tipping frame, hook frame.
Steel mudguards
Wheel chocks + racks (2pcs)
Hydraulic reloading system with manual switch lift / tipper
Chemically hardened painting materials , UV-resistant
Chassis color red RAL3000 PRONAR
Additional equipment (optional) :
Drawbar towing hitch: rigid with towing eye Ø40mm to couple with upper hitch of the tractor
Drawbar towing hitch: ball-type K80mm to couple with lower hith of the tractor
Drawbar support: telescopic with 2-section gear
Drawbar support: telescopic supporting leg with a pin
Trailer hook with automatic container lock and regulated height in 2 positions
Plastic mudguards
Commercial road lighting system including lateral outline lights
Side underrun protections acc to directive 89/297/AE
Tool box
Electric steering from tractors cabin of 3 functions: suspension blockage, container loading, container reloading)
Own hydraulic system with oil container, a pump, transmission and PTO shaft with electric steering of 3 functions from tractor's cabin : suspension blockage, container loading, container reloading)
Hydraulic container lock with independent steering (for the tracotrs with min. 4 hydraulic output pairs)
Braking system: hydraulic with mechanical safety valve
Braking system: hydraulic with electric safety valve and braking speed controller
Braking system: combined (double line pneumatic + hydraulic)
Braking system: combined (double line pneumatic + hydraulic with mechanical safety valve)
Braking system: combined (double line pneumatic + hydraulic with electrical safety valve and braking speed controller)
Braking system: combined (double line pneumatic + hydraulic with electric safety valve)
Tires 520/50 - 17
Tires 385/55 R22.5 RE
Tires 385/55 R22.5
Spare wheel (separately) 500/50-17
Spare wheel (separately) 520/50-17
Spare wheel (separately) 385/55 R22.5
Spare wheel (separately) 385/55 R22.5 RE
Slow-moving vehicle triangle

T285 Standard equipment:

Chassis frame: rectangular made of dosed profiles
Drawbar: rigid, integrated with frame to couple with hitch of the tractor (transport hitch, piton fix)
Drawbar towing hitch: rotary towing eye Ø50
Drawbar support: hydraulic straight leg with cut-off ball valve
Tandem suspension with trailing arms and rigid axles, equipemd in drum brakes 400x140
Braking system: double or single line pneumatic or hydraulic
Hydraulic blocking system of the trailing arms (suspension)
Crank handbrake
Rear bumper with manual setting in 3 positions (depends on length of the container)
Lighting system 12 V with side clearance lights
Steel mudguards
Tractor should have 3 pairs of hydraulic sockets to control: suspension lock, tipping frame, hook frame.
Wheel chocks + racks (2pcs)
Mechanical container lock (for containers made in acc. to DIN 30722) with possiblity to change the position depending on length of the container
Hydraulic reloading system with manual switch lift / tipper
Trailer hook with automatic container lock and regulated height in 2 positions (adaptation for containers acc. to DIN 30722and acc.to SS 3021)
Chemically hardened painting materials , UV-resistant
Chassis color red RAL3000 PRONAR
Additional equipment (optional) :
Drawbar towing hitch: rigid with Ø40mm towing eye
Drawbar towing hitch: ball-type K80mm
Drawbar towing hitch: rigid with Ø50mm towing eye
Drawbar support: telescopic with 2-section gear
Drawbar support: telescopic supporting leg with a pin
Side underrun protections
Plastic mudguards
Hydraulic container lock connected to suspension lock (for the tracotrs with min. 3 hydraulic output pairs), with electrohydraulic security system
Hydraulic container lock with independenyt steering (for the tracotrs with min. 4 hydraulic output pairs)
Electric steering from tractor's cabin of 4 functions: container lock, suspension blockage, container loading, container reloading)
Separate hydraulic system with oil container, a pump, transmission and PTO shaft with electric steering from tractors cabin of 3 functions: suspension blockage, container loading, container reloading)
Mechanical container lock for containers acc. to SS 3021
Braking system: combined (double line pneumatic + hydraulic)
Rear couplings for second trailer (to supply hydraulic tailgate of a container)
Tires 385/65 R22.5
Tires 425/65 R22.5
Tires 445/65 R22.5
Tires 445/65 R22.5 RE
Tires 500/60 R22.5
Tires 600/50-22.5 - width of the trailer exceeds 2550mm:
Tires 600/50 R22,5 - width of the trailer exceeds 2550mm:
Spare wheel (separately) 385/65 R22.5 RE
Spare wheel (separately) 385/65 R22.5
Spare wheel (separately) 425/65 R22.5
Spare wheel (separately) 445/65 R22.5 RE
Spare wheel (separately) 445/65 R22.5
Spare wheel (separately) 500/60 R22.5
Spare wheel (separately) 600/50-22.5
Spare wheel (separately) 600/50 R22.5
Slow-moving vehicle triangle

T285/1 Standard equipment:

Chassis frame: rectangular made of closed profiles
 Drawbar: rigid, integrated with frame to couple with hitch of the tractor (transport hitch, piton fix)
 Drawbar towing hitch: rotary towing eye Ø50
 Drawbar support: hydraulic straight leg with cut-off ball valve
 Tandem suspension on parabolic springs with wheelbase 1810mm, rigid front axle and rear axle passively steered, with hydraulic turning blockade, equipped in drum brakes 400x140
 Braking system: double or single line pneumatic or hydraulic
 Crank handbrake
 Rear bumper with manual setting in 3 positions (depends on length of the container)
 Lighting system 12 V with side clearance lights
 Steel mudguards
 Wheel chocks + racks (2pcs)
 Central hydraulic system with electro-hydraulic security system controlled by tractor's hydraulic divider (for tractors with 3 pairs of hydraulic outputs) of functions (suspension blockage, hydraulic container lock, hydraulic tipping with hydraulic switch lift/tipper with light signal, hydraulic hook arm
 Trailer hook with automatic container lock and regulated height in 2 positions (adaptation for containers acc. to DIN 30722and acc.to SS 3021)
 Chemically hardened painting materials , UV-resistant
 Chassis color red RAL3000 PRONAR

Additional equipment (optional) :
 Drawbar towing hitch: rigid with Ø40mm towing eye
 Drawbar towing hitch: ball-type K80mm
 Drawbar towing hitch: rigid with Ø50mm towing eye
 Drawbar support: telescopic with 2-section gear
 Drawbar support: telescopic supporting leg with a pin
 Side underrun protections
 Tool box
 Braking system: double line pneumatic with ALB
 Braking system: combined (double line pneumatic + hydraulic)
 Braking system: combined (double line pneumatic + hydraulic with electrical safety valve and braking power controller)
 Rear couplings of braking system for second trailer
 Electric steering from tractor's cabin of Central Hydraulic System (hydraulic system needs 1 pair of hydraulic couplings)
 Electric steering from tractor's cabin of Central Hydraulic System and rear couplings (hydraulic system needs 1 pair of hydraulic couplings)
 Rear couplings for second trailer (to supply hydraulic tailgate of a container)
 Plastic mudguards
 Separate hydraulic system with oil container, a pump, transmission and PTO shaft with electric steering from tractors cabin of 3 functions: suspension blockage, container loading, container reloading)
 Suspension stabilizer (set for one axle)
 Tires 445/65 R22.5
 Tires 500/60 R22.5
 Tires 560/60 R22,5
 Tires 600/50 R22,5 - width of the trailer exceeds 2550mm:
 Tires 600/55-22.5 - width of the trailer exceeds 2550mm:
 Tires 620/50 R22,5 - width of the trailer exceeds 2550mm:
 Spare wheel (separately) 445/65 R22.5 RE
 Spare wheel (separately) 445/65 R22.5
 Spare wheel (separately) 500/60 R22.5
 Spare wheel (separately) 560/60 R22.5
 Spare wheel (separately) 600/50 R22.5
 Spare wheel (separately) 620/50 R22.5
 Slow-moving vehicle triangle

LOW LOADING TRAILERS

PB3100 Standard equipment:

PFloor: wooden planks 45 mm
 Axles: 3 x 9t (BPW)
 Drum brakes
 ABS (on 2 axles)
 Mechanical suspension (BPW)
 Pneumatic brakes with EBS: Knorr-Bremse
 Pneumatic handbrake
 Additional power to the EBS system via „stop“ lights
 Tires 235/75 R17,5 - 143/141J (12 pcs)
 Drawbar hitch Ø40
 Drawbar length: 2400 mm
 Electric 24V system in accordance with 48 EKG ONZ
 Side under-ride guards in accordance with 89/297/EWG
 Hydraulic ramp lowering/lifting system
 Ramps width regulated mechanically
 Mudguards
 Mudflaps accoring with 91/226/EWG
 Tie-down rings in the floor: 14 pieces
 Wheel chocks + racks
 Rear support legs
 Chemically hardened painting materials , UV-resistant.
 Clearance markings
 Reflection boards

Additional equipment (optional) :
 Floor: oak 45mm
 Spare wheel + basket
 Reflection boards for overdimension loading (with clearance lights)
 Beacon light
 Tool box (~50 l) 1 or 2 (price for one piece)
 Floor broadenings + boards (pine/spruce)
 Steel box (~240 l)
 Sidewalls at the front of the trailer - height 500mm ver I (front wall)
 Sidewalls at the front of the trailer - height 500mm ver II (front wall + closing front wall)
 Sidewalls at the front of the trailer - height 500mm ver III (front wall +2 sidewalls + closing rear wall)
 Sidewalls at the front of the trailer - height 500mm ver IV (front wall +2 sidewalls + closing front wall + closing rear wall)
 Drawbar hitch Ø50
 Hydraulically driven lift up to 6500 kg (optional: 8000 kg)

RC2100 Standard equipment:

Floor: wooden planks 45 mm
 Axles: 2x9 t (ATW/ADR)
 Drum brakes
 Mechanical suspension (ATW/ADR)
 Pneumatic double line braking system with ALB
 Crank handbrake
 Drawbar hitch: ball type K80
 Drawbar support: hydraulic, straight, folded leg
 12V lighting system with rear electric socket
 Side under-ride guards
 Mechanically lowered ramps
 Support legs in rear of the trailer
 Tie-down rings in the floor: 11 pieces
 Wheel chocks: 2 pieces
 Steel box at front of the trailer for storing broadenings
 Slow-moving vehicle triangle
 Chemically hardened painting materials , UV-resistant.
 Paintwork: orange RAL 2008

Additional equipment (optional):
 Hydraulically driven ramps lowering system
 Braking system: double line pneumatic ALB Knorr
 Braking system: single line pneumatic ALB
 Braking system: double line pneumatic ALB – 60 km/h
 Braking system: hydraulic
 Combined braking system (double line pneumatic+hydraulic)
 Combined braking system (double line pneumatic+hydraulic with mechanical safety valve)
 Combined braking system (double line pneumatic+hydraulic with electric safety valve and braking force regulator)
 Floor: oak 45mm
 Drawbar hitch: rigid Ø40 / rigid Ø50 / rotary Ø50
 Floor enlargings + boards (pine/spruce)
 Hydraulically driven lift
 Spare wheel: 1 or 2 (for one piece)
 Water container (30 l) with soap feeder
 Tool box (~50 l)
 Slow-moving vehicle triangle

RC2100 -1 Standard equipment:

Floor: wooden planks 45 mm
 Drum brakes
 Mechanical suspension (ATW/ADR)
 Pneumatic double line braking system with ALB
 Crank handbrake
 Drawbar hitch: ball type K80
 Drawbar support: hydraulic, straight, folded leg
 12V lighting system with rear electric socket
 Side under-ride guards
 Mechanically lowered ramps
 Support legs in rear of the trailer
 Tie-down rings in the floor: 11 pieces
 Wheel chocks: 2 pieces
 Steel box at front of the trailer for storing broadenings
 Slow-moving vehicle triangle
 Chemically hardened painting

Additional equipment (optional):

Hydraulically driven ramps lowering system
 Braking system: double line pneumatic ALB
 Braking system: single line pneumatic ALB
 Braking system: single line pneumatic with manual braking force regulator
 Braking system: hydraulic with mechanical safety valve
 Braking system: single line hydraulic
 Combined braking system (double line pneumatic+hydraulic)
 Combined braking system (double line pneumatic+hydraulic with mechanical safety valve)
 Combined braking system (double line pneumatic+hydraulic with electric safety valve and braking force regulator)
 Floor: oak 45mm
 Drawbar hitch: rigid Ø40 / rigid Ø50 / rotary Ø50
 Floor enlargings + boards (pine/spruce)
 Hydraulically driven lift
 Spare wheel: 1 or 2 (for one piece)
 Water container (30 l) with soap feeder
 Tool box (~50 l)
 Slow-moving vehicle triangle

PC2100 Standard equipment:

Internal dimensions (length/width/height): 5100x2410x1000
 Floor: 5 mm Hardox
 Sidewalls: 4 mm Domex
 Axles: 2 x 9t (BPW)
 Drum brakes
 Pneumatic braking system with EBS: Knorr-Bremse
 Additional power to the EBS system via „stop“ lights
 Tires 385/65 R22,5 (4 pcs)
 Drawbar hitch Ø50
 Hydraulic tipping system - double line
 Hydraulic feed coupling: 3/4" Hyva
 Hydraulic return coupling: 1" Hyva
 Support leg
 Electric 24V system in accordance with 48 EKG ONZ
 Clearance markings in accordance with 48 EKG ONZ
 Sidewalls manually opened with lever on the front side (right side - raised, left side - raised and side-opened)
 Rear wall raised (opened automatically when tipping)
 Tie-down rings in the floor: 8 pieces
 Side underride guards in accordance with 89/297/EWG
 Plastic mudguards: 4x1
 Mudflaps in accordance with 91/226/EWG
 Bumper in accordance with 2006/20/WE
 2 tipping limiting ropes
 Wheel chocks + racks
 Mechanical support of the loading case - 2 pcs
 Reflection boards
 Chemically hardened painting materials , UV-resistant.
 Ferry shackle: 2 pieces
 Chassis color black RAL9005 PRONAR

Additional equipment (optional):

Pneumatic brakes with EBS: Haldex, Wabco
 Hydraulic couplings feed / return – 1/2" (ISO 7241-1)
 Platform on the front wall
 Spare wheel (1 piece)
 Cover
 Spare wheel winch
 Tool box (~50 l)
 Water container (30 l) with soap feeder
 Chain fastening the middle posts
 Aluminium ladder (length 2m)
 Shovel

PC2100-1 Standard equipment:

Internal dimensions (length/width/height): 5100x2410x1000
 Floor: 4 mm Hardox
 Sidewalls: 3 mm Domex, Domex Wear
 Drum brakes
 Axles: 2 x 9t (BPW)
 Pneumatic braking system with EBS: Knorr-Bremse
 Additional power to the EBS system via „stop“ lights
 Tires 385/65 R22,5 (4 pcs)
 Drawbar hitch Ø50
 Hydraulic tipping system - double line
 Hydraulic feed coupling: 3/4" Hyva
 Hydraulic return coupling: 1" Hyva
 Support leg
 Electric 24V system in accordance with 48 EKG ONZ
 Clearance markings in accordance with 48 EKG ONZ
 Right sidewalls manually opened with lever located on the front wall
 Left sidewall – Hydroboard, opened/closed by hydraulic cylinders
 Rear wall raised (opened automatically when tipping)
 Tie-down rings in the floor: 8 pieces
 Side underride guards in accordance with 89/297/EWG
 Plastic mudguards: 4x1
 Mudflaps according with 91/226/EWG
 Bumper in accordance with 2006/20/WE
 Wheel chocks + racks
 Mechanical support of the loading case
 Reflection boards
 Ferry shackle: 2 pieces
 Chassis color black RAL9005 PRONAR
 Chemically hardened painting materials , UV-resistant.
 2 tipping limiting ropes
 Sidewalls color orange RAL 2008 PRONAR

Additional equipment (optional):

Pneumatic brakes with EBS: Haldex, Wabco
 Hydraulic couplings feed / return – 1/2" (ISO 7241-1)
 Platform on front wall
 Spare wheel (1 piece)
 Spare wheel winch
 Tool box (~50 l)
 Water container (30 l) with soap feeder
 Cover
 Shovel



PC2200 Standard equipment:

Folding, sliding roof, sliding side curtains
 Straining cover system
 Sliding central poles with possibility of disassembly
 Internal dimensions (length/width/height): 7800x2480x2970
 Floor: waterproof, antislip plywood - 27 mm
 Sides and rear tailgate: aluminium - 25 mm
 Front side: aluminium - 25 mm, additional internal reinforcement of front side up to 1000 mm height
 Sides and tailgate height: 600 mm
 Sides opened manually by levers
 Stairs on rear tailgate
 Drum brakes
 Pneumatic suspension 2x9 ton (BPW)
 Pneumatic braking system with EBS: Knorr-Bremse
 Additional power to the EBS system via „stop“ lights
 Tires 265/70 R19,5 (8 pcs)
 Lifting / lowering valve with automatic return to „drive“ position
 Drawbar hitch Ø50
 ±300 mm regulation of drawbar
 Support legs: 3 pcs
 3 levels of wooden planks between poles
 Electric system 24V; accoring with 48 EKG ONZ
 Side under-ride guards in accordance with 89/297/EWG
 Plastic mudguards: 4x1/4
 Mudflaps in accordance with 91/226/EWG
 Bumper in accordance with 2006/20/WE
 Side and rear rubber bumpers
 Loading hitches: 18 pieces
 Tie-down rings in the floor: 4 pieces
 Wheel chocks + racks
 Reflection boards
 Additional canvas cover straining expander
 Chemically hardened painting materials , UV-resistant.

Additional equipment (optional):

Pneumatic brakes with EBS: Haldex, Wabco
 Gullwing steel rear door instead of rearwall and cover
 Spare wheel: 1 or 2 (price of 1 pcs)
 Fasten for spare wheel from truck
 (instead of one spare wheel)
 Tool box (~50 l) 1 or 2 (price for one piece)
 Ladder (in option with two-sided tailgate)
 Tool box (~50 l) 1 or 2 (price of 1 pcs)
 Water container (30 l) with soap feeder
 Customs secure fastening rope

FEED MIXER

VMP-5S Standard equipment:

Chassis frame: rectangular made of closed profiles
 Profiled container with high stiffness
 Drawbar: rigid to couple with lower hitch of the tractor
 Drawbar towing hitch: rotary with Ø50 towing eye
 Drawbar support: mechanical telescopic leg
 Axle without brakes
 Mixer type: 1 vertical snail-type
 4 abrasion-resistant knives
 Changeable cutting edges on the vertical mixer
 Two counterknives manually regulated
 Dosing window hydraulically driven, asymmetrically located
 Metal chute below dosing window
 Tarpaulin cover in dosing window
 Weight system with LCD to control the mixer and the loading weight
 Operator's platform with stairs on the both sides of the vehicle
 Upper protection rim
 Chemically hardened painting materials , UV-resistant.
 PTO shaft to be connected with tractor
 Chute and platform color: red RAL3000 PRONAR
 Chassis and container color: green RAL6010 PRONAR
 Wheel chocks + racks
Additional equipment (optional) :
 Counter knife lever
 Movable upper protection rim
 Spare wheel (separately) 10.0/75-15.3
 Slow-moving vehicle triangle

VMP-10 Standard equipment:

Chassis frame: rectangular made of closed profiles
 Profiled container with high stiffness
 Drawbar: rigid to couple with lower hitch of the tractor
 Drawbar towing hitch: rotary with Ø50 towing eye
 Drawbar support: mechanical telescopic leg
 Braking system: single or double line pneumatic or hydraulic
 Crank handbrake
 Lighting system
 Mixer type: 1 vertical snail-type
 Changeable cutting edges on the vertical mixer:
 3 abrasion-resistant knives made of chrome-vanadium-wolfram placed on the floor
 6 abrasion-resistant knives made of chrome-vanadium placed on the sidewalls
 Cutting edges adjustable in 3 positions
 Two counter-cutters manually regulated
 Two dosing windows hydraulically driven
 Adjustable chutes under the windows
 Rubber guards in dosing windows
 Weight system with LCD to control the mixer and the loading weight
 Operator's platform with stairs on the both sides of the vehicle
 Chemically hardened painting materials , UV-resistant.
 Upper protection rim
 Wheel chocks + racks
 Chute and platform color: red RAL3000 PRONAR
 Chassis and container color: green RAL6010 PRONAR

Additional equipment (optional) :

VMP-10S Standard equipment:

Chassis frame: rectangular made of closed profiles
 Profiled container with high stiffness
 Drawbar: rigid to couple with lower hitch of the tractor
 Drawbar towing hitch: rotary with Ø50 towing eye
 Drawbar support: mechanical telescopic leg
 Braking system: single or double line pneumatic or hydraulic
 Crank handbrake
 Lighting system
 Mixer type: 1 modernized vertical snail-type
 9 abrasion-resistant knives
 Changeable cutting edges on the vertical mixer:
 Cutting edges adjustable in 2 positions
 Two counter-cutters manually regulated
 Mixer drive 540min-1, with reduction gear, number of mixer rotations 33min-1
 Two dosing windows hydraulically driven, asymmetrically located
 Chutes below dosing windows
 Tarpaulin cover in dosing windows
 Weight system with LCD to control the mixer and the loading weight
 Operator's platform with stairs on the both sides of the vehicle
 Chemically hardened painting materials , UV-resistant.
 Upper protection rim
 Chute and platform color: red RAL3000 PRONAR
 Chassis and container color: green RAL6010 PRONAR
 Wheel chocks + racks
Additional equipment (optional) :
 Special snail drive, 540min-1, with II-gear gearbox, snail rpms 33min-1 - on I gear, 17min-1 - on II gear
 Possibility of increase knives up to 11 pieces
 Drawbar towing hitch rigid with towing eye for upper hitch of tractor
 Drawbar towing hitch: rigid with towing eye Ø40
 Without extensions 250mm (decreasing capacity to 8m³)
 Jointed telescopic shaft
 Jointed telescopic shaft with clutch (for II-gear gearbox)
 Spare wheel (separately) 30x11.5-14.5 RE
 Slow-moving vehicle triangle

SLURRY TANK

T314 Standard equipment

Single axle frame structure with tank fixed to the frame,
Closed profile frame,
High performance steel tank,
Annular frame inside of the tank providing peripheral strength,
Tank double welded inside and outside,
Galvanized tank and frame,
Rear 500mm diameter hatch,
MEC 4000 / M compressor with a 4350 L / min maximum output/
Manovacuometer,
Rear 4 ,, hydraulically-controlled latch,
Two extra connectors provided on the right and left side of the car, sealed and prepared for mounting manual latch.
Double protection against compressor flooding with relief valve placed on the top of the tank and with siphon with sight glass and drain valve,
Overpressure safety valve set at 0.5 bar
6m long 4 ,, (Ø110mm) suction hose with strainer,
2 filling rate indicators (specula),
Drain in the lowest point of the tank,
Pneumatic double-line braking system,
Crank handbrake,
Drawbar support: telescopic
50mm rotary towing eye,
12V lighting installation,
Spiral connecting cables
Mudguards,
Mudguards, axle painted green RAL6010
Additional equipment (optional) :
Braking system: single line pneumatic
PTO shaft - standard
PTO shaft - wide angle
Spare wheel
Slow moving vehicle triangle

T315 Standard equipment

Single axle frame structure with tank fixed to the frame,
Closed profile frame,
High performance steel tank,
Annular frame inside of the tank providing peripheral strength,
Tank double welded inside and outside,
Galvanized tank and frame,
Rear 500mm diameter hatch,
MEC 5000 / M compressor with a 6150 L / min maximum output/
Manovacuometer,
Rear 4 ,, hydraulically-controlled latch,
Two extra connectors provided on the right and left side of the car, sealed and prepared for mounting manual latch.
Double protection against compressor flooding with relief valve placed on the top of the tank and with siphon with sight glass and drain valve,
Overpressure safety valve set at 0.5 bar
6m long 4 ,, (Ø110mm) suction hose with strainer,
2 filling rate indicators (specula),
Drain in the lowest point of the tank,
Pneumatic double-line braking system,
Crank handbrake,
Drawbar support: telescopic
50mm rotary towing eye,
12V lighting installation,
Spiral connecting cables
Mudguards,
Mudguards, axle painted green RAL6010
Additional equipment (optional) :
Braking system: single line pneumatic
PTO shaft - standard
PTO shaft - wide angle
Spare wheel
Slow moving vehicle triangle

T316 Standard equipment

Single axle frame structure with tank fixed to the frame,
Closed profile frame,
High performance steel tank,
Annular frame inside of the tank providing peripheral strength,
Tank double welded inside and outside,
Galvanized tank and frame,
Rear 500mm diameter hatch,
MEC 5000 / M compressor with a 6150 L / min maximum output/
Manovacuometer,
Rear 4 ,, hydraulically-controlled latch,
Two extra connectors provided on the right and left side of the car, sealed and prepared for mounting manual latch.
Double protection against compressor flooding with relief valve placed on the top of the tank and with siphon with sight glass and drain valve,
Overpressure safety valve set at 0.5 bar
6m long 4 ,, (Ø110mm) suction hose with strainer,
2 filling rate indicators (specula),
Drain in the lowest point of the tank,
Pneumatic double-line braking system,
Crank handbrake,
Drawbar support: telescopic
50mm rotary towing eye,
12V lighting installation,
Spiral connecting cables
Mudguards,
Mudguards, axle painted green RAL6010
Inner wall preventing slurry displacement inside the tank
Additional equipment (optional) :
Braking system: single line pneumatic
PTO shaft - standard
PTO shaft - wide angle
Spare wheel
Slow moving vehicle triangle
Braking system: hydraulic

Notes:

Technical data included in the catalog refer to different equipment specification in version containing standard and optional features. Due to the continuous process of product improvement, data is subject to change. The manufacturer reserves the right to introduce specification changes without prior notice. This publication does not constitute an offer within the meaning of the Civil Code.

www.pronar.pl

DEALER:



Pronar Sp. z o.o. 17-210 Narew, ul. Mickiewicza 101A, tel./fax: +48 85/681 63 29, 681 64 29, fax: +48 85/681 63 83