

MULTIFUNCTION ARM FOR TRUCKS
WWP500U / WWP500UH



MULTIFUNCTION ARM	WWP500U	WWP500UH	
Horizontal range (measured to centre of connection)	4750	4750	[mm]
Horizontal range (measured with GK110 head)	5500	55000	[mm]
Vertical range (measured with GK110 head)	6100	6100	[mm]
Weight	750	680 / 1080	[kg]
Control: Joystick mounted in truck cab	electric, 12 or 24	24	[V]

WWP500U multifunction arm with GK10 mowing head on Unimog U500

Mowing of a hard-to-reach roadside using a WWP500U multifunction arm and GK 110 head.

Mowing of a hard-to-reach roadside using a WWP500U multifunction arm and GK 110 head.



MOWING HEADS
GK110 - 140 / 100L - 140L



MOWING HEAD	GK100L	GK120L	GK140L	GK110	GK140	
Working width	1000	1200	1400	1100	1400	[mm]
Working shaft diameter	76	89	89	133	133	[mm]
Copying shaft diameter	89	101,6	101,6	133	133	[mm]
Hydraulic engine power	38 (28)	38 (28)	38 (28)	48 (35)	48 (35)	[HP (kW)]
Connector size	60x60	60x60	60x60	80x80	80x80	[mm]
Weight	155	185	240	290	318	[kg]
Number of knives	24	26	30	10	12	[pcs]
Oil flow	80	80	80	90	90	[l/min]
Oil pressure	21	21	21	25	25	[MPa]



SPECIALIZED HEADS
GO800 / GM500 / GT150 / GN200 / GP200



GO800



GM500



GT150



DITCH DIGGER GO800

Working disc diameter	800	[mm]
Min oil working pressure	22	[MPa]
Min. oil flow	90	[l/min]
Hydraulic motor power	48 (35)	[HP(kW)]
Weight	220	[kg]
Adjustable discharge direction	+	

Requires carrier with creeper drive

CLEANING HEAD GM500

Brush diameter	400	[mm]
Brush length	500	[mm]
Nom. oil working pressure	10	[MPa]
Min. oil flow	80	[l/min]
Water pump efficiency	80	[l/min]

Easy disassembly of protective frame for the purpose of washing road signs

TRIMMER GT150

Working width	1500	[mm]
No. of cutting knives	20	[pcs.]
Max. cutting diameter	20	[mm]
Min oil working pressure	12	[MPa]
Min. oil flow	50	[l/min]
Weight	50	[kg]
Connector	140x140	[mm] plate

GN200



GP200



TRIMMER HEAD GN200

Working width	2000	[mm]
No. of cutting knives	14	[pcs.]
Max. cutting diameter	100	[mm]
Min oil working pressure	12	[MPa]
Min. oil flow	80	[l/min]
Weight	250	[kg]
Connector	140x140	[mm]

BRANCH CUTTER GP200

Working width	2000	[mm]
Number of cutting discs	4	[pcs.]
Disc diameter	600	[mm]
Min oil working pressure	22	[MPa]
Min. oil flow	60	[l/min]
Weight	232	[kg]
Connector	80x80	beam [mm]

PRONAR Sp. z o.o.
17-210 Narew, Poland
ul. Mickiewicza 101A

tel.: +48 85 682 72 16
+48 85 682 72 65
fax: +48 85 682 71 91

pronar.pl
municipal.export@pronar.pl



Technology for nature

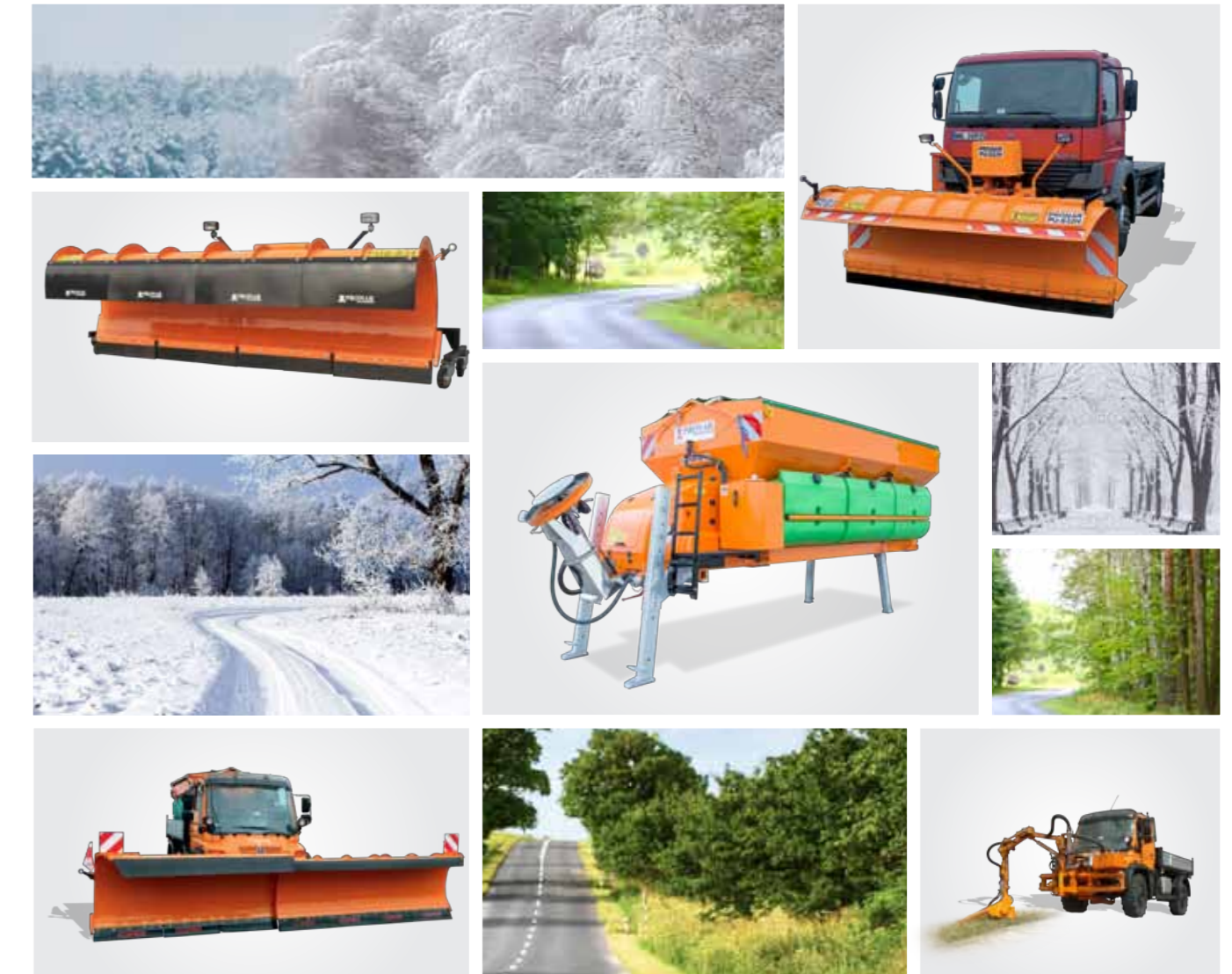


MUNICIPAL EQUIPMENT FOR TRUCKS

SNOW PLOWS

SALT SPREADERS

MULTIFUNCTIONAL ARMS



TRUCK SNOW PLOW
PU S25H – PU S35H



PU-S25H, S32H, S35H

TRUCK SNOW PLOUGHS	PU-S25H	PU-S32H	PU-S35H	
Working width with bumper - straight	2690	3370	3634	[mm]
- at max. turn angle	2550	3175	3415	
Max. frame turn angle	30	30	30	[±°]
Working height	930	1070	1070	[mm]
Electric supply	12 or 24	12 or 24	12 or 24	[V]
Carrier payload (vehicle truck)	6	8	8	[t]
Weight	335 – 380	600 – 650	650 – 710	[kg]
Mounting on DIN plate std 76060	type B	type A	type A	



PU S25H snowplow with EPT 15 salt spreader on a hooklift frame

SEGMENTED SNOW PLOW
PUS-S27 / S32 / S34 / S36 / S40



PUS-S27, S32, S34, S36, S40



SEGMENTED SNOW PLOW	PUS-S27	PUS-S32	PUS-S34	PUS-S36	PUS-S40	
Working width - straight	2700	3200	3420	3600	4020	[mm]
- at max. turn angle	2350	2790	2960	3135	3490	
Max. mouldboard turn angle	30	30	30	30	30	[±°]
Working weight	1040	1040	1040	1040	1040	[mm]
Electric supply	24	24	24	24	24	[V]
Weight	930	1030	1050	1100	1200	[kg]
Working speed max.	60	60	60	60	60	[kph]
Linkage	type A, type B, Setra	type A, type B, Setra	type A, type B, Setra	type A, type B, Setra	type A, type B, Setra	

TRUCK SALT SPREADER
EPT15 / 21



EPT15



EPT21



TRUCK SALT SPREADER	EPT15	EPT21	
Weight	340	385	[kg]
Spreader capacity	1,5	2,1	[m³]
Electric supplying	12 or 24	24	[V]
Spreading width	adjustable 2 – 4	adjustable 2 – 4	[m]
Aggregate spreading intensity	adjustable 50 – 150	adjustable 50 – 150	[g/m²]
Working speed max.	40	40	[kph]



TRUCK SNOW PLOW
PU-S25HL / 27HL / 30HL / 34HL



PU-S25HL, 27HL, 30HL, 34HL

TRUCK SNOW PLOW	PU-S25HL	PU-S27HL	PU-S30HL	PU-S34HL	
Working width with bumper - straight	2690	2945	3235	3630	[mm]
- at max. turn angle	2350	2570	2825	3160	
Max. frame turn angle	30	30	30	30	[±°]
Working height	930	1060	1060	1060	[mm]
Electric supply	12 or 24	12 or 24	12 or 24	12 or 24	[V]
Carrier payload (vehicle truck)	6	8	8	8	[t]
Weight	450	530	550	590	[kg]
Mounting on DIN plate std 76060	type A or B	type A or B	type A or B	type A or B	

TRUCK SNOW PLOW
PUB S33 / PUL-S45 / PUT S58



PUB-S33



PUL-S45



PUT-S58



SIDE SNOW PLOW	PUB-S33	TILTABLE SNOW PLOW	PUL-S45
Working width	2340 [mm]	Working width with max. turn	3930 [mm]
Max. blade turn angle	0 - 45 [°]	Max. turning angle	30 [°]
Working speed max.	60 [kph]	Max. working speed	60 [km/h]
Working height	1400 [mm]	Max. working height	1090 [mm]
Weight	850 [kg]	Weight	1280 [kg]
Mounting on dedicated linkage		Mounting on municipal plate:	DIN A, B, Setra

TELESCOPIC TRUCK SNOW PLOW	PUT-S58	
Working width (folded/unfolded?) - straight	3900 / 5855	[mm]
- at max. turn angle	3455 / 5150	
Max. mouldboard turn angle	30	[±°]
Working height	1090	[mm]
Electric supply	24	[V]
Carrier payload (vehicle truck)	8	[t]
Weight	1760	[kg]
Mounting on DIN plate std 76060	type A	

TRUCK SALT SPREADER
HPT 25, PT40 & PT 70 series



HPT25



PT40 SERIES



SPT70



TRUCK SALT SPREADER	HPT25	KPT40 / HPT40 / SPT40	HPT70 / SPT70	
Brine tank capacity	900	1800	2700	[l]
Spreader capacity	2,5	adjustable from 4,5 to 6	7, 8 or 9	[m³]
Salt spreading intensity	adjustable 5 – 40	adjustable 5 – 40	adjustable 5 – 40	[g/m²]
Aggregate spreading intensity	adjustable 50 – 200	adjustable 50 – 200	adjustable 50 – 200	[g/m²]
Working speed	10 – 70	10 – 70	10 – 70	[kph]

Available drives for PT series are hydraulic drive, auxiliary diesel engine or 5th wheel drive